

20000mm SSTT Lattice Tower by Alan Dick.

HEADFRAME DETAILS

120505

ROCHFORD DC APPROVED PLAN

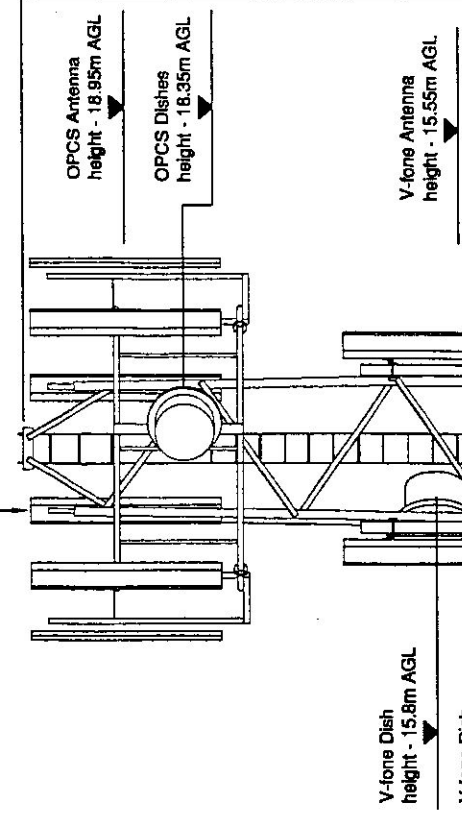
SOUTH EAST ELEVATION  
SCALE (1:75)

SITE NUMBER:  
ESX0313/03

OPCS REF: U99285472  
VODAFONE REF: 46893

|                     |   |
|---------------------|---|
| Tower Details:      |   |
| Code: TT            | Tower Description: SSTT Lattice   |
| Height: (15m) 20m   | Colour Ref: N/A   |
| Custom: Yes         | Custom Comment: Steelwork required for shaver's equipment. Tower to be increased to 20m. Subject to GDC UK521-208 (55-486) being revised to reflect drawings. |
| Tower Supplier: ADC |   |

Ex. 6No. DBPP antennas & Ex. 4No. 600Ø dishes mounted on Ex. headframe raised by 5m with 12No. MHA's fixed to poles behind antennas.



New V-fone 600Ø D1 & D2 Dishes bearing @ 0° & 180°

New V-fone 3No. 3G CSA (305-390) antennas on new leg mounts by ADC.

Ex. 15mm SSTT lattice tower to be increased to 20m by ADC on existing 4750mm Sq. x 1350mm deep reinforced concrete base.

Ex. OPCS feeder brackets on North West tower leg to be extended by 5m.

New V-fone 300mm cable ladder mounted vertically on 2No. 114.3Ø CHS support poles with 1No. full length riser.

New V-fone 1No. 3101 equipment cabinet's (cabinet with sledge 1300 x 925 x 1950mm high) on new concrete base 1815 x 900 x 300dp.

Ex. anti climb guard.

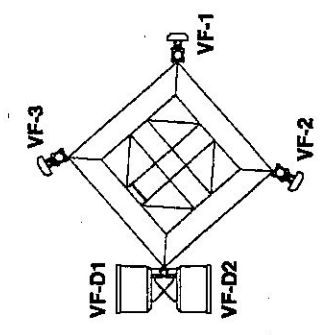
Ex. 500 wide cable ladder gantry mounted on 5No. support poles.

Ex. OPCS 10-pack of cabinets on a Ex. 3800 x 5820mm concrete base.

Ex. OPCS 17m x 17m compound using Dirickx fencing (1.8m high).

New V-fone high security electricity meter cabinet on concrete base.

Ex. OPCS 3G 3-Phase electricity meter cabinet on Ex. concrete base (behind).



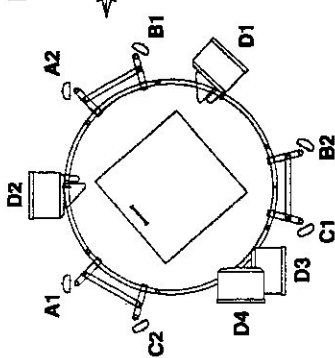
VODAFONE HEADFRAME PLAN  
SCALE (1:100)

VODAFONE EQUIPMENT @ 15.55m AGL:-  
New 3No. 3G CSA (305-390) ANTENNAS  
VF-1 @ 90°  
VF-2 @ 210°  
VF-3 @ 330°

3No. MHA's REQ'D  
6No. FEEDERS REQ'D.  
MAX FEEDER LENGTH 25m  
MAX FEEDER SIZE LDF 5/60  
MIN RADIUS 250

2No. 600Ø DISHES:-  
VF-D1 @ 0° @ 15.8m AGL  
VF-D2 @ 180° @ 15.1m AGL

OPCS EQUIPMENT @ GROUND LEVEL :-  
1No. RBS 3101 Cabinet



OPCS HEADFRAME PLAN  
SCALE (1:100)

OPCS EQUIPMENT @ 18.95m AGL:-  
Ex. 6No. DBPP ANTENNAS  
A1 & A2 @ 0°  
B1 & B2 @ 120°  
C1 & C2 @ 240°

12No. MHA'S REQ'D  
12No. FEEDERS REQ'D.  
MAX FEEDER LENGTH 35m  
MAX FEEDER SIZE LDF 5/60  
MIN RADIUS 250

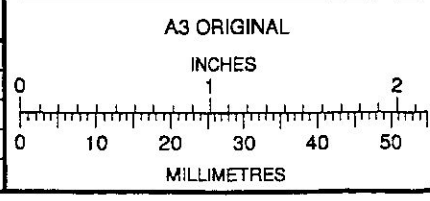
4No. 600Ø DISHES:-  
D1 @ 133.5° @ 18.35m AGL  
D2 @ 0° @ 18.35m AGL  
D3 @ 180° @ 18.35m AGL  
D4 @ 270° @ 18.35m AGL

OPCS EQUIPMENT @ GROUND LEVEL :-  
2No. SSU, 1No. Nobe B, 2No. Ultra Site,  
2No. Tx, 1No. P & R

**PTA TELECOM LIMITED**  
SEYMOUR HOUSE  
WHITELEAF ROAD  
HEMEL HEMPSTEAD  
HERTFORDSHIRE, HP3 9DE  
TEL: 01442 838480  
FAX: 01442 838490  
E-MAIL: central@ptatelecom.co.uk

COMMERCIAL IN CONFIDENCE

|                                |               |         |
|--------------------------------|---------------|---------|
| RELEVANT BS STANDARDS          | BS 308        | BS 3429 |
| DO NOT SCALE FROM THIS DRAWING |               |         |
| PTA TELECOM DRAWING NUMBER     | 4714/1322/03  |         |
| ORANGE CELL NUMBER             | ESX0313       |         |
| DRAWING LOCATION               | F/4714/1300's |         |



| ISS   | DESCRIPTION                | BY       | DATE    | CHKD  |
|-------|----------------------------|----------|---------|-------|
| B     | VODAFONE EQUIPMENT REVISED | BB       | 17.3.5  |       |
| A     | VODAFONE SITE SHARE ADDED. | AJM      | 02/05   |       |
| SCALE |                            |          |         |       |
| RTD   | DRAWN                      | AJM      | CHECKED | BB    |
|       | DATE                       | 01/02/06 | DATE    | 4.3.5 |
|       | APPROVED                   | BB       | DATE    | 4.3.5 |

TITLE  
EXISTING PCN INSTALLATION  
WOODS TIMBER LODGE  
SANDY LODGE, HAMBRO HILL,  
RAYLEIGH, ESSEX, SS6 8DF

DRAWING NUMBER  
30/ESX0313/03

CLIENT:

St. James Court  
Great Park Road  
Almondsbury  
Bristol  
BS12 4QJ  
Tel 01454 624600  
Fax 01454 618501