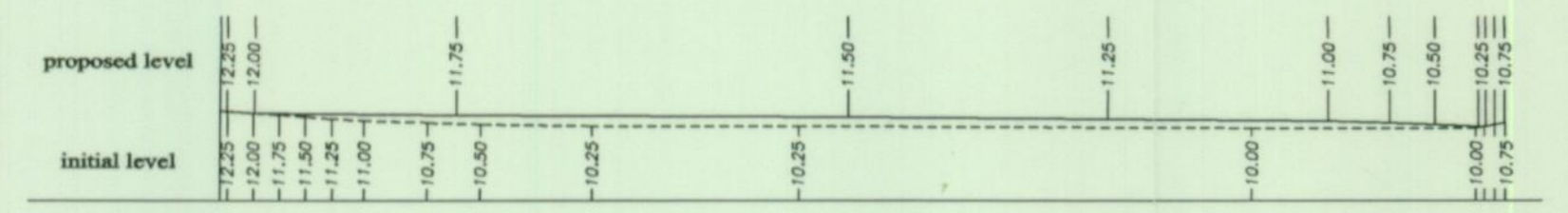
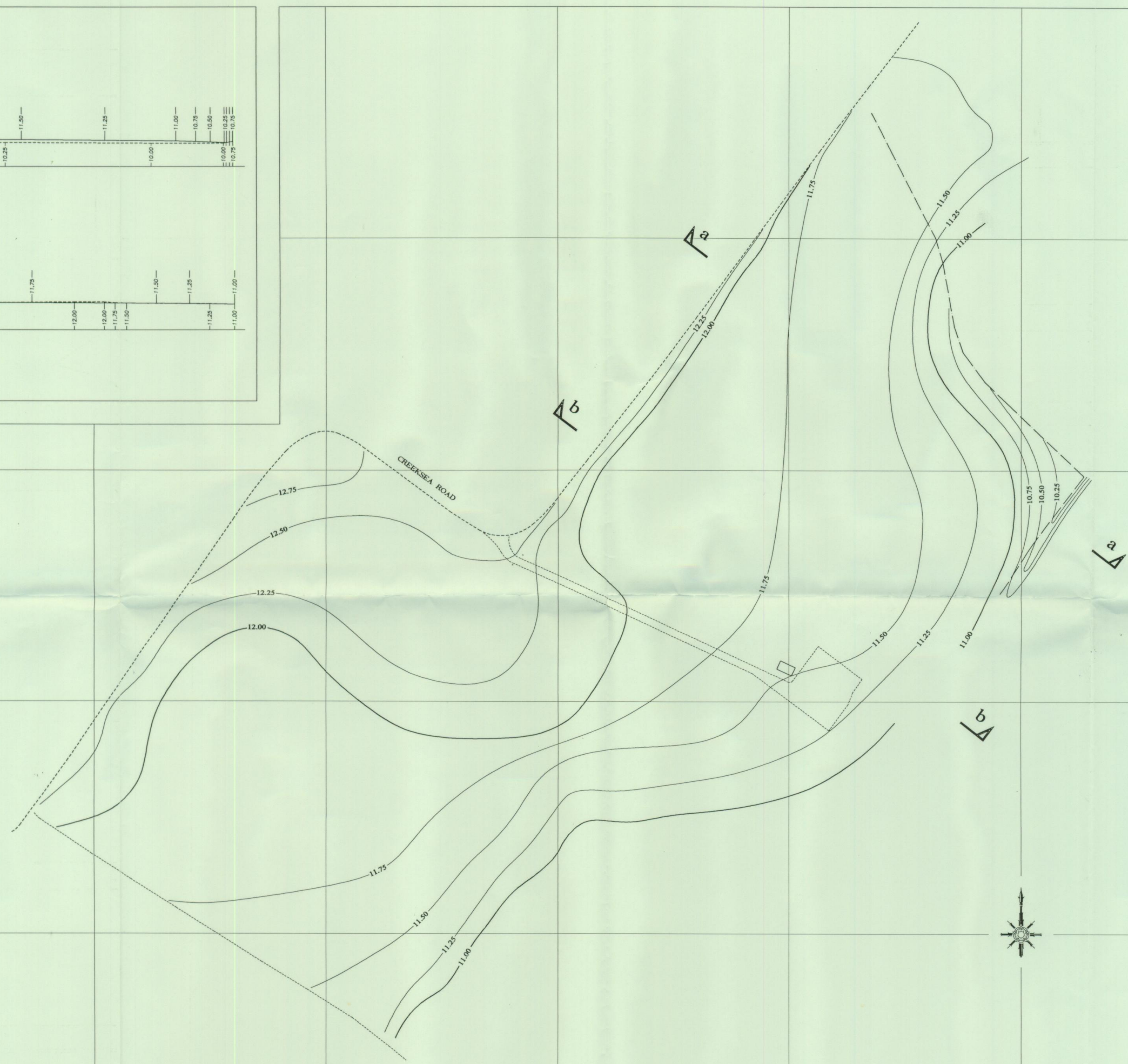
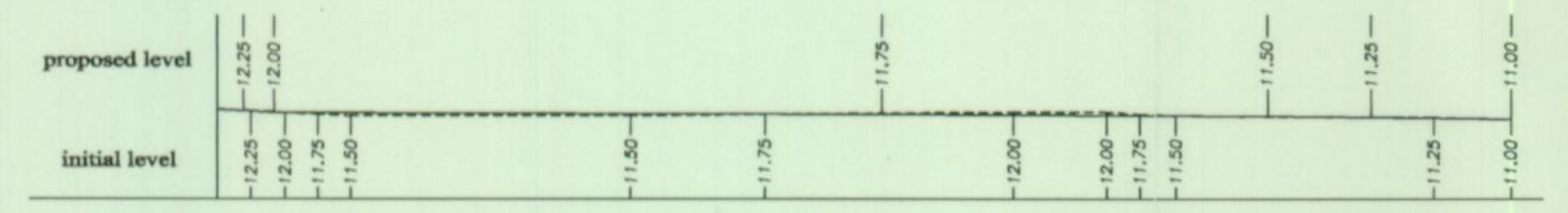


Section a-a



Section b-b



ABBREVIATIONS

BT	bitton basin cover
CTV	concrete T.V.
E	excavation cover
EP/TP	excavation/basin pole
FH	fire hydrant
G	open grate gully
GS	gas valve
IC	inspection cover
LC	lamp column
MH	manhole
TL	traffic light
W	water valve

LINETYPES

---	solid vertical line
-.-.-	edge of kerb, end stop
---	edge of kerb
---	bottom of bank
---	transition between surfaces, e.g. edge of path
---	boundary or line of fence posts
---	hedge
---	top of bank line
---	surface water sewer
---	foot sewer
---	g/hand wire

GENERAL NOTES

Digital survey information - all detail obtained is subject to the accuracy of the equipment used and interpretation of the survey by the surveyor. Accuracy is therefore NOT guaranteed and can be considered suitable for an intended purpose only.

Contours shown are ready visible on site. GPS Survey line is responsibility for accuracy of detail which may be buried or otherwise inaccessible at the time of survey.

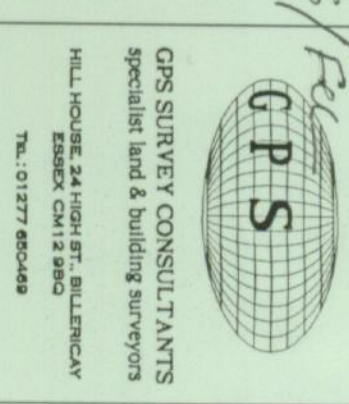
Survey detail (where shown) is obtained from visual inspection of the ground and is not a substitute for a detailed survey or soil water services prior to final design stage. GPS Survey line is not authorized to raise cover situated in main drainage or sewerage service properties.

ROCHFORD D.G.
 APPROVED PLAN

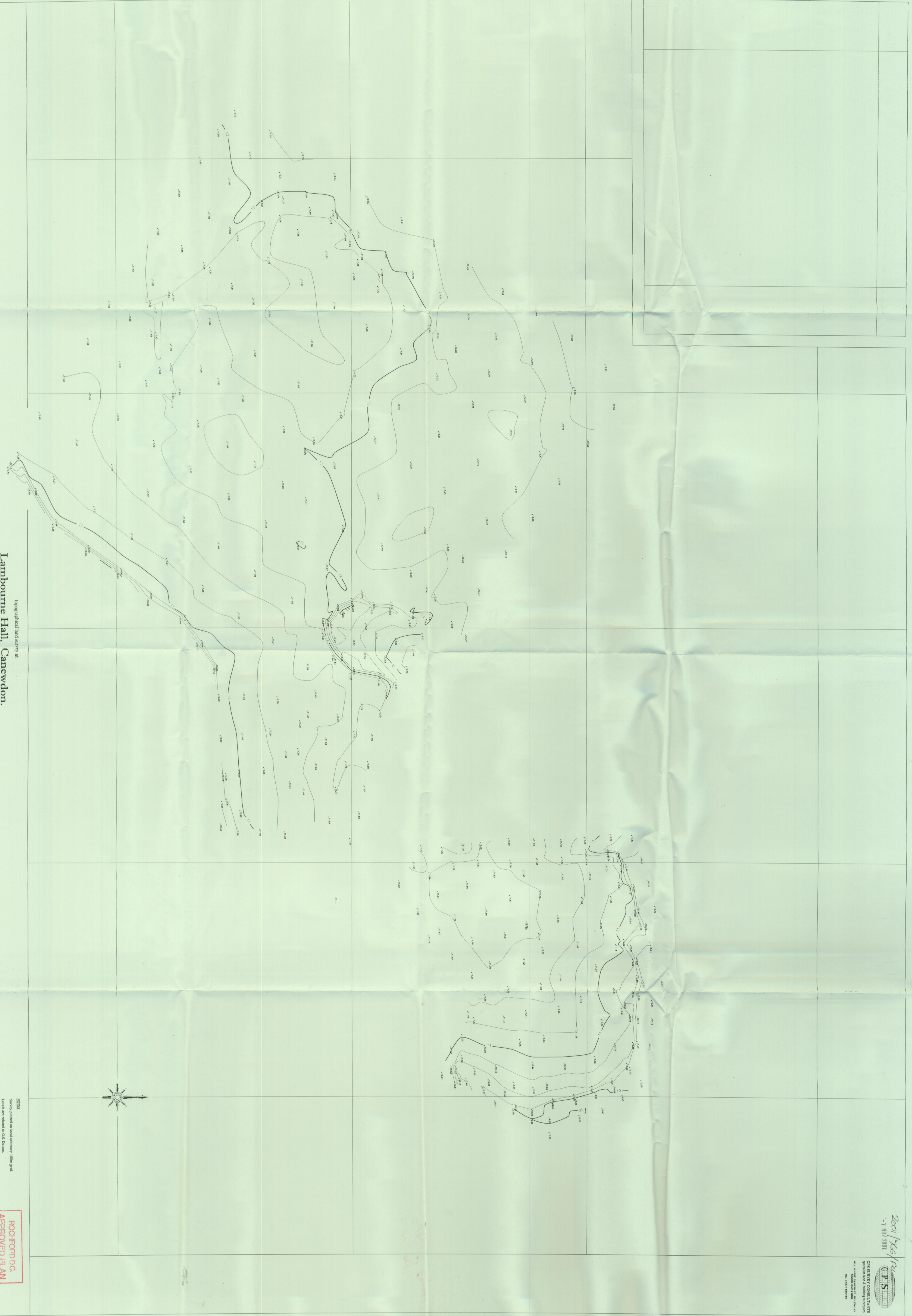
topographical land survey at
Lambourne Hall, Canewdon.
Landfill Record - Proposed finished contour plan

scale 1/1000
 date OCT 01
 project no. 01060
 dwg. no. A1-01
 file name 01060-P

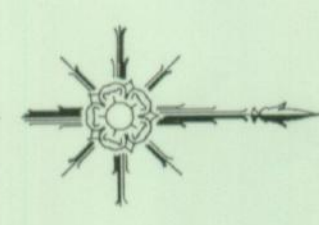
2001/126/PL
-1 NOV 2001



G.P.S. CONSULTANTS
Specialty and Building Surveying
1000 East 10th Avenue, Suite 100
Denver, Colorado 80202
Tel: 303.733.8000



topographical land survey of
Lambourne Hall, Canewdon.
Landfill Record - August 2001



NOTES
Survey plotted on local arbitrary datum grid.
Levels are related to O.S. Datum.
Scale 1/500 Date AUG 01 Project No. O1060

ROCHFORD D.C.
APPROVED PLAN

