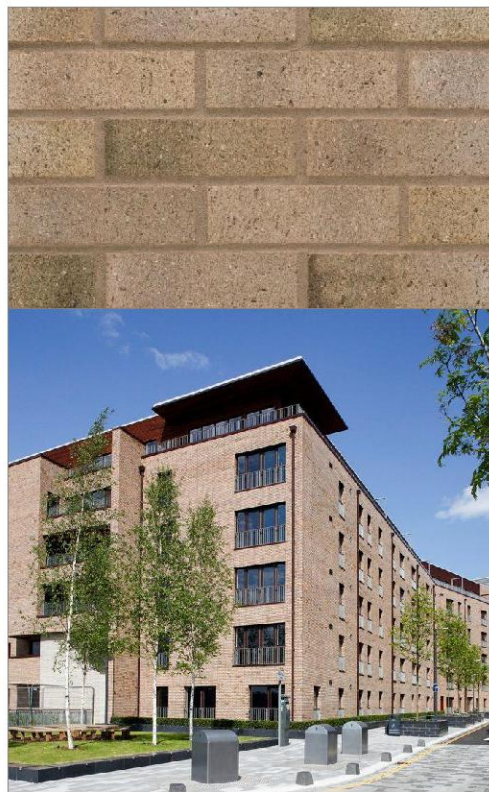


BRK BRICK or BRICK SLIPS
IN LIGHT SAND COLOUR
to match proposed Building 'C'
like: Wienerberger Terca
Rothesay Blend or similar

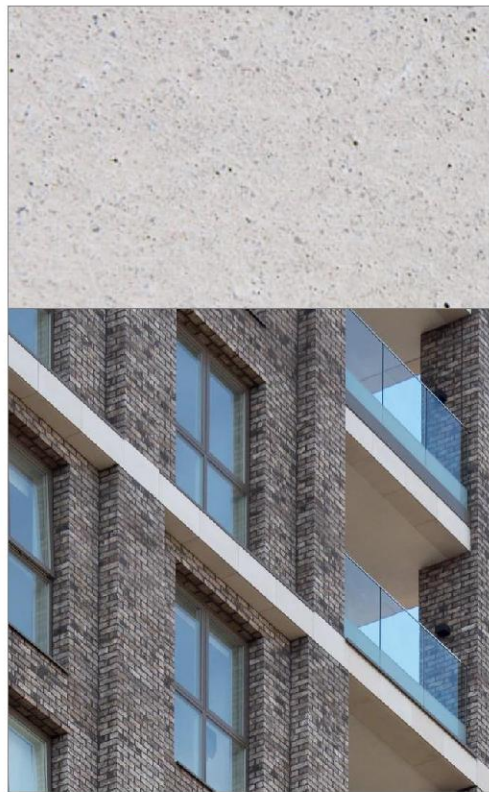


RDR RENDER (window and door heads)
- COLOUR TO MATCH BRICK
like: StoSilco®R genuine silicone
resin render - Y106515 or similar



Y106515 ■ 34 C2 ○ △ Xb30

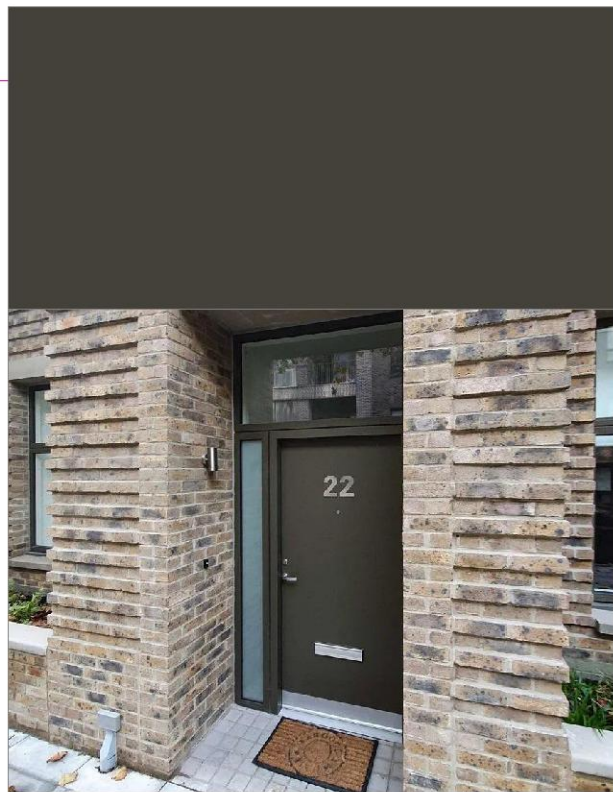
STN STONE LOOK CLADDING
like: Taylor Maxwell Cast Stone
501017 or similar



CLA DARK GREYISH/BROWNISH CLADDING
to match proposed Building 'C'
like: Wienerberger Keymer premium clay
roof tiles or similar



D/W DOORS/WINDOWS WITH DARK GREY FRAMES
frame colour: RAL 7013 or similar



see floor plans for the below symbol
DOMUS QUARTER stone
effect external porcelain
tile /or similar look/



see floor plans for the below symbol
MARSHALLS PRIORA - BURNT
OCHRE 200x100x600mm
herringbone permeable paving /
or similar look/



see floor plans for the below symbol
TARMAC
ULTIPOROUS
fast-draining porous asphalt



see floor plans for the below symbol
WIENERBERGER
AQUATA BLACK
200x65x80 mm permeable
clay paver /or similar look/



A9 ARCHITECTS
9 Fishers Lane - Chiswick - London W4 1RX
255 London Road - Hadleigh - Essex SS7 2BN
(t) 020 7470 9299 (e) info@a9architects.com
www.a9architects.com

PROJECT ADDRESS
Foundry Business Park, Station Approach, Hockley, SS5 4HS
PROJECT DESCRIPTION
The Foundry Business Park Development BUILDING 'A'

CLIENT
GOVEY HOMES LTD
STATUS
PLANNING STAGE

DRAWING TITLE
MATERIALS SCHEDULE Building and Landscaping Materials

DRAWN	CHECKED	DATE	SCALE
AD, PK	AD, AG	12.12.2024	@A2
JOB No.	DRAWING NUMBER	REVISION	
844	MA01	Rev1	

ALL RIGHTS RESERVED.
A9 ARCHITECTS LTD. 2024

ALL RIGHTS RESERVED.
A9 ARCHITECTS LTD. 2024