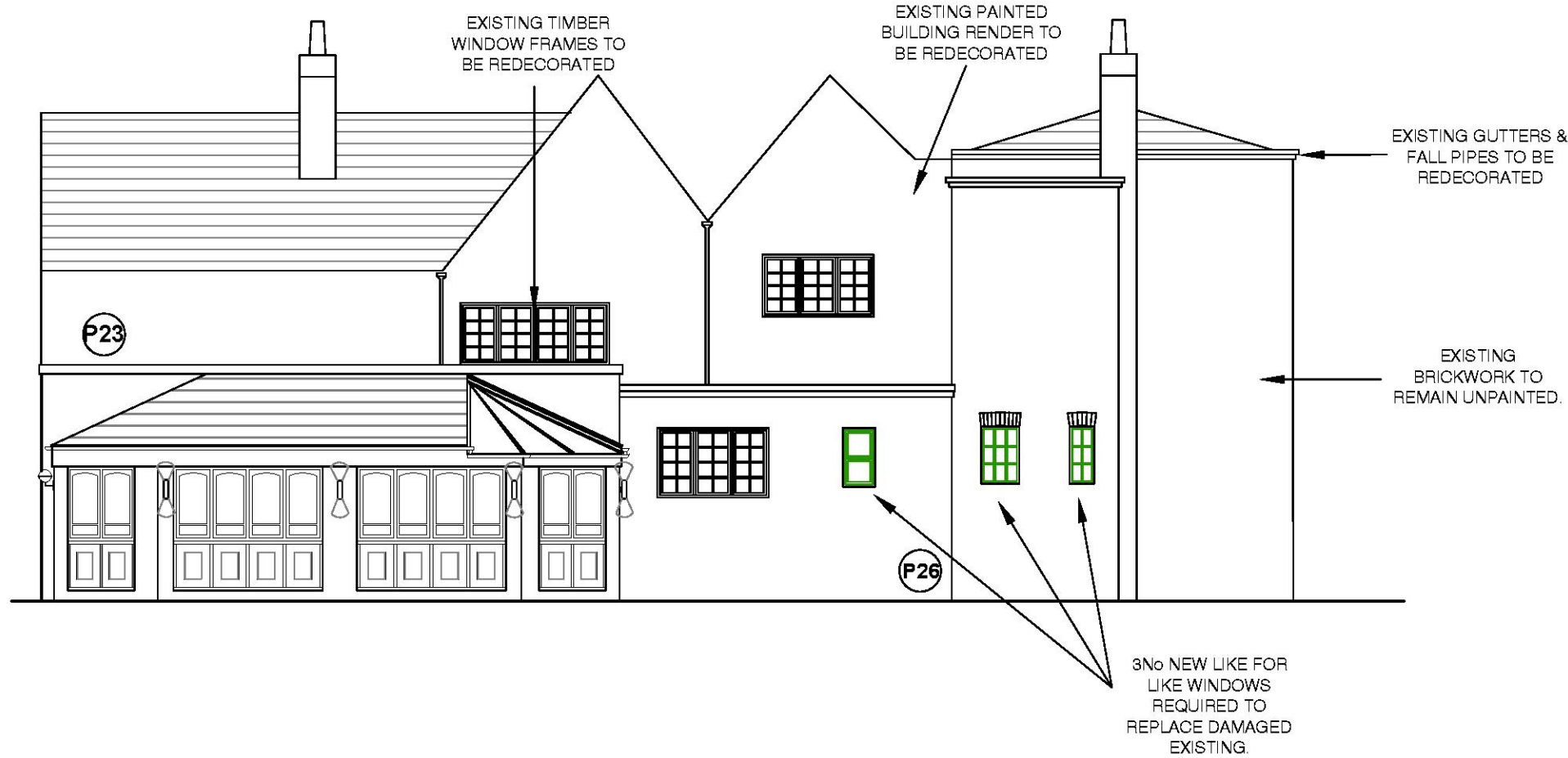


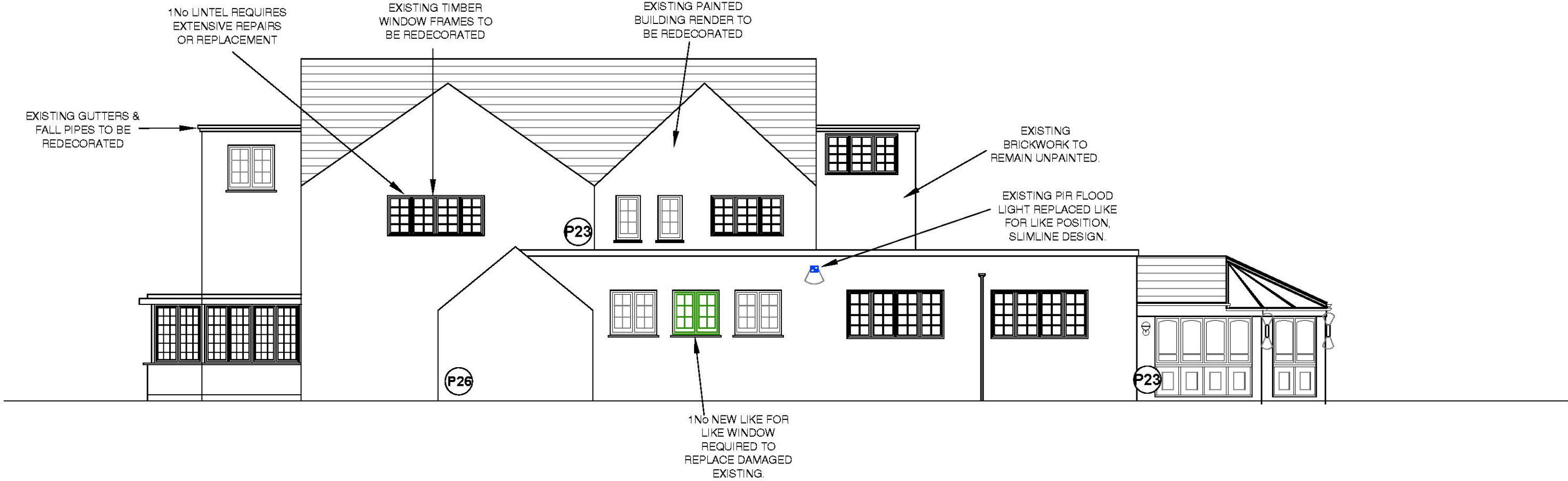
PROPOSED DECORATIONS COLOURS;
*NOTE Colours/Use indicated on elevations is typical, minor adjustment to the colour range below may be required

P16 DULUX HERITAGE RAVENS FLIGHT - (Dulux Trade Weathershield Exterior Flexible Undercoat & Dulux Trade Weathershield Exterior High Gloss).
P18 DULUX 30BB 10/019 - (Dulux Trade Weathershield Exterior Flexible Undercoat & Dulux Trade Weathershield Exterior High Gloss).
P19 DULUX 29GY 10/029 - (Dulux Trade Weathershield Exterior Flexible Undercoat & Dulux Trade Weathershield Exterior High Gloss).
P23 DULUX HERITGE WAXED KHAKI - (Dulux Trade Weathershield Exterior Flexible Undercoat & Dulux Trade Weathershield Exterior High Gloss).
P26 DULUX 64YY 65/071 - (Dulux Trade Weathershield Exterior Flexible Undercoat & Dulux Trade Weathershield Exterior Smooth Masonry).

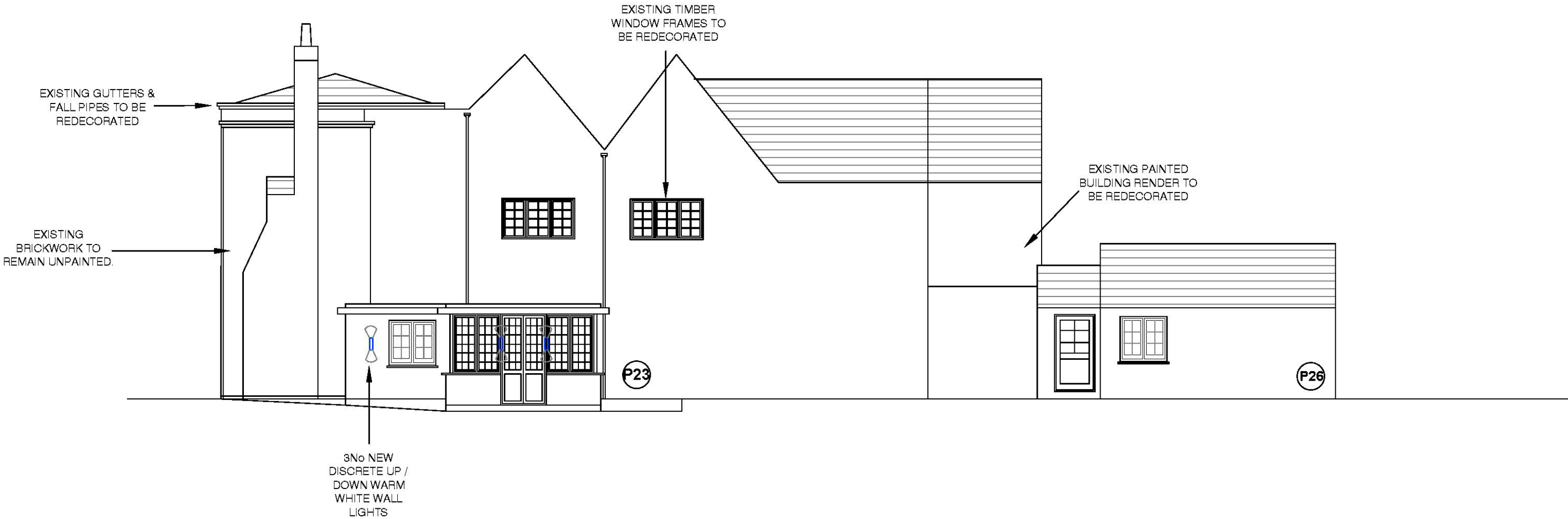
NORTH ELEVATION



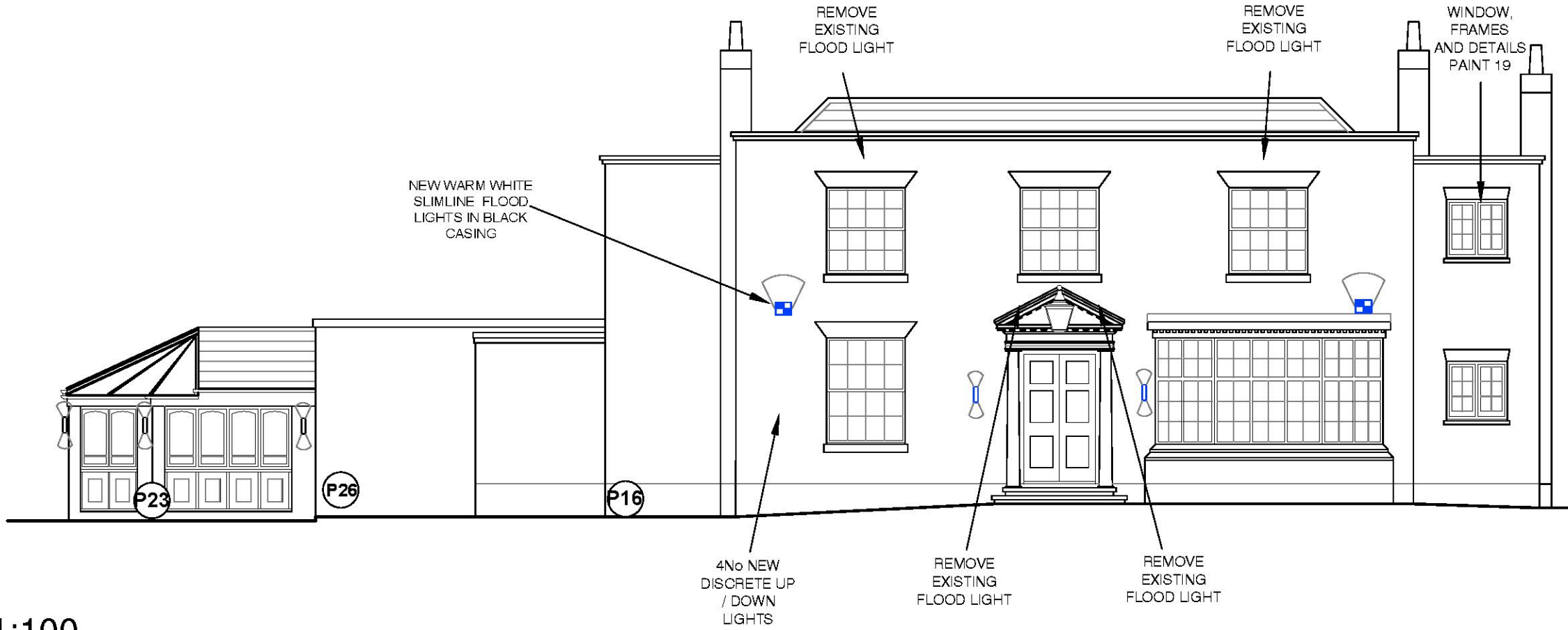
EAST ELEVATION



SOUTH ELEVATION



WEST ELEVATION



SITE - EXTERNAL DECORATIONS COLOUR SCHEDULE: FULL BUILDING DECORATIONS REQUIRED & ACCESSORY ITEMS. DECORATIONS TO EXISTING PAINTED SURFACES ONLY REMOVAL OF ANY REDUNDANT WIRING, BRACKETS, SIGNAGE ETC.	
AREA	SITE SPECIFIC COLOUR
GENERAL: UNPAINTED MASONRY/BRICKWORK (GENERAL).	RETAIN AS EXTG
GENERAL: RENDERED	DULUX HERITGE WAXED KHAKI / DULUX 64YY 65/071
GENERAL: WINDOW FRAMES/ DOORS.	DULUX 29GY 10/029
GENERAL: PERIMETER PLINTH	DULUX HERITAGE RAVENS FLIGHT
GENERAL: GUTTERS: FALL PIPES SOFFITS FASCIA	DULUX HERITAGE RAVENS FLIGHT
MAIN ENTRANCE DOOR/ FRAME & CANOPY FASCIA & INFILL.	DULUX 30BB 10/019
MAIN ENTRANCE PORTICO DETAILS AND COLUMNS	DULUX HERITAGE RAVENS FLIGHT
SITE DECORATIONS ASSOCIATED GATEPOST RAILINGS POST SIGN CLADDING	DULUX HERITAGE RAVENS FLIGHT
SITE DECORATIONS SIGNAGE FRAMES	BLACK
SITE DECORATIONS WHITE LINING & STEP NOSING	WHITE ONLY

© copyright <small>This drawing is the copyright of ABA architecture and interiors limited. Copyright is reserved by them and the drawing is issued on condition that it is not copied, reproduced, retained or disclosed to any unauthorised persons, either wholly or in part, without the written consent of ABA architecture and interiors limited. This drawing has been prepared for presentation purposes only. Consultants wishing to use the drawing for guidance must check all dimensions on site prior to finalising their element of work to be undertaken. NOTE: Full survey not carried out - drawings and details produced from information provided by others and all are responsible for checking dimensions etc.</small>		
REV:	DATE:	BY: COMMENT:
A	14 Jun 2024	HT Revisions include: <ul style="list-style-type: none">- Amendment to front elevation lighting scheme to suit advertisement application- Drawing status amended to 'PLANNING'- Drawing number amended to match the file name.

EXTERNAL LIGHTING KEY: As indicated on layout all items to be provided by electrician - discuss any queries with designer.		
	5x	External Floodlight
	5x	NEW Up/Down Light
	5x	EXTG Up/Down Light
ALL FITTINGS TO BE REPLACED WITH NEW UNLESS SPECIFIED OTHERWISE. REFER TO SPECIFICATION SHEETS FOR INFORMATION.		

aba
architecture and interiors
globe works, kelham island, sheffield, s6 3ae 0114 201 5023
www.abaarchitecture.co.uk

CLIENT:	MAB - EMBER INNS FY24 REMODEL	
PROJECT:	RAYLEIGH LODGE	BUN: 212865
	70 THE CHASE	
	RAYLEIGH	
	ESSEX	
	SS6 8RW	
TITLE:	PROPOSED SITE ELEVATIONS	
INITIALS:	LR	DATE: MAR 24 SCALE: 1:100 (A1)
NUMBER:	2537-204	REV: A STATUS: PLANNING