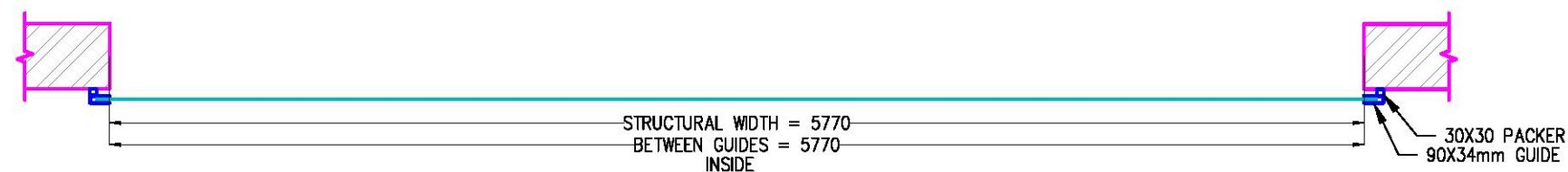
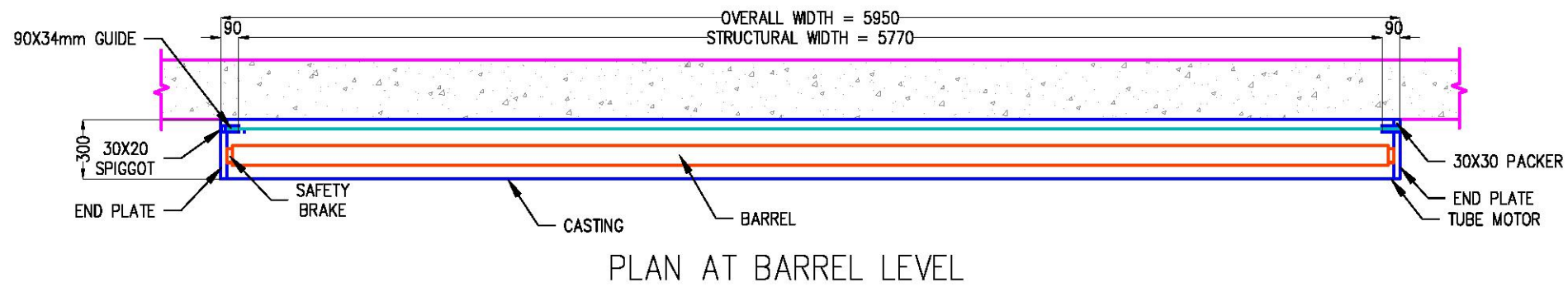


This drawing is supplied as a General Layout showing relative positions of main components and Guardian Industrial Doors Ltd accepts no responsibility for accuracy until a site survey has been undertaken.

If the End Plates and Barrel are within a False Ceiling or Soffit a Full width Access Panel is required (by others)



FIXING TO: -	
STEEL	M8/M10 SET SCREWS
BRICK	M8/M10 RAWBOLTS/SLEEVE ANCHORS
BLOCKWORK	M8/M10 RAWBOLTS/SLEEVE ANCHORS
TIMBER	M8/M10 COACH SCREWS
CONCRETE	M8/M10 RAWBOLTS

The client is responsible for making sure that the structure is capable of withstanding the weight of the shutter and suitable fixing points are available for the end plate and guide support channel

The chart below shows the weight for a shutter with maximum structural clear opening of 5770mmw x 2175mmh.

	WEIGHTS (KG)
BARREL	53
CURTAIN	152
END PLATES	6
GUIDES	20
ANGLES/CHANNELS	0
MOTOR/HCG	10
SAFETY BRAKE	5
	246