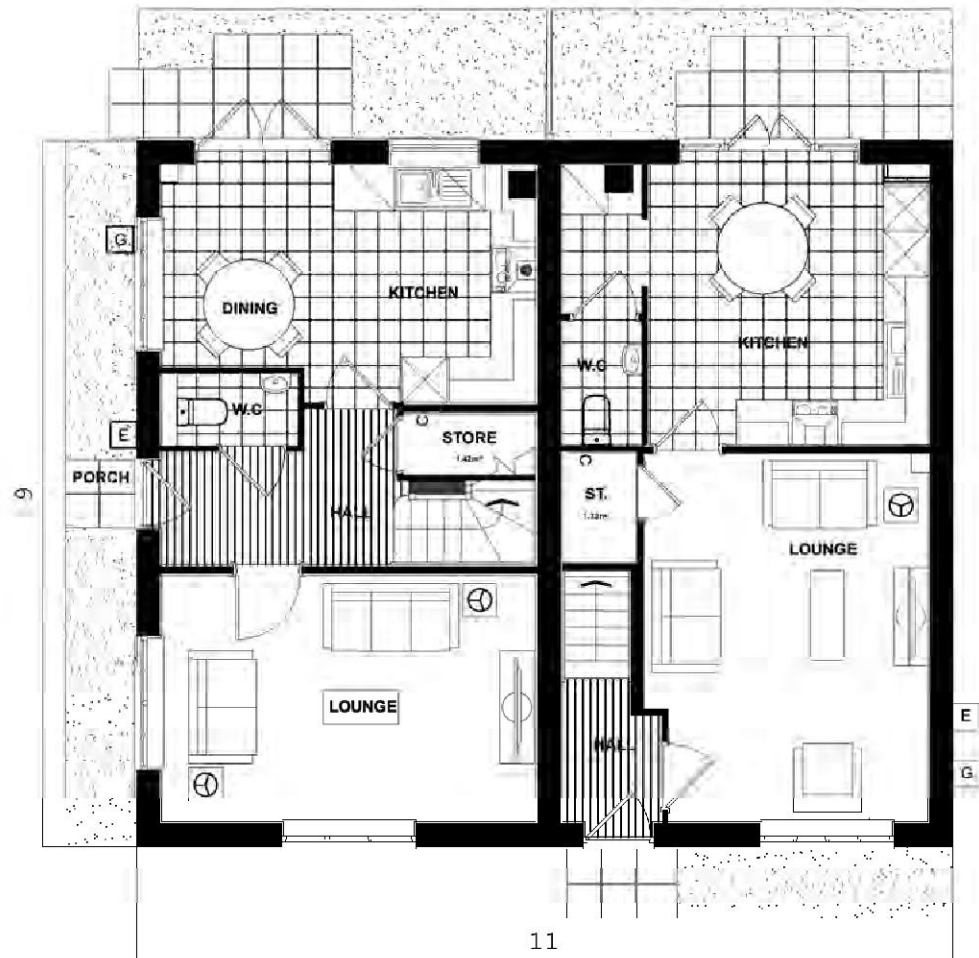


Scale 1:100
Issue 4.4



**NSS.302 LYFORD
GROUND FLOOR PLAN**

NSS.372-1 BUXTON

B BOILER LOCATION E EXISTING METERS LOCATION G GAS METERS LOCATION C DOWNRAISE GATE LOCATION



**NSS.302 LYFORD
FIRST FLOOR PLAN**

NSS.372-1 BUXTON

PEGASUS DRAWING NUMBER:
P18-2109-102

NOTES:

DRAWING BASED ON LINEWORK PROVIDED BY BLOOR HOMES. (DRAWING NO: NSS.817.PL-01 Lyford-Buxton)

REFER TO MATERIALS LAYOUT FOR INDIVIDUAL PLOT MATERIALS INCLUDING DOOR COLOURS. (DRAWING NO: P18-2109-93-06)

PLOT NUMBERS
AS: 503-504, 542-543
HANDED:

LYFORD - National Space Standards		
3B4P	Actual Area	NSS Requirement
Ground Floor Plan	42.97m ²	
First Floor Plan	42.97m ²	
Total floor area m ²	85.93m²	84.00m ²
Total floor area ft ²	925ft ²	904ft ²
Bedroom 1	12.34m ²	11.5m ²
Bedroom 2	7.52m ²	7.5m ²
Bedroom 3	7.51m ²	7.5m ²
Store Under Stair	1.42m ²	
Store Landing	0.88m ²	
Store Bedroom 1 (SB1)	0.59m ²	
Built in store total	2.89m²	2.5m²

BUXTON - National Space Standards		
3B4P	Actual Area	NSS Requirement
Ground Floor Plan	42.00m ²	
First Floor Plan	42.00m ²	
Total floor area m ²	84.00m²	84.00m ²
Total floor area ft ²	904ft ²	904ft ²
Bedroom 1	11.50m ²	11.5m ²
Bedroom 2	9.62m ²	7.5m ²
Bedroom 3	7.75m ²	7.5m ²
Store Under Stair	1.32m ²	
Store Bedroom 1 (SB1)	0.15m ²	
Store Bedroom 2 (SB2)	1.02m ²	
Built in store total	2.50m²	2.5m²

Lyford/Buxton

CA2: GREEN FRINGE

NSS.817.PL-01

DATE: FEB 2021 REV:

SCALE: 1:100 @ A3

DRAWN: MJE 87.30 / 85.35m²
CHECKED: GPM 940 / 919 ft²

BLOOR HOMES