

An architectural rendering of a residential development. The scene shows a paved walkway leading through a landscaped area with green grass, shrubs, and trees. In the background, there are several modern houses with gabled roofs and dormer windows. A few people are walking on the path, and a car is parked in the distance. The sky is blue with light clouds.

LAND EAST OF  
ASHINGDON ROAD  
ROCHFORD

PHASE 1 HOUSE TYPE PACK

PREPARED BY PEGASUS DESIGN  
ON BEHALF OF BLOOR HOMES

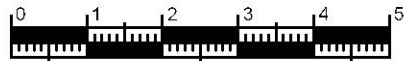
P18-2109\_70C | SEPTEMBER 2020

**P18-2109\_70C PHASE 1 HOUSE TYPE SCHEDULE**

**AFFORDABLE HOUSING**

PLOT NO.	HOUSE TYPE	STYLE	DRAWING NO.	PLOT NO.	HOUSE TYPE	STYLE	DRAWING NO.	PLOT NO.	HOUSE TYPE	STYLE	DRAWING NO.
1	Macaulay	Render 1	P18-2109-70 32 & 33	69	Savage	Brick 3	P18-2109-70 72 & 73	137	Buxton	Brick 2	P18-2109-70 08
2	Warton	Brick 1	P18-2109-70 40	70	Savage	Brick 3	P18-2109-70 72 & 73	138	Kane	Brick 2	P18-2109-70 13
3	Hulford	Brick 1	P18-2109-70 29	71	Sassoon	Brick 3	P18-2109-70 72 & 73	139	Kane	Brick 2	P18-2109-70 13
4	Gwynn	Brick 1	P18-2109-70 45	72	Huxley	Render 1	P18-2109-70 20	140	Gwynn	Brick 2	P18-2109-70 46
5	Forbes	Render 1	P18-2109-70 22 & 25	73	Kane	Brick 2	P18-2109-70 13	141	Beckett	Brick 1	P18-2109-70 37 & 39
6	Forbes	Render 1	P18-2109-70 22 & 25	74	Kane	Brick 2	P18-2109-70 13	142	Plomer	Brick 2	P18-2109-70 50
7	Gwynn	Brick 1	P18-2109-70 45	75	Hulford	Brick 2	P18-2109-70 30	143	Warton	Brick 2	P18-2109-70 41
8	Chandler	Brick 1	P18-2109-70 04	76	Warton	Brick 2	P18-2109-70 41	144	Gwynn	Brick 2	P18-2109-70 46
9	Chandler	Brick 1	P18-2109-70 04	77	Macaulay	Render 2	P18-2109-70 35 & 36	145	Dekker	Brick 2	P18-2109-70 02
10	Lawrence	Brick 1	P18-2109-70 15	78	Maynard	Render 2	P18-2109-70 35 & 36	146	Dekker	Brick 2	P18-2109-70 02
11	Gwynn	Brick 2	P18-2109-70 46	79	Forbes	Brick 4	P18-2109-70 24 & 25	147	Kane	Brick 2	P18-2109-70 13
12	Hulford	Brick 2	P18-2109-70 30	80	Forbes	Brick 4	P18-2109-70 24 & 25	148	Kane	Brick 2	P18-2109-70 13
13	Lawrence	Brick 2	P18-2109-70 17 & 19	81	Maynard	Render 2	P18-2109-70 35 & 36	149	Benson	Brick 1	P18-2109-70 31
14	Buxton	Brick 2	P18-2109-70 17 & 19	82	Macaulay	Render 2	P18-2109-70 35 & 36	150	Beckett	Brick 1	P18-2109-70 37 & 39
15	Dekker	Brick 2	P18-2109-70 02	83	Macaulay	Render 1	P18-2109-70 32 & 33	151	Gwynn	Brick 2	P18-2109-70 46
16	Dekker	Brick 2	P18-2109-70 02	84	Plomer	Brick 1	P18-2109-70 49	152	Warton	Brick 2	P18-2109-70 41
17	Maisonette	Brick 3	P18-2109-70 61 & 62	85	Gwynn	Brick 1	P18-2109-70 45	153	Chandler	Brick 2	P18-2109-70 05
18	Maisonette	Brick 3	P18-2109-70 61 & 62	86	Macaulay	Render 1	P18-2109-70 32 & 33	154	Chandler	Brick 2	P18-2109-70 05
19	Maisonette	Brick 3	P18-2109-70 61 & 62	87	Hulford	Brick 2	P18-2109-70 30	155	Kane	Brick 2	P18-2109-70 13
20	Maisonette	Brick 3	P18-2109-70 61 & 62	88	Kane	Brick 2	P18-2109-70 13	156	Kane	Brick 2	P18-2109-70 13
21	Sassoon	Brick 3	P18-2109-70 70	89	Kane	Brick 2	P18-2109-70 13	157	Chandler	Brick 2	P18-2109-70 05
22	Sassoon	Brick 3	P18-2109-70 70	90	Savage	Brick 2	P18-2109-70 67	158	Chandler	Brick 2	P18-2109-70 05
23	Savage	Brick 3	P18-2109-70 68	91	Savage	Brick 2	P18-2109-70 67	159	Dowson	Brick 1	P18-2109-70 47 & 48
24	Savage	Brick 3	P18-2109-70 68	92	Sassoon	Brick 2	P18-2109-70 69	160	Kane	Brick 1	P18-2109-70 12
25	Maisonette	Brick 2	P18-2109-70 60 & 62	93	Sassoon	Brick 2	P18-2109-70 69	161	Kane	Brick 1	P18-2109-70 12
26	Maisonette	Brick 2	P18-2109-70 60 & 62	94	Symons	Brick 3	P18-2109-70 58 & 59	162	Buxton	Brick 1	P18-2109-70 07
27	Maisonette	Brick 2	P18-2109-70 60 & 62	95	Symons	Brick 3	P18-2109-70 58 & 59	163	Buxton	Brick 1	P18-2109-70 07
28	Maisonette	Brick 2	P18-2109-70 60 & 62	96	Symons	Brick 3	P18-2109-70 58 & 59	164	Macaulay	Render 1	P18-2109-70 32 & 33
29	Auden	Brick 4/Tile	P18-2109-70 51 to 57	97	Symons	Brick 3	P18-2109-70 58 & 59	165	Chandler	Brick 3	P18-2109-70 06
30	Auden	Brick 4/Tile	P18-2109-70 51 to 57	98	Dekker	Brick 2	P18-2109-70 02	166	Chandler	Brick 3	P18-2109-70 06
31	Auden	Brick 4/Tile	P18-2109-70 51 to 57	99	Dekker	Brick 2	P18-2109-70 02	167	Buxton	Brick 3	P18-2109-70 18 & 19
32	Auden	Brick 4/Tile	P18-2109-70 51 to 57	100	Warton	Brick 2	P18-2109-70 41	168	Lawrence	Brick 3	P18-2109-70 18 & 19
33	Auden	Brick 4/Tile	P18-2109-70 51 to 57	101	Dekker	Brick 1	P18-2109-70 01	169	Dekker	Brick 2	P18-2109-70 02
34	Auden	Brick 4/Tile	P18-2109-70 51 to 57	102	Dekker	Brick 1	P18-2109-70 01	170	Dekker	Brick 2	P18-2109-70 02
35	Auden	Brick 4/Tile	P18-2109-70 51 to 57	103	Forbes	Brick 1	P18-2109-70 23 & 25	171	Dekker	Brick 2	P18-2109-70 02
36	Auden	Brick 4/Tile	P18-2109-70 51 to 57	104	Forbes	Brick 1	P18-2109-70 23 & 25	172	Dekker	Brick 2	P18-2109-70 02
37	Auden	Brick 4/Tile	P18-2109-70 51 to 57	105	Macaulay	Render 2	P18-2109-70 35 & 36	173	Auden	Brick 4/Tile	P18-2109-70 51 to 57
38	Stuart	Brick 2	P18-2109-70 63	106	Maynard	Render 2	P18-2109-70 35 & 36	174	Auden	Brick 4/Tile	P18-2109-70 51 to 57
39	Stuart	Brick 2	P18-2109-70 63	107	Forbes	Brick 4	P18-2109-70 24 & 25	175	Auden	Brick 4/Tile	P18-2109-70 51 to 57
40	Sassoon	Brick 3	P18-2109-70 70	108	Forbes	Brick 4	P18-2109-70 24 & 25	176	Auden	Brick 4/Tile	P18-2109-70 51 to 57
41	Sassoon	Brick 3	P18-2109-70 70	109	Maynard	Render 2	P18-2109-70 35 & 36	177	Auden	Brick 4/Tile	P18-2109-70 51 to 57
42	Stuart	Brick 2	P18-2109-70 64 & 66	110	Macaulay	Render 2	P18-2109-70 35 & 36	178	Auden	Brick 4/Tile	P18-2109-70 51 to 57
43	Stuart	Brick 2	P18-2109-70 64 & 66	111	Warton	Brick 2	P18-2109-70 41	179	Auden	Brick 4/Tile	P18-2109-70 51 to 57
44	Stuart	Brick 2	P18-2109-70 64 & 66	112	Buxton	Brick 2	P18-2109-70 08	180	Auden	Brick 4/Tile	P18-2109-70 51 to 57
45	Stuart	Brick 2	P18-2109-70 64 & 66	113	Buxton	Brick 2	P18-2109-70 08	181	Auden	Brick 4/Tile	P18-2109-70 51 to 57
46	Scurfield	Brick 2	P18-2109-70 74	114	Beckett	Brick 1	P18-2109-70 37	182	Lawrence	Brick 1	P18-2109-70 16 & 19
47	Sassoon	Brick 2	P18-2109-70 74	115	Forbes	Brick 1	P18-2109-70 23 & 25	183	Buxton	Brick 1	P18-2109-70 16 & 19
48	Sassoon	Brick 2	P18-2109-70 69	116	Forbes	Brick 1	P18-2109-70 23 & 25	184	Gwynn	Brick 1	P18-2109-70 45
49	Sassoon	Brick 2	P18-2109-70 69	117	Musgrave	Brick 1	P18-2109-70 43	185	Musgrave	Render 1	P18-2109-70 42
50	Sassoon	Brick 2	P18-2109-70 69	118	Musgrave	Brick 1	P18-2109-70 43	186	Musgrave	Render 1	P18-2109-70 42
51	Sassoon	Brick 2	P18-2109-70 69	119	Benson	Brick 1	P18-2109-70 31	187	Forbes	Brick 1	P18-2109-70 23 & 25
52	Chandler	Brick 2	P18-2109-70 05	120	Macaulay	Render 1	P18-2109-70 32 & 33	188	Forbes	Brick 1	P18-2109-70 23 & 25
53	Chandler	Brick 2	P18-2109-70 05	121	Kane	Brick 1	P18-2109-70 12	189	Hulford	Brick 1	P18-2109-70 29
54	Buxton	Brick 3	P18-2109-70 09	122	Kane	Brick 1	P18-2109-70 12	190	Hulford	Brick 1	P18-2109-70 29
55	Buxton	Brick 3	P18-2109-70 09	123	Hulford	Brick 1	P18-2109-70 29	191	Macaulay	Render 1	P18-2109-70 34 & 36
56	Kane	Brick 2	P18-2109-70 13	124	Musgrave	Brick 1	P18-2109-70 43	192	Maynard	Render 1	P18-2109-70 34 & 36
57	Kane	Brick 2	P18-2109-70 13	125	Maynard	Brick 1	P18-2109-70 26 & 28	193	Warton	Brick 1	P18-2109-70 40
58	Dekker	Brick 3	P18-2109-70 03	126	Maynard	Brick 1	P18-2109-70 26 & 28	194	Buxton	Brick 1	P18-2109-70 10 & 11
59	Dekker	Brick 3	P18-2109-70 03	127	Musgrave	Brick 1	P18-2109-70 43	195	Dekker	Brick 1	P18-2109-70 10 & 11
60	Sassoon	Brick 2	P18-2109-70 69	128	Warton	Brick 1	P18-2109-70 40	196	Macaulay	Render 1	P18-2109-70 32 & 33
61	Sassoon	Brick 2	P18-2109-70 69	129	Gwynn	Brick 1	P18-2109-70 45	197	Lawrence	Brick 1	P18-2109-70 16 & 19
62	Savage	Brick 2	P18-2109-70 67	130	Macaulay	Render 1	P18-2109-70 32 & 33	198	Warton	Brick 1	P18-2109-70 40
63	Savage	Brick 2	P18-2109-70 67	131	Lawrence	Brick 1	P18-2109-70 15	199	Kane	Brick 3	P18-2109-70 14
64	Stuart	Brick 3	P18-2109-70 65 & 66	132	Maynard	Brick 2	P18-2109-70 27 & 28	200	Kane	Brick 3	P18-2109-70 14
65	Stuart	Brick 3	P18-2109-70 65 & 66	133	Maynard	Brick 2	P18-2109-70 27 & 28	201	Huxley	Brick 3	P18-2109-70 21
66	Stuart	Brick 3	P18-2109-70 65 & 66	134	Musgrave	Brick 2	P18-2109-70 44	202	Sassoon	Brick 3	P18-2109-70 75
67	Stuart	Brick 3	P18-2109-70 65 & 66	135	Musgrave	Brick 2	P18-2109-70 44	203	Scurfield	Brick 3	P18-2109-70 75
68	Sassoon	Brick 3	P18-2109-70 72 & 73	136	Buxton	Brick 2	P18-2109-70 08	204	Sassoon	Brick 2	P18-2109-70 71 & 73





Scale 1:100  
Issue 4



NSS.277  
FRONT ELEVATION

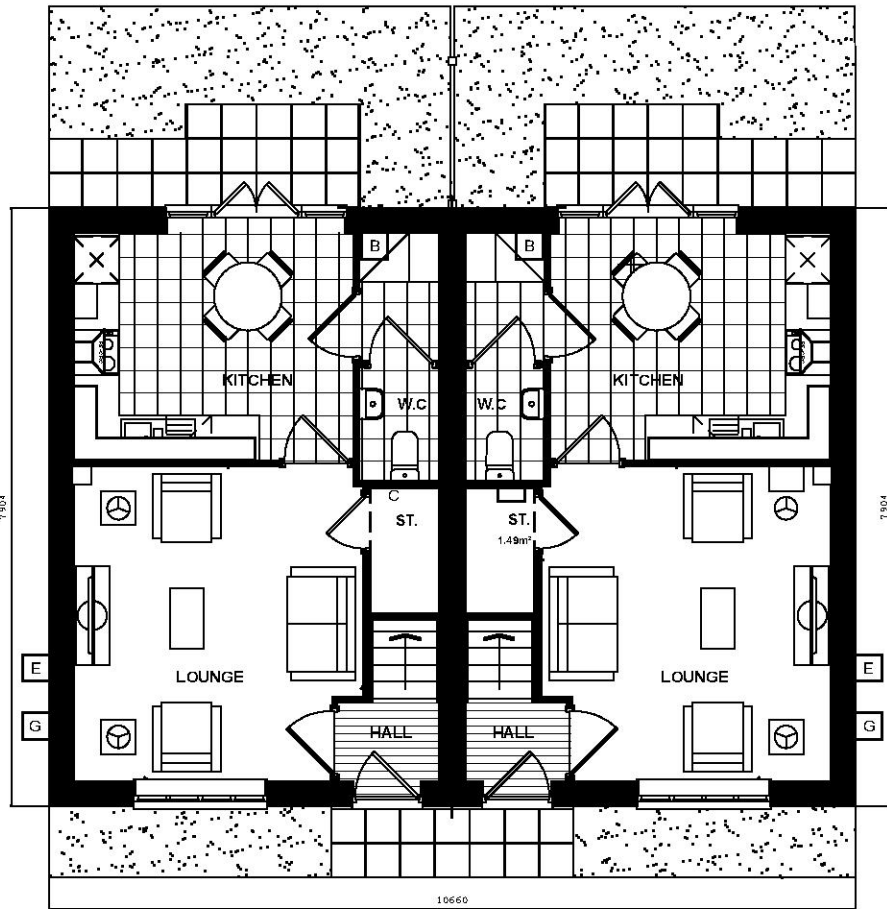


NSS.277-1  
SIDE ELEVATION



NSS.277-1  
REAR ELEVATION

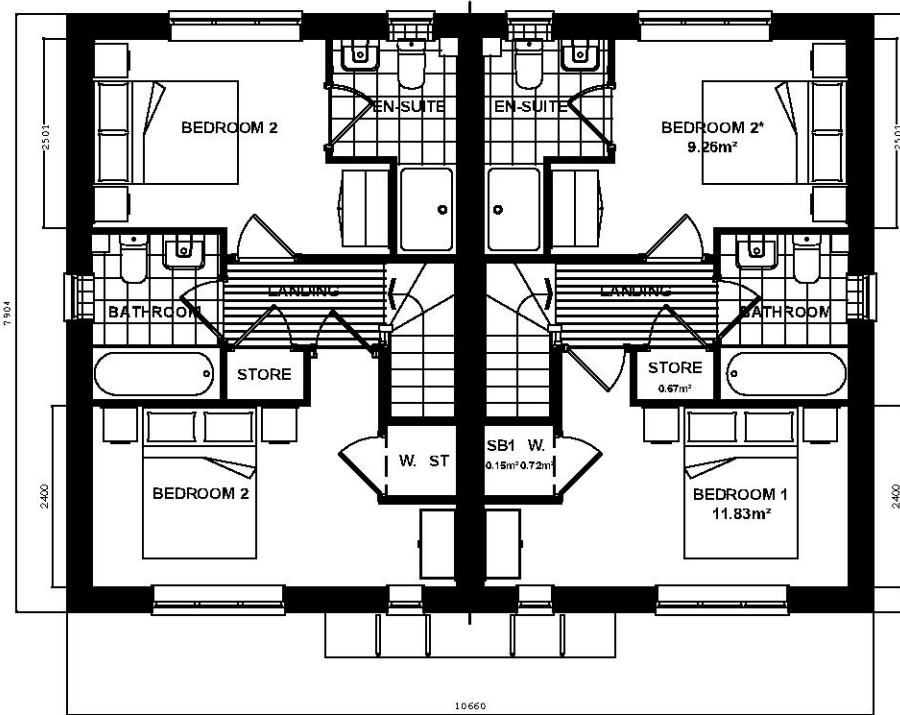
NSS.277



NSS.277  
GROUND FLOOR PLAN

[B] NO LEAK LOCATION [G] GAS METER LOCATION [E] ELECTRIC METER LOCATION [ ] CONSUMER UNIT LOCATION

NSS.277-1



NSS.277  
FIRST FLOOR PLAN

\* Denotes floor areas shown to comply with National Described Space Standards (see schedule). Room layout shown as furnished and does not demonstrate compliance.

NSS.277-1

National Space Standards		
2B3P	Actual Area	NSS Requirement
Ground Floor Plan	35.00m <sup>2</sup>	
First Floor Plan	35.00m <sup>2</sup>	
Total Floor Area m <sup>2</sup>	<b>70.00m<sup>2</sup></b>	70.00m <sup>2</sup>
Total Floor Area ft <sup>2</sup>	753ft <sup>2</sup>	753ft <sup>2</sup>
Bedroom 2	9.26m <sup>2</sup>	7.5m <sup>2</sup>
Bedroom 1	11.83m <sup>2</sup>	11.5m <sup>2</sup>
Store Under Stair	1.49m <sup>2</sup>	
Store Bedroom 1	0.67m <sup>2</sup>	
Store Bulkhead	0.15m <sup>2</sup>	
<b>Built in Store Total</b>	<b>2.31m<sup>2</sup></b>	<b>2.0m<sup>2</sup></b>

PEGASUS DRAWING NUMBER:  
P18-2109-70\_01

**NOTES:**  
DRAWING BASED ON LINEWORK  
PROVIDED BY BLOOR HOMES.  
(DRAWING NO:  
NSS.277\_NSS.277-1.PL01)

REFER TO MATERIALS LAYOUT  
FOR INDIVIDUAL PLOT MATERIALS  
INCLUDING DOOR  
COLOURS.(DRAWING NO:  
P18-2109-62-03)

**Dekker  
BRICK**

NSS.277\_NSS.277-1.PL-01

DATE: SEPT 2019 REV:  
SCALE: A3

DRAWN: VO 71.21m<sup>2</sup>  
CHECKED: TP 766ft<sup>2</sup>

**ISSUE 4**

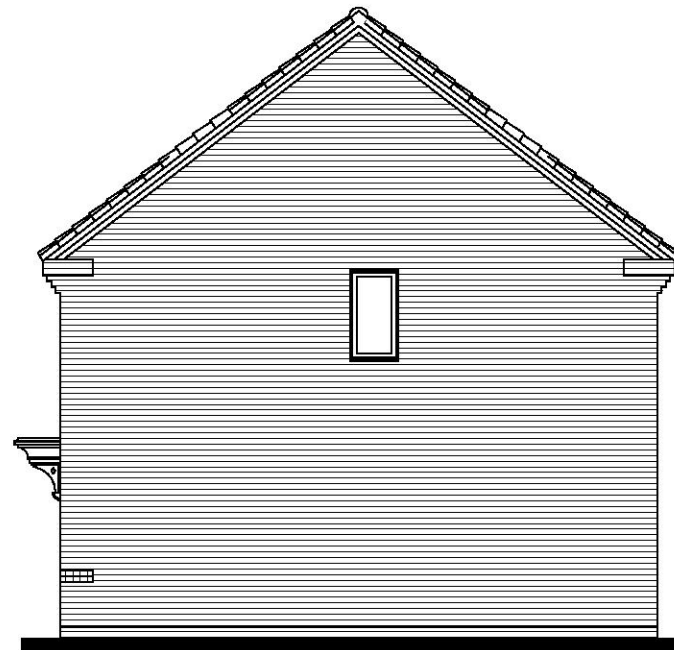
**BLOOR HOMES**



Scale 1:100  
Issue 4



NSS.277  
FRONT ELEVATION

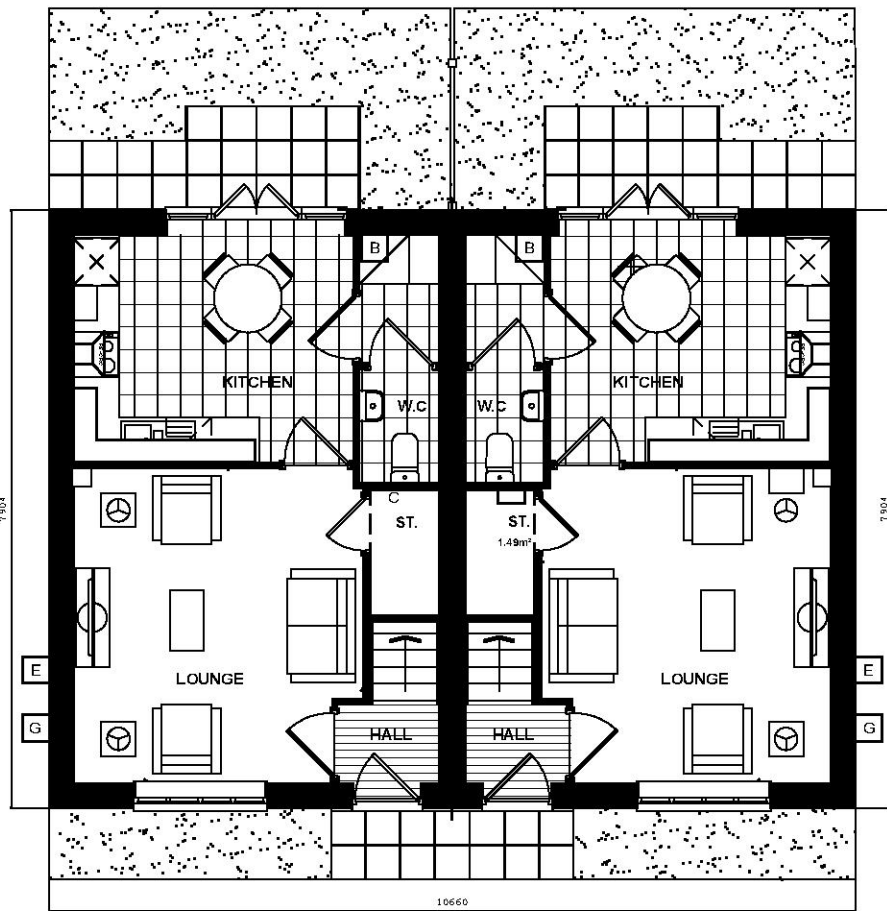


NSS.277-1  
SIDE ELEVATION



NSS.277-1  
REAR ELEVATION

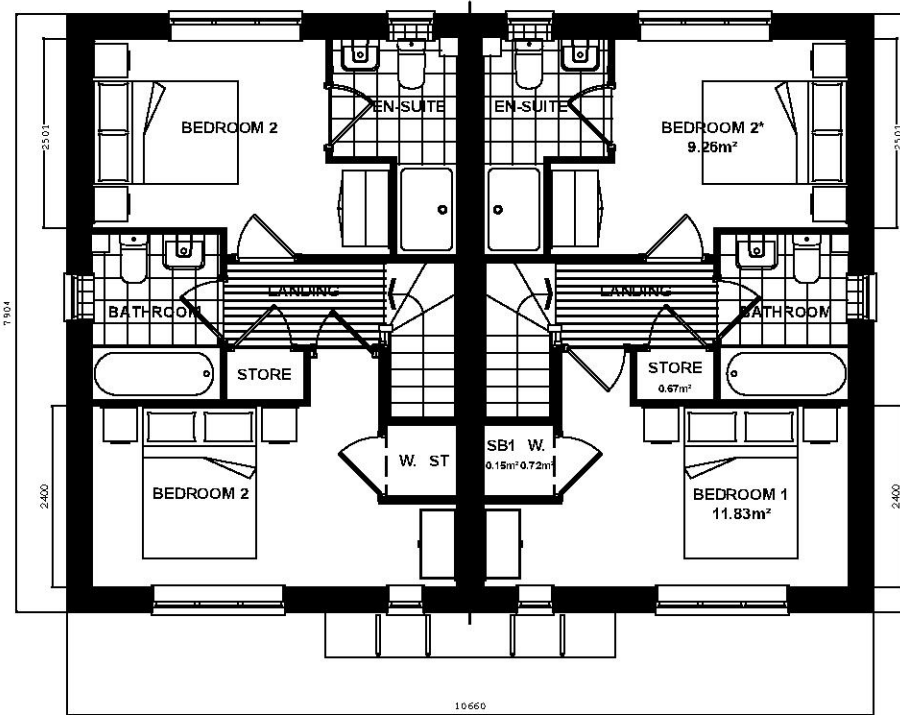
NSS.277



NSS.277  
GROUND FLOOR PLAN

NSS.277-1

[B] NO LEAK LOCATION [G] GAS METER LOCATION [E] ELECTRIC METER LOCATION [ ] CONSUMER UNIT LOCATION



NSS.277  
FIRST FLOOR PLAN

NSS.277-1

\* Denotes floor areas shown to comply with National Described Space Standards (see schedule). Room layout shown as furnished and does not demonstrate compliance.

National Space Standards		
2B3P	Actual Area	NSS Requirement
Ground Floor Plan	35.00m <sup>2</sup>	
First Floor Plan	35.00m <sup>2</sup>	
Total Floor Area m <sup>2</sup>	<b>70.00m<sup>2</sup></b>	70.00m <sup>2</sup>
Total Floor Area ft <sup>2</sup>	753ft <sup>2</sup>	753ft <sup>2</sup>
Bedroom 2	9.26m <sup>2</sup>	7.5m <sup>2</sup>
Bedroom 1	11.83m <sup>2</sup>	11.5m <sup>2</sup>
Store Under Stair	1.49m <sup>2</sup>	
Store Bedroom 1	0.67m <sup>2</sup>	
Store Bulkhead	0.15m <sup>2</sup>	
<b>Built in Store Total</b>	<b>2.31m<sup>2</sup></b>	<b>2.0m<sup>2</sup></b>

PEGASUS DRAWING NUMBER:  
P18-2109-70\_02

**NOTES:**  
DRAWING BASED ON LINEWORK  
PROVIDED BY BLOOR HOMES.  
(DRAWING NO:  
NSS.277\_NSS.277-1.PL01)

REFER TO MATERIALS LAYOUT  
FOR INDIVIDUAL PLOT MATERIALS  
INCLUDING DOOR  
COLOURS.(DRAWING NO:  
P18-2109-62-03)

**Dekker  
BRICK**

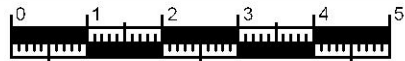
NSS.277\_NSS.277-1.PL-01

DATE: SEPT 2019 REV:  
SCALE: A3

DRAWN: VO 71.21m<sup>2</sup>  
CHECKED: TP 766ft<sup>2</sup>

**ISSUE 4**

**BLOOR HOMES**



Scale 1:100  
Issue 4



NSS.277  
FRONT ELEVATION

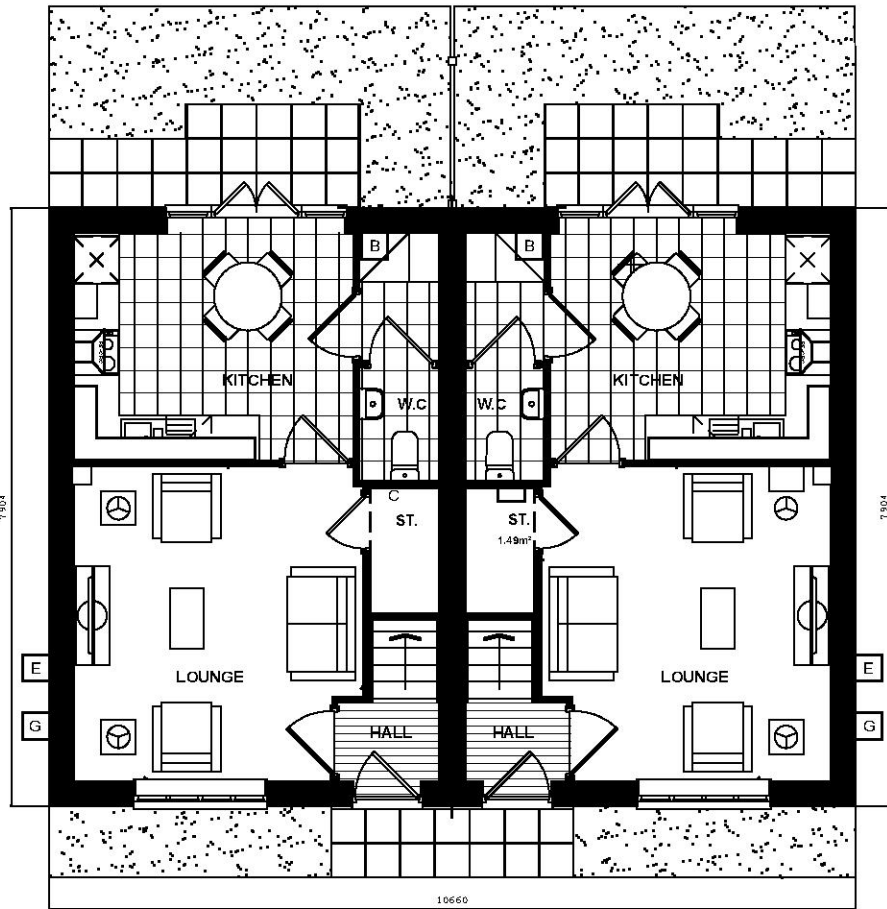


NSS.277-1  
SIDE ELEVATION



NSS.277-1  
REAR ELEVATION

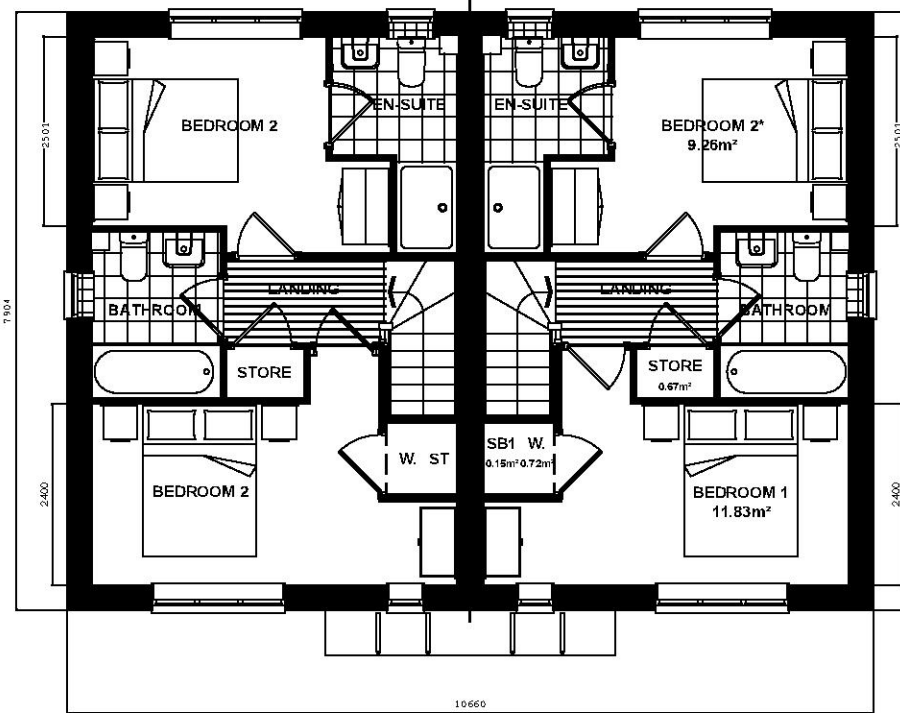
NSS.277



NSS.277  
GROUND FLOOR PLAN

NSS.277-1

B NO LEAK LOCATION G GAS METER LOCATION E ELECTRIC METER LOCATION CONSUMER UNIT LOCATION



NSS.277  
FIRST FLOOR PLAN

NSS.277-1

\* Denotes floor areas shown to comply with National Described Space Standards (see schedule). Room layout shown as furnished and does not demonstrate compliance.

National Space Standards		
2B3P	Actual Area	NSS Requirement
Ground Floor Plan	35.00m <sup>2</sup>	
First Floor Plan	35.00m <sup>2</sup>	
Total Floor Area m <sup>2</sup>	<b>70.00m<sup>2</sup></b>	70.00m <sup>2</sup>
Total Floor Area ft <sup>2</sup>	753ft <sup>2</sup>	753ft <sup>2</sup>
Bedroom 2	9.26m <sup>2</sup>	7.5m <sup>2</sup>
Bedroom 1	11.83m <sup>2</sup>	11.5m <sup>2</sup>
Store Under Stair	1.49m <sup>2</sup>	
Store Bedroom 1	0.67m <sup>2</sup>	
Store Bulkhead	0.15m <sup>2</sup>	
<b>Built in Store Total</b>	<b>2.31m<sup>2</sup></b>	<b>2.0m<sup>2</sup></b>

PEGASUS DRAWING NUMBER:  
P18-2109-70\_03

**NOTES:**  
DRAWING BASED ON LINEWORK  
PROVIDED BY BLOOR HOMES.  
(DRAWING NO:  
NSS.277\_NSS.277-1.PL01)

REFER TO MATERIALS LAYOUT  
FOR INDIVIDUAL PLOT MATERIALS  
INCLUDING DOOR  
COLOURS.(DRAWING NO:  
P18-2109-62-03)

**Dekker**  
BRICK

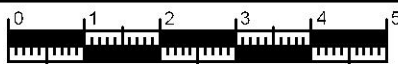
NSS.277\_NSS.277-1.PL-01

DATE: SEPT 2019 REV:  
SCALE: A3

DRAWN: VO 71.21m<sup>2</sup>  
CHECKED: TP 766ft<sup>2</sup>

**ISSUE 4**

**BLOOR HOMES**

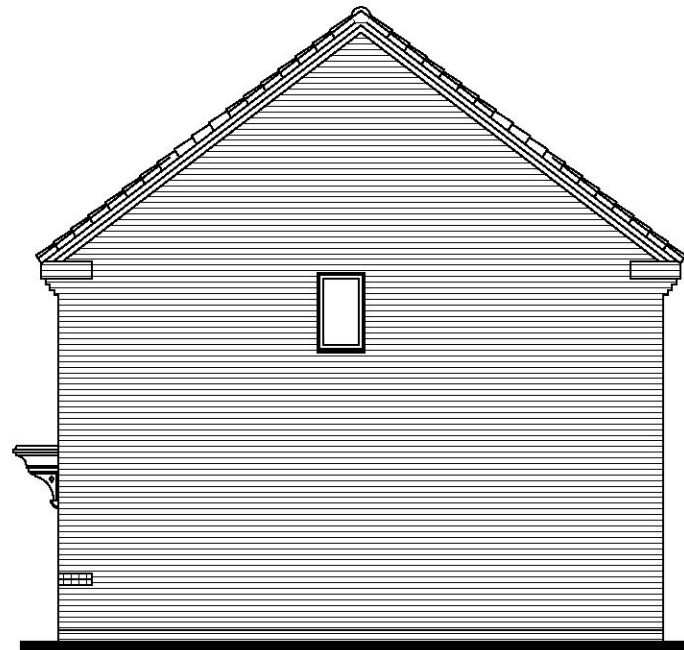


Scale 1:100  
Issue 4



NSS.272  
FRONT ELEVATION

NSS.272

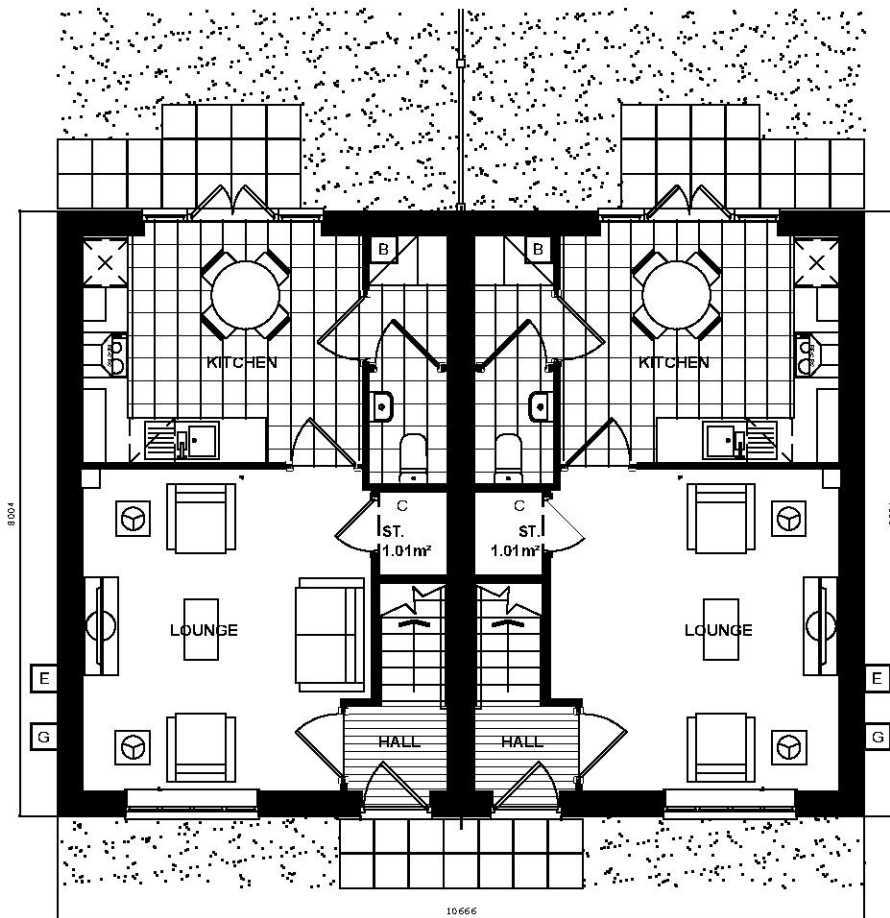


NSS.272  
SIDE ELEVATION



NSS.272-1  
REAR ELEVATION

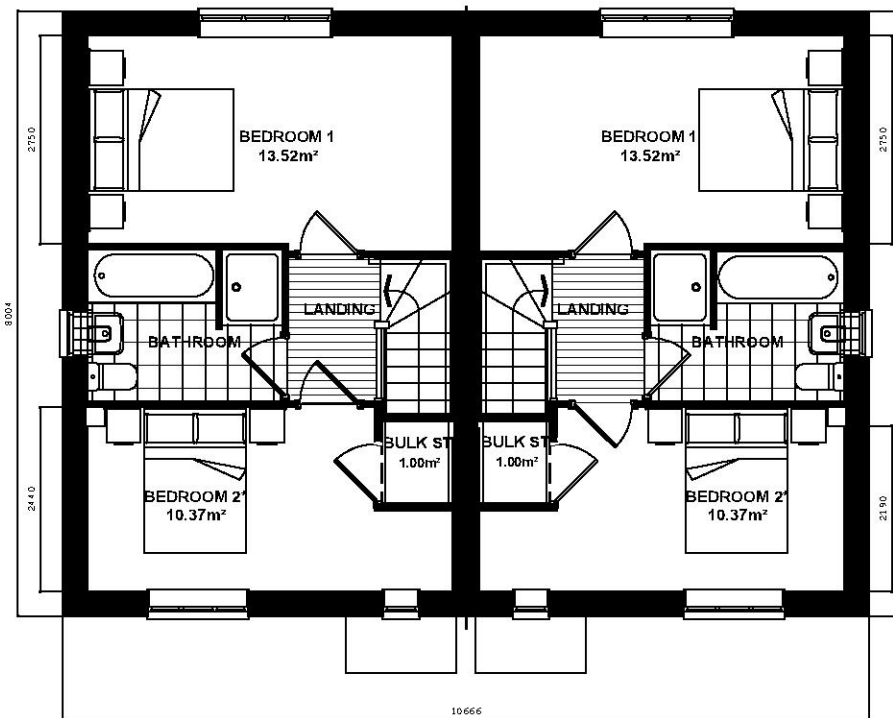
NSS.272



NSS.272  
GROUND FLOOR PLAN

NSS.272-1

B BOILER LOCAT ON G GAS METER LOCAT ON E ELECTRIC METER LOCAT ON C CONSUMER UN TLOCAT ON



NSS.272  
FIRST FLOOR PLAN

NSS.272-1

\* Denotes floor areas shown to comply with National Described Space Standards (see schedule). Room layout shown as furnished and does not demonstrate compliance.

National Space Standards		
2B3P	Actual Area	NSS Requirement
Ground Floor Plan	35.50m <sup>2</sup>	
First Floor Plan	35.50m <sup>2</sup>	
Total Floor Area m <sup>2</sup>	<b>71.00m<sup>2</sup></b>	70.00m <sup>2</sup>
Total Floor Area ft <sup>2</sup>	764ft <sup>2</sup>	753ft <sup>2</sup>
Bedroom 1	13.52m <sup>2</sup>	11.5m <sup>2</sup>
Bedroom 2	10.37m <sup>2</sup>	7.5m <sup>2</sup>
Store Under Stair	1.01m <sup>2</sup>	
Store Bulkhead	1.00m <sup>2</sup>	
<b>Built in Store Total</b>	<b>2.01m<sup>2</sup></b>	<b>2.0m<sup>2</sup></b>

PEGASUS DRAWING NUMBER:  
P18-2109-70\_04

**NOTES:**  
DRAWING BASED ON LINWORK PROVIDED BY BLOOR HOMES.  
(DRAWING NO:  
NSS.272\_NSS.272-1.PL01)

REFER TO MATERIALS LAYOUT FOR INDIVIDUAL PLOT MATERIALS INCLUDING DOOR COLOURS.(DRAWING NO:  
P18-2109-62-03)

**ISSUE 4**

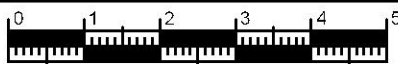
**Chandler  
BRICK**

NSS.272\_NSS.272-1.PL01

DATE: SEPT 2019 REV:  
SCALE: A3

DRAWN: DRW 72.22m<sup>2</sup>  
CHECKED: GPM 777ft<sup>2</sup>

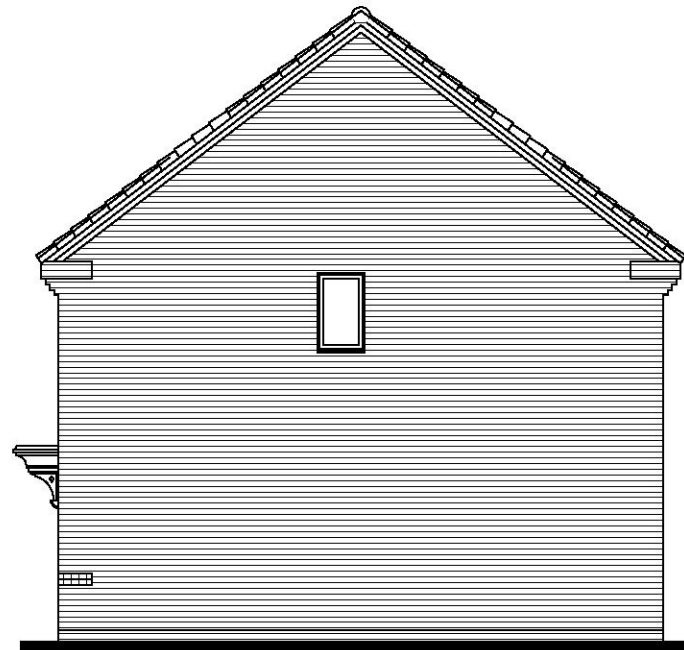
**BLOOR HOMES**



Scale 1:100  
Issue 4



NSS.272  
FRONT ELEVATION

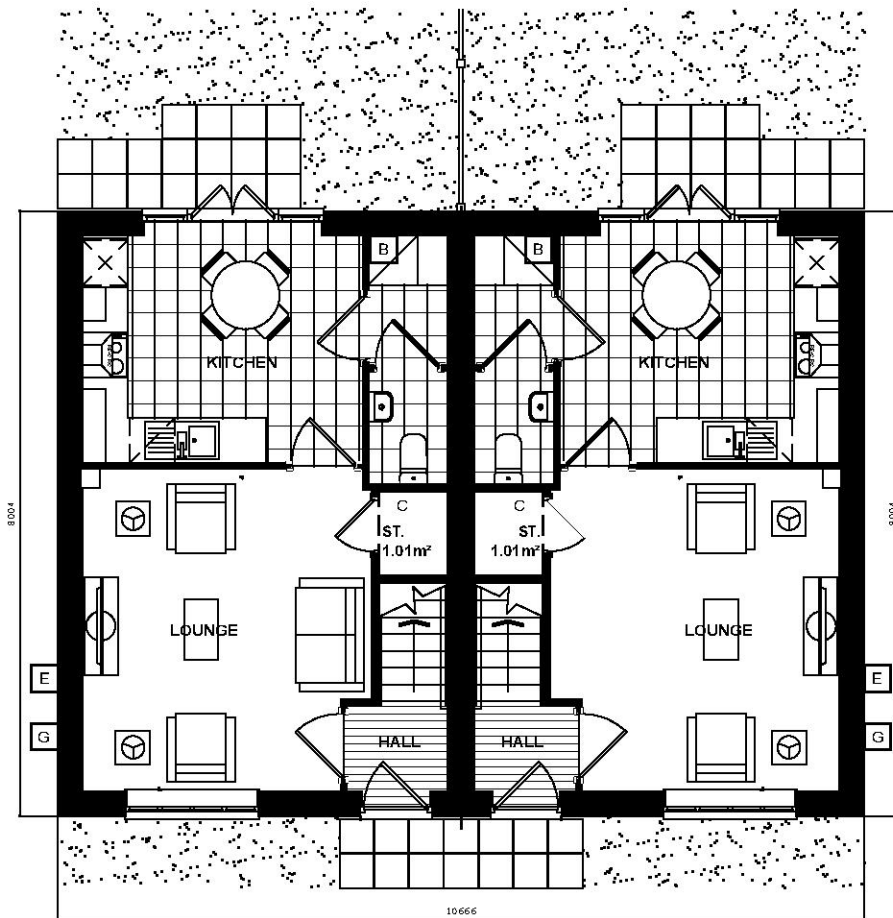


NSS.272  
SIDE ELEVATION



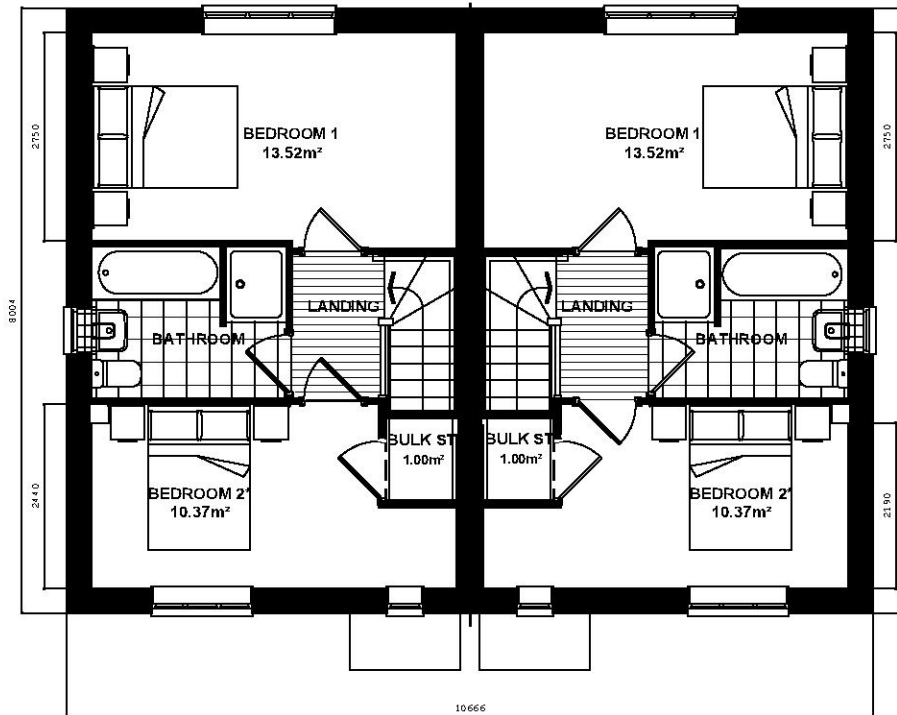
NSS.272-1  
REAR ELEVATION

NSS.272



NSS.272  
GROUND FLOOR PLAN

B BOILER LOCATION G GAS METER LOCATION E ELECTRIC METER LOCATION C CONSUMER UNIT LOCATION



NSS.272  
FIRST FLOOR PLAN

\* Denotes floor areas shown to comply with National Described Space Standards (see schedule). Room layout shown as furnished and does not demonstrate compliance.

National Space Standards		
2B3P	Actual Area	NSS Requirement
Ground Floor Plan	35.50m <sup>2</sup>	
First Floor Plan	35.50m <sup>2</sup>	
Total Floor Area m <sup>2</sup>	<b>71.00m<sup>2</sup></b>	70.00m <sup>2</sup>
Total Floor Area ft <sup>2</sup>	764ft <sup>2</sup>	753ft <sup>2</sup>
Bedroom 1	13.52m <sup>2</sup>	11.5m <sup>2</sup>
Bedroom 2	10.37m <sup>2</sup>	7.5m <sup>2</sup>
Store Under Stair	1.01m <sup>2</sup>	
Store Bulkhead	1.00m <sup>2</sup>	
<b>Built in Store Total</b>	<b>2.01m<sup>2</sup></b>	<b>2.0m<sup>2</sup></b>

PEGASUS DRAWING NUMBER:  
P18-2109-70\_05

**NOTES:**  
DRAWING BASED ON LINWORK PROVIDED BY BLOOR HOMES.  
(DRAWING NO: NSS.272\_NSS.272-1.PL01)

REFER TO MATERIALS LAYOUT FOR INDIVIDUAL PLOT MATERIALS INCLUDING DOOR COLOURS.(DRAWING NO: P18-2109-62-03)

**ISSUE 4**

**Chandler  
BRICK**

NSS.272\_NSS.272-1.PL01

DATE: SEPT 2019 REV:  
SCALE: A3

DRAWN: DRW 72.22m<sup>2</sup>  
CHECKED: GPM 777ft<sup>2</sup>

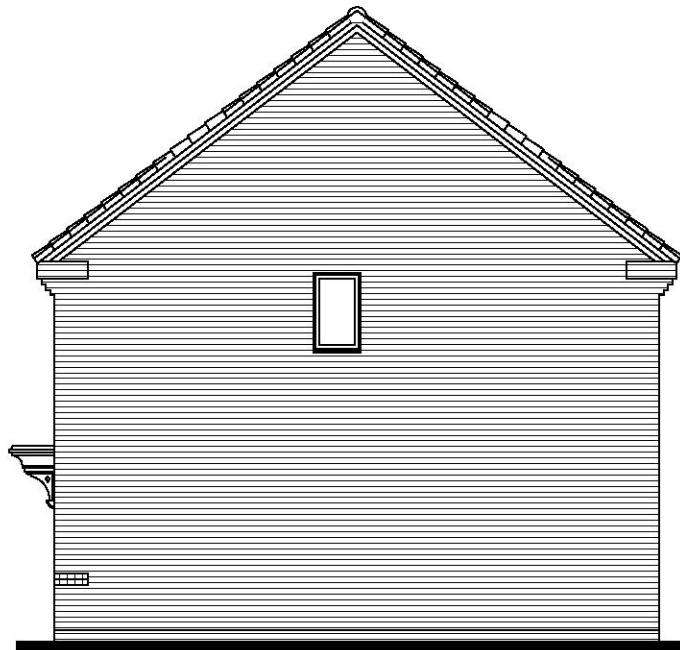
**BLOOR HOMES**



Scale 1:100  
Issue 4



NSS.272  
FRONT ELEVATION

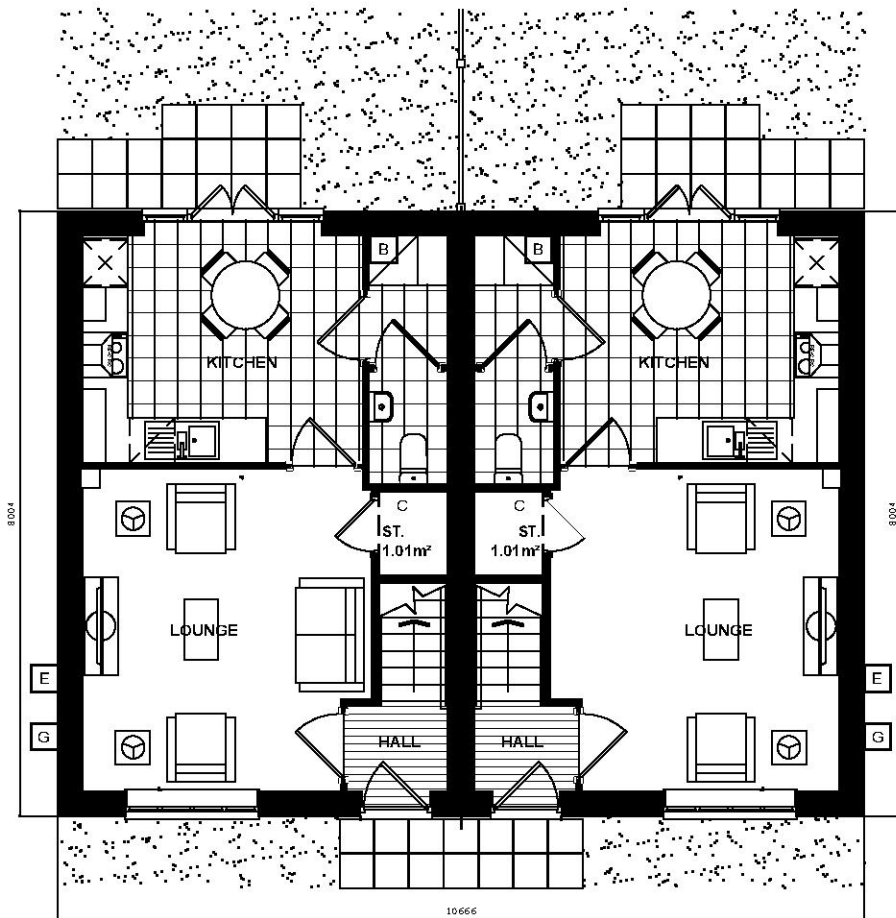


NSS.272  
SIDE ELEVATION



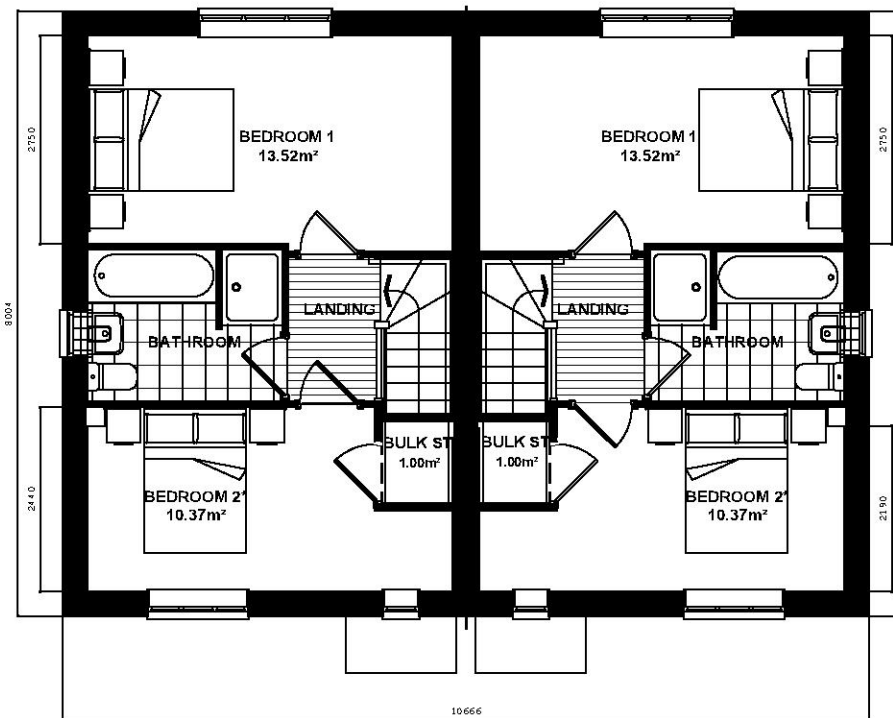
NSS.272-1  
REAR ELEVATION

NSS.272



NSS.272  
GROUND FLOOR PLAN

B BOILER LOCATION G GAS METER LOCATION E ELECTRIC METER LOCATION C CONSUMER UNIT LOCATION



NSS.272  
FIRST FLOOR PLAN

\* Denotes floor areas shown to comply with National Described Space Standards (see schedule). Room layout shown as furnished and does not demonstrate compliance.

National Space Standards		
2B3P	Actual Area	NSS Requirement
Ground Floor Plan	35.50m <sup>2</sup>	
First Floor Plan	35.50m <sup>2</sup>	
Total Floor Area m <sup>2</sup>	<b>71.00m<sup>2</sup></b>	70.00m <sup>2</sup>
Total Floor Area ft <sup>2</sup>	764ft <sup>2</sup>	753ft <sup>2</sup>
Bedroom 1	13.52m <sup>2</sup>	11.5m <sup>2</sup>
Bedroom 2	10.37m <sup>2</sup>	7.5m <sup>2</sup>
Store Under Stair	1.01m <sup>2</sup>	
Store Bulkhead	1.00m <sup>2</sup>	
<b>Built in Store Total</b>	<b>2.01m<sup>2</sup></b>	<b>2.0m<sup>2</sup></b>

PEGASUS DRAWING NUMBER:  
P18-2109-70\_06

**NOTES:**  
DRAWING BASED ON LINWORK PROVIDED BY BLOOR HOMES.  
(DRAWING NO: NSS.272\_NSS.272-1.PL01)

REFER TO MATERIALS LAYOUT FOR INDIVIDUAL PLOT MATERIALS INCLUDING DOOR COLOURS.(DRAWING NO: P18-2109-62-03)

**ISSUE 4**

**Chandler  
BRICK**

NSS.272\_NSS.272-1.PL01

DATE: SEPT 2019 REV:  
SCALE: A3

DRAWN: DRW 72.22m<sup>2</sup>  
CHECKED: GPM 777ft<sup>2</sup>

**BLOOR HOMES**

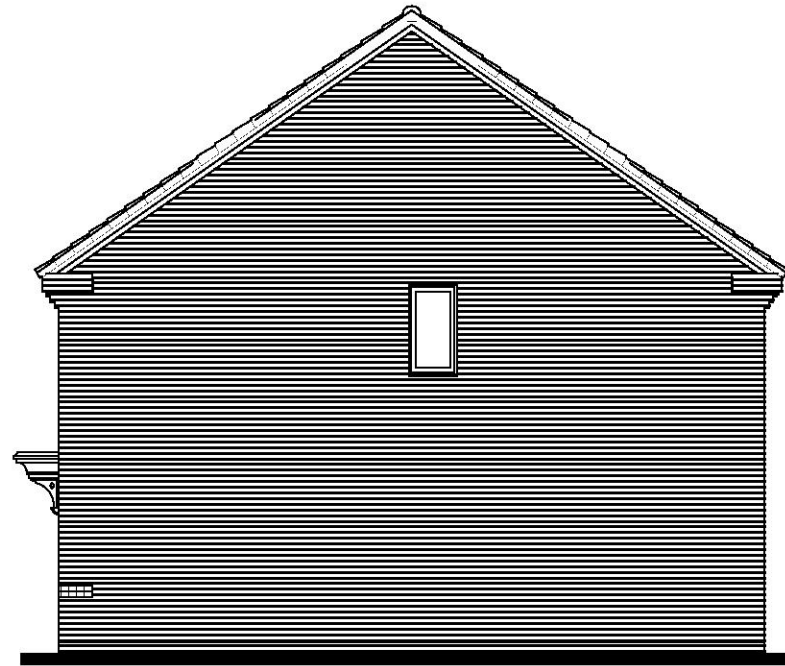


Scale 1:100  
Issue 4



NSS.372 BUXTON  
FRONT ELEVATION

NSS.372-1 BUXTON

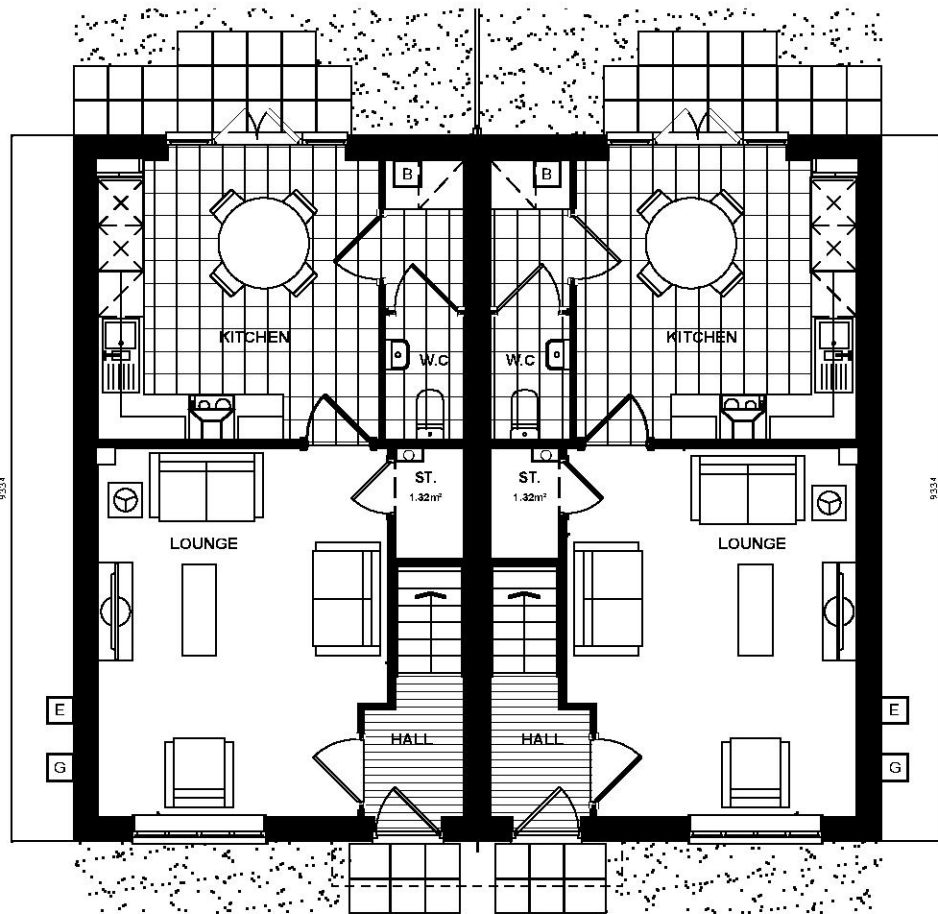


NSS.372-1 BUXTON  
SIDE ELEVATION



NSS.372-1 BUXTON  
REAR ELEVATION

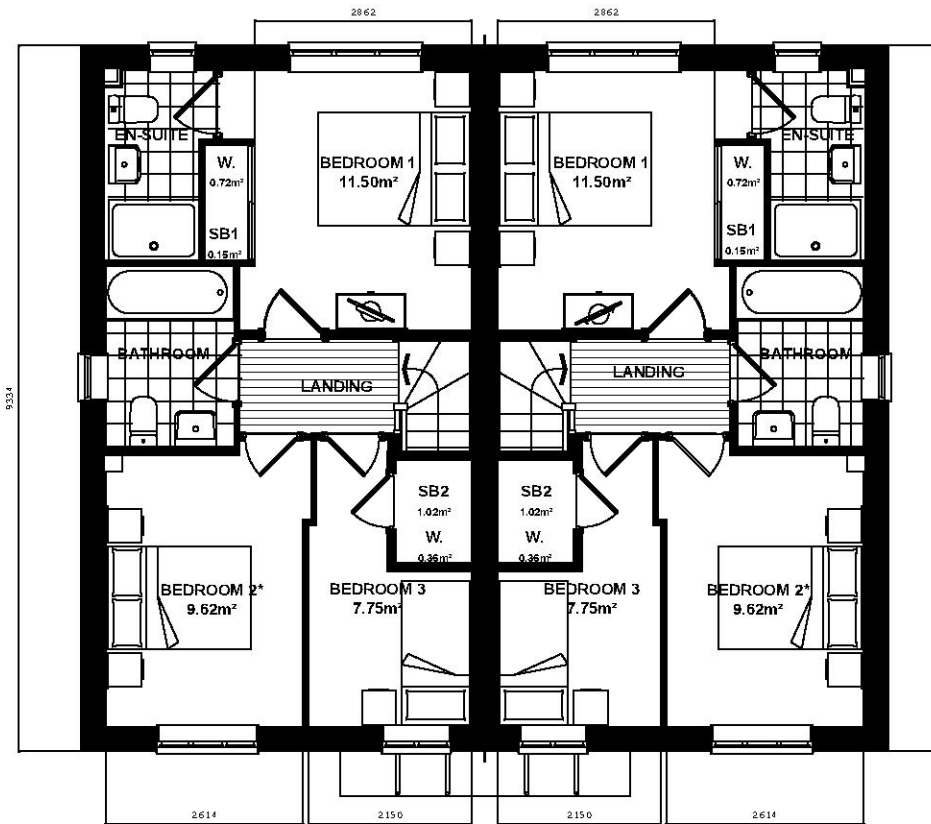
NSS.372 BUXTON



NSS.372-1 BUXTON  
GROUND FLOOR PLAN

NSS.372-1 BUXTON

B BOILER LOCATIONS GF GAS FLOOR BOX LOCATIONS E ELECTRIC METER LOCATIONS C CONSUMER UNIT LOCATIONS



NSS.372-1 BUXTON  
FIRST FLOOR PLAN

NSS.372-1 BUXTON

\* Denotes floor areas shown to comply with National Described Space Standards (see schedule). Room layout shown as furnished and does not demonstrate compliance.

BUXTON - National Space Standards		
	Actual Area	NSS Requirement
Ground Floor Plan	42.00m <sup>2</sup>	
First Floor Plan	42.00m <sup>2</sup>	
Total floor area m <sup>2</sup>	<b>84.00m<sup>2</sup></b>	84.00m <sup>2</sup>
Total floor area ft <sup>2</sup>	904ft <sup>2</sup>	904ft <sup>2</sup>
Bedroom 1	11.50m <sup>2</sup>	11.5m <sup>2</sup>
Bedroom 2	9.62m <sup>2</sup>	7.5m <sup>2</sup>
Bedroom 3	7.75m <sup>2</sup>	7.5m <sup>2</sup>
Store Under Stair	1.32m <sup>2</sup>	
Store Bedroom 1 (SB1)	0.15m <sup>2</sup>	
Store Bedroom 2 (SB2)	1.02m <sup>2</sup>	
<b>Built in store total</b>	<b>2.50m<sup>2</sup></b>	<b>2.5m<sup>2</sup></b>

PEGASUS DRAWING NUMBER:  
P18-2109\_70-07

NOTES:  
DRAWING BASED ON LINEWORK  
PROVIDED BY BLOOR HOMES.  
(DRAWING NO: NSS.372.PL-01)

REFER TO MATERIALS LAYOUT  
FOR INDIVIDUAL PLOT MATERIALS  
INCLUDING DOOR  
COLOURS.(DRAWING NO:  
P18-2109-62-03)

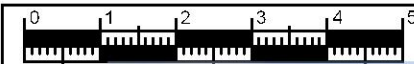
**ISSUE 4**

**Buxton**  
BRICK  
NSS.372.PL-01

DATE: APR 2019 REV:  
SCALE: A3

DRAWN: GSW 85.35m<sup>2</sup>  
CHECKED: GPM 919ft<sup>2</sup>

**BLOOR HOMES**

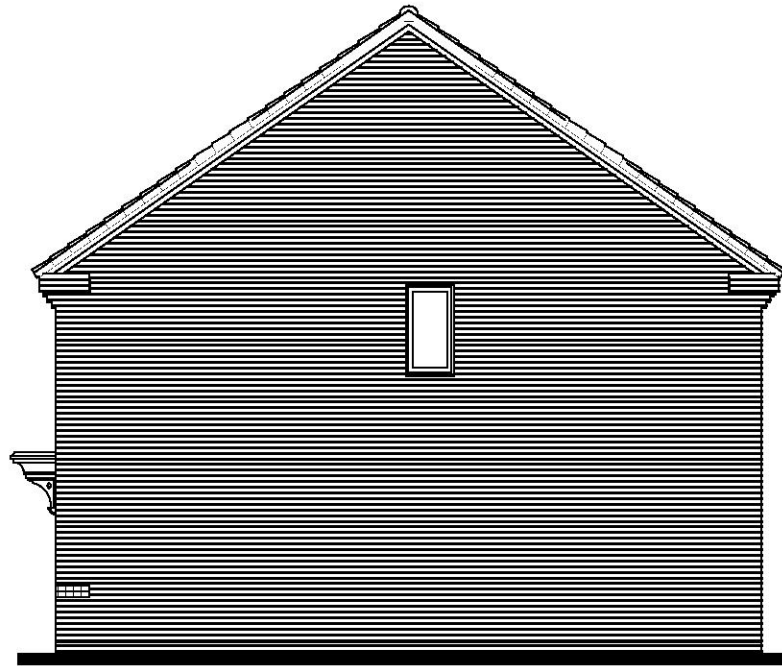


Scale 1:100  
Issue 4

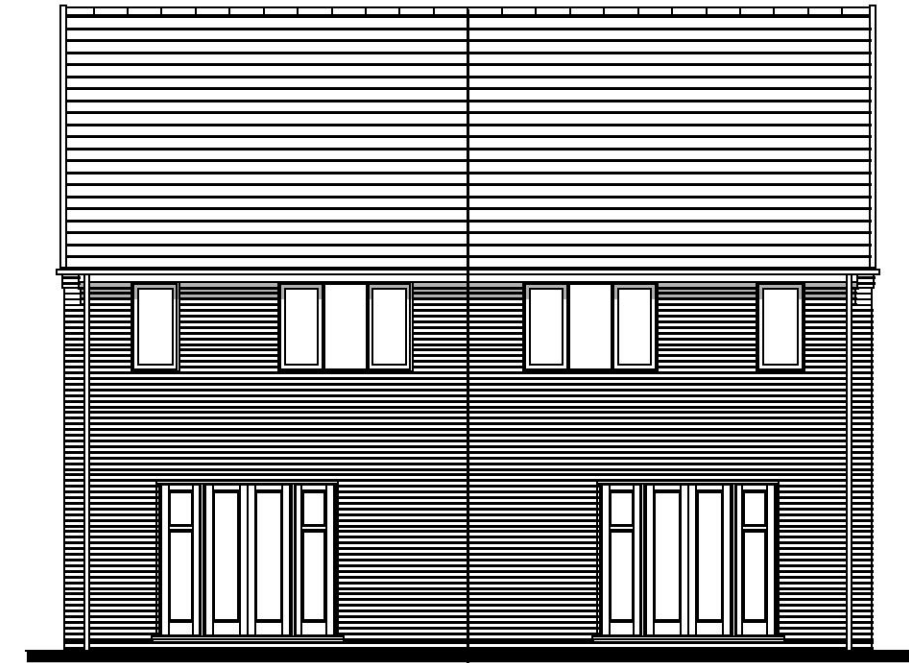


NSS.372 BUXTON  
FRONT ELEVATION

NSS.372-1 BUXTON

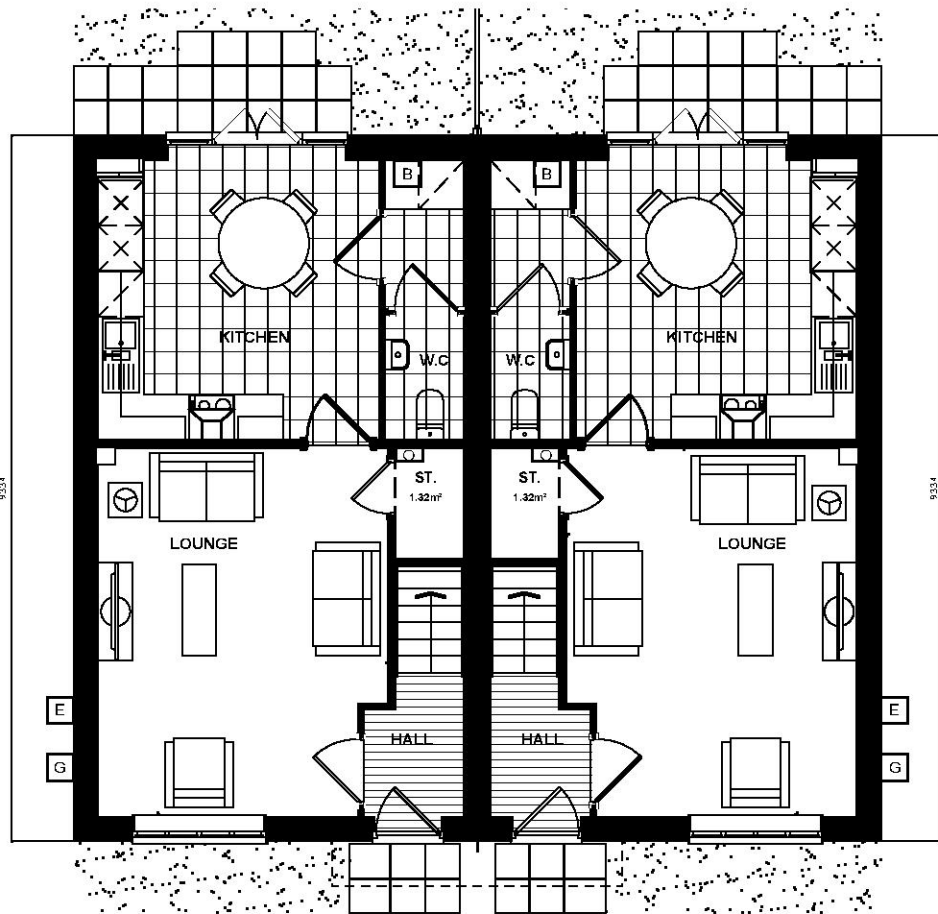


NSS.372-1 BUXTON  
SIDE ELEVATION



NSS.372-1 BUXTON  
REAR ELEVATION

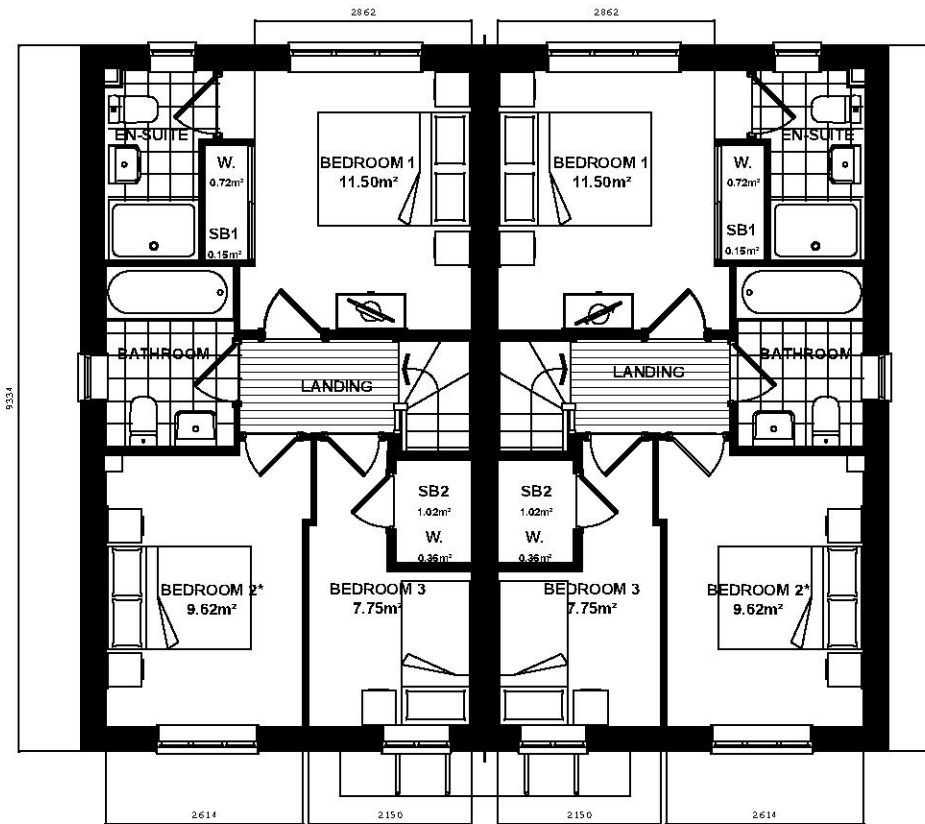
NSS.372 BUXTON



NSS.372-1 BUXTON  
GROUND FLOOR PLAN

NSS.372-1 BUXTON

B BOILER LOCATIONS GF GAS FLOOR BOX LOCATIONS E ELECTRIC METER LOCATIONS C CONSUMER UNIT LOCATIONS



NSS.372-1 BUXTON  
FIRST FLOOR PLAN

NSS.372-1 BUXTON

\* Denotes floor areas shown to comply with National Described Space Standards (see schedule). Room layout shown as furnished and does not demonstrate compliance.

BUXTON - National Space Standards		
	Actual Area	NSS Requirement
Ground Floor Plan	42.00m <sup>2</sup>	
First Floor Plan	42.00m <sup>2</sup>	
Total floor area m <sup>2</sup>	<b>84.00m<sup>2</sup></b>	84.00m <sup>2</sup>
Total floor area ft <sup>2</sup>	904ft <sup>2</sup>	904ft <sup>2</sup>
Bedroom 1	11.50m <sup>2</sup>	11.5m <sup>2</sup>
Bedroom 2	9.62m <sup>2</sup>	7.5m <sup>2</sup>
Bedroom 3	7.75m <sup>2</sup>	7.5m <sup>2</sup>
Store Under Stair	1.32m <sup>2</sup>	
Store Bedroom 1 (SB1)	0.15m <sup>2</sup>	
Store Bedroom 2 (SB2)	1.02m <sup>2</sup>	
<b>Built in store total</b>	<b>2.50m<sup>2</sup></b>	<b>2.5m<sup>2</sup></b>

PEGASUS DRAWING NUMBER:  
P18-2109\_70-08

NOTES:  
DRAWING BASED ON LINEWORK  
PROVIDED BY BLOOR HOMES.  
(DRAWING NO: NSS.372.PL-01)

REFER TO MATERIALS LAYOUT  
FOR INDIVIDUAL PLOT MATERIALS  
INCLUDING DOOR  
COLOURS.(DRAWING NO:  
P18-2109-62-03)

**ISSUE 4**

**Buxton**  
BRICK  
NSS.372.PL-01

DATE: APR 2019 REV:  
SCALE: A3

DRAWN: GSW 85.35m<sup>2</sup>  
CHECKED: GPM 919ft<sup>2</sup>

**BLOOR HOMES**

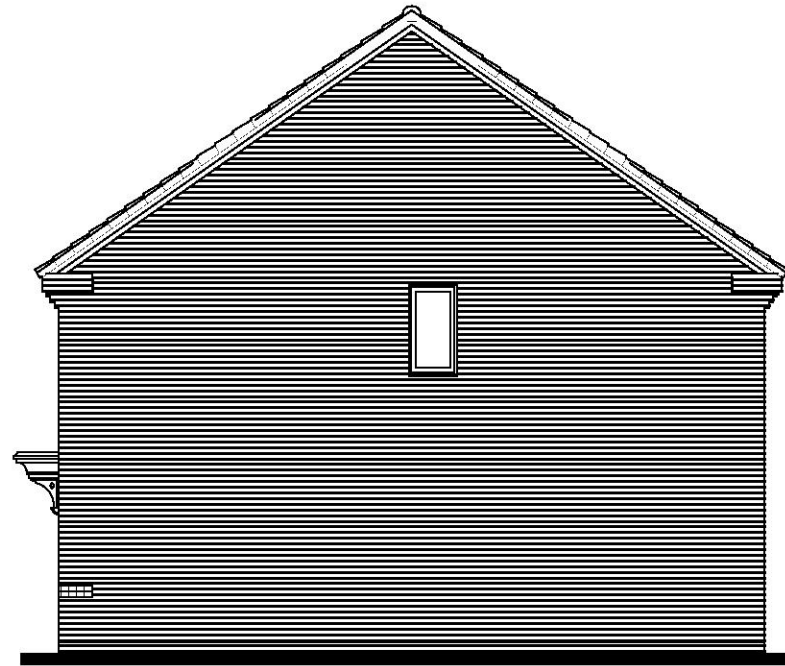


Scale 1:100  
Issue 4

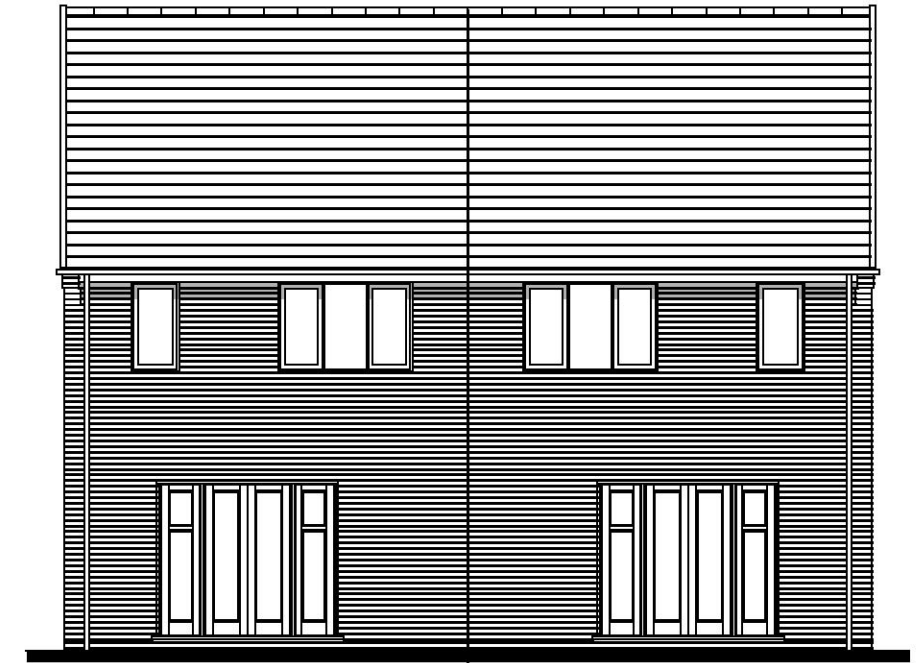


NSS.372 BUXTON  
FRONT ELEVATION

NSS.372-1 BUXTON

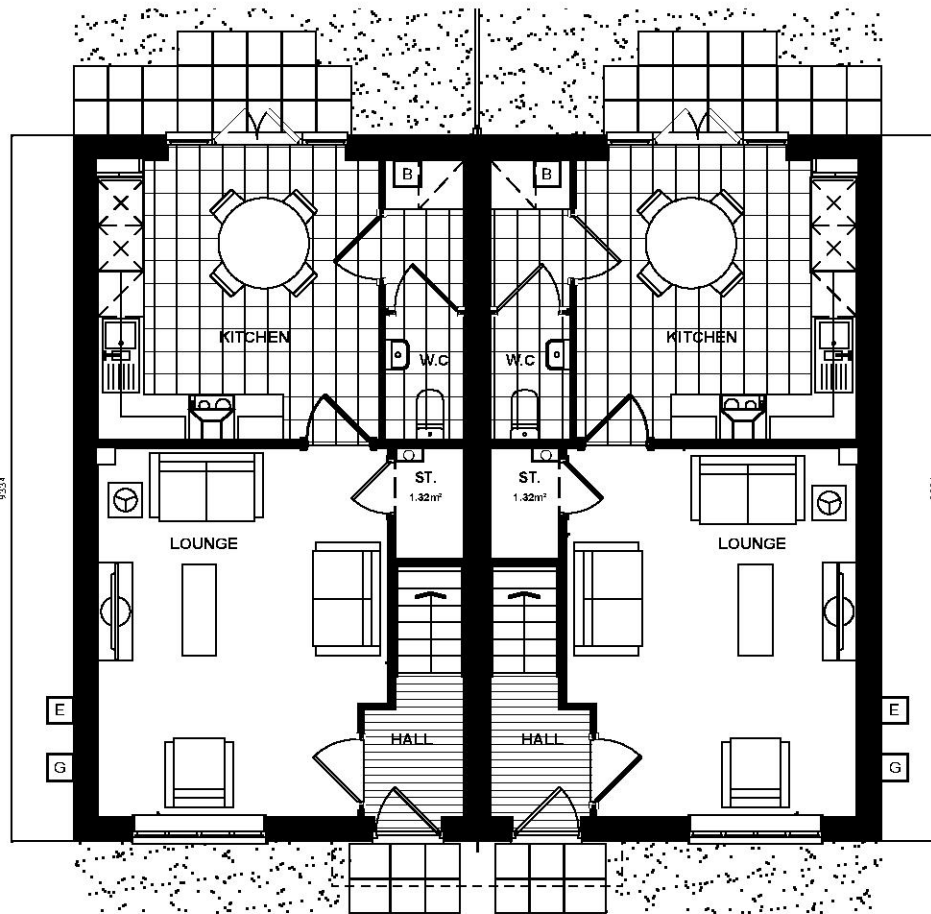


NSS.372-1 BUXTON  
SIDE ELEVATION



NSS.372-1 BUXTON  
REAR ELEVATION

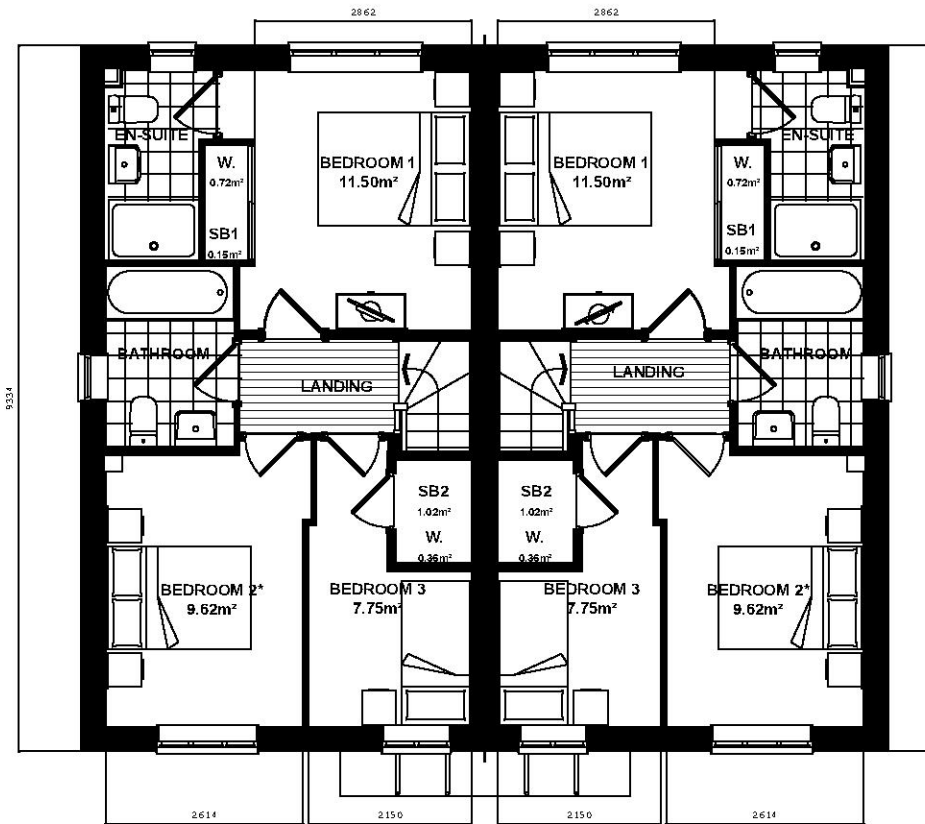
NSS.372 BUXTON



NSS.372-1 BUXTON  
GROUND FLOOR PLAN

NSS.372-1 BUXTON

B BOILER LOCATIONS GF GAS FLOOR BOX LOCATIONS E ELECTRIC METER LOCATIONS C CONSUMER UNIT LOCATIONS



NSS.372-1 BUXTON  
FIRST FLOOR PLAN

NSS.372-1 BUXTON

\* Denotes floor areas shown to comply with National Described Space Standards (see schedule). Room layout shown as furnished and does not demonstrate compliance.

BUXTON - National Space Standards		
	Actual Area	NSS Requirement
Ground Floor Plan	42.00m <sup>2</sup>	
First Floor Plan	42.00m <sup>2</sup>	
Total floor area m <sup>2</sup>	<b>84.00m<sup>2</sup></b>	84.00m <sup>2</sup>
Total floor area ft <sup>2</sup>	904ft <sup>2</sup>	904ft <sup>2</sup>
Bedroom 1	11.50m <sup>2</sup>	11.5m <sup>2</sup>
Bedroom 2	9.62m <sup>2</sup>	7.5m <sup>2</sup>
Bedroom 3	7.75m <sup>2</sup>	7.5m <sup>2</sup>
Store Under Stair	1.32m <sup>2</sup>	
Store Bedroom 1 (SB1)	0.15m <sup>2</sup>	
Store Bedroom 2 (SB2)	1.02m <sup>2</sup>	
<b>Built in store total</b>	<b>2.50m<sup>2</sup></b>	<b>2.5m<sup>2</sup></b>

PEGASUS DRAWING NUMBER:  
P18-2109\_70-09

NOTES:  
DRAWING BASED ON LINEWORK  
PROVIDED BY BLOOR HOMES.  
(DRAWING NO: NSS.372.PL-01)

REFER TO MATERIALS LAYOUT  
FOR INDIVIDUAL PLOT MATERIALS  
INCLUDING DOOR  
COLOURS.(DRAWING NO:  
P18-2109-62-03)

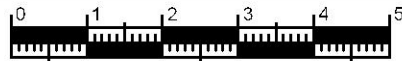
**ISSUE 4**

**Buxton**  
BRICK  
NSS.372.PL-01

DATE: APR 2019 REV:  
SCALE: A3

DRAWN: GSW 85.35m<sup>2</sup>  
CHECKED: GPM 919ft<sup>2</sup>

**BLOOR HOMES**

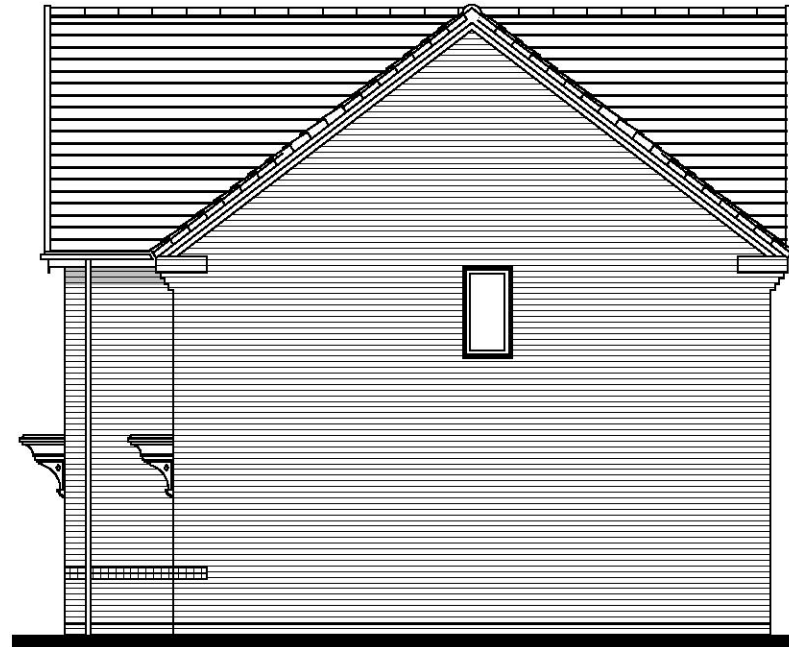


Scale 1:100  
Issue 4



**NSS.373 BUXTON  
FRONT ELEVATION**

**NSS.277-1 DEKKER**

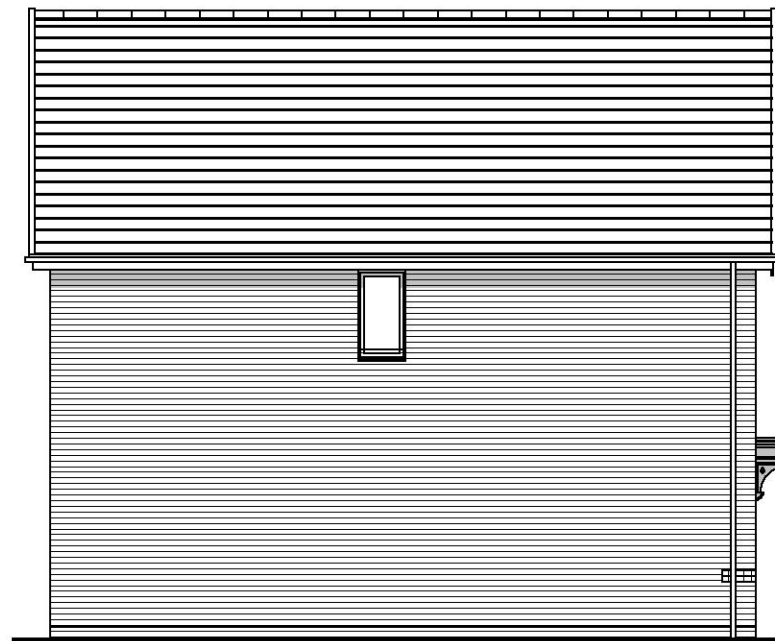


**NSS.277-1  
SIDE ELEVATION**



**NSS.277-1  
REAR ELEVATION**

**NSS.373 BUXTON**



**NSS.373 BUXTON  
SIDE ELEVATION**

PEGASUS DRAWING NUMBER:  
P18-2109-70\_10

**NOTES:**  
DRAWING BASED ON LINEWORK  
PROVIDED BY BLOOR HOMES.  
(DRAWING NO:  
NSS.373\_NSS.277-1.PL01)

REFER TO MATERIALS LAYOUT  
FOR INDIVIDUAL PLOT MATERIALS  
INCLUDING DOOR  
COLOURS.(DRAWING NO:  
P18-2109-62-03)

## Buxton Dekker BRICK

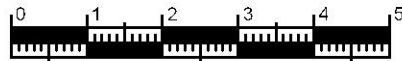
NSS.373\_NSS.277-1.PL-02

DATE: **SEPT 2020**      REV:  
SCALE: **A3**

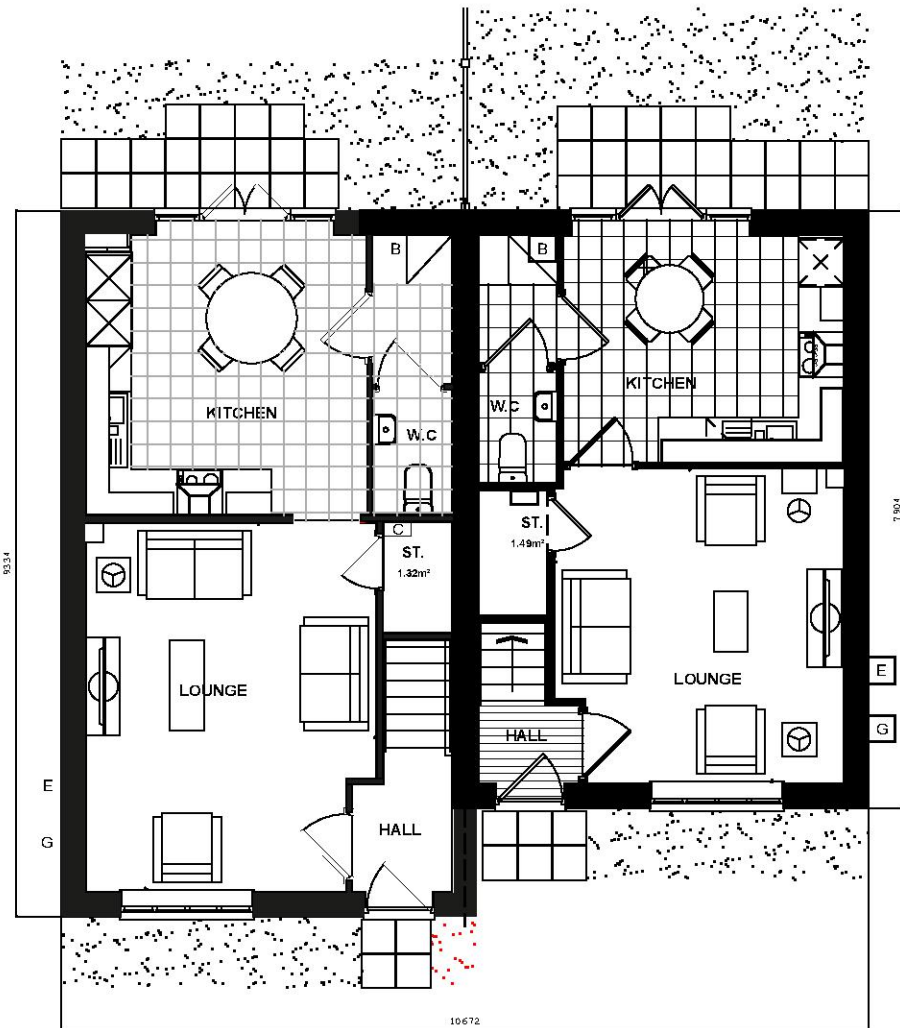
DRAWN: AT      84m<sup>2</sup> & 70m<sup>2</sup>  
CHECKED: EH      904ft<sup>2</sup> & 753ft<sup>2</sup>

# ISSUE 4

# BLOOR HOMES



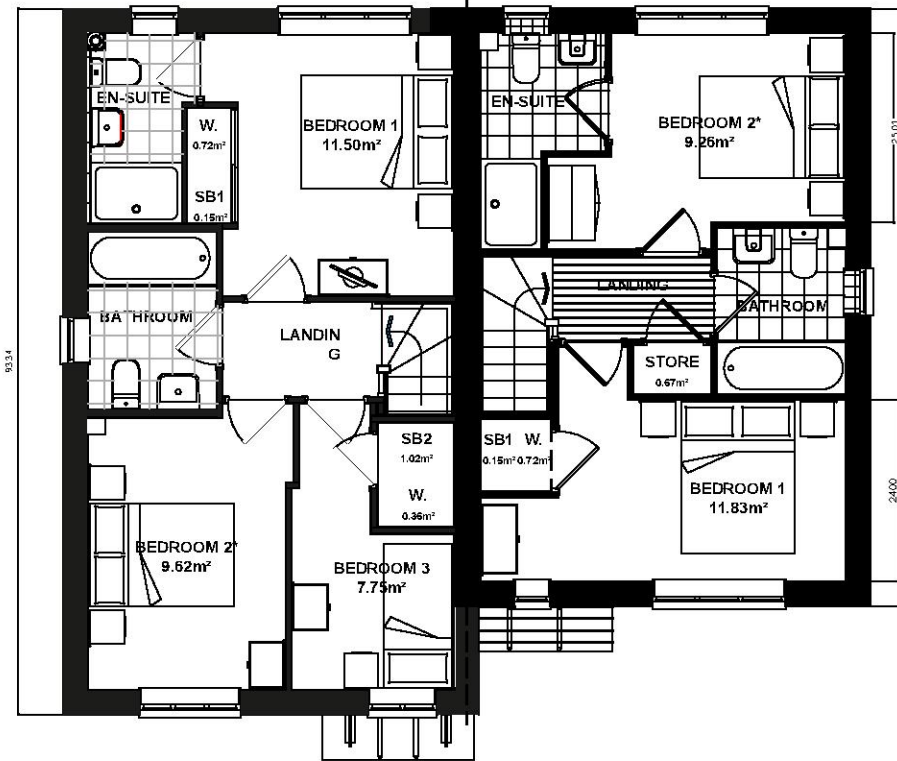
Scale 1:100  
Issue 4



NSS.373 BUXTON

NSS.277-1 CHANDLER

B BOILER LOCATION E ELECTRIC METER LOCATION G GAS METER LOCATION C CONSUMER UNIT LOCATION



NSS.373 BUXTON  
FIRST FLOOR PLAN

NSS.277-1 DEKKER

PEGASUS DRAWING NUMBER:  
P18-2109-70\_11

**NOTES:**  
DRAWING BASED ON LINEWORK  
PROVIDED BY BLOOR HOMES.  
(DRAWING NO:  
NSS.373\_NSS.277-1.PL01)

REFER TO MATERIALS LAYOUT  
FOR INDIVIDUAL PLOT MATERIALS  
INCLUDING DOOR  
COLOURS.(DRAWING NO:  
P18-2109-62-03)

**ISSUE 4**

National Space Standards - NSS.373		
3B4P	Actual Area	NSS Requirement
Ground Floor Plan	42.00m <sup>2</sup>	
First Floor Plan	42.00m <sup>2</sup>	
Total floor area m <sup>2</sup>	<b>84.00m<sup>2</sup></b>	84.00m <sup>2</sup>
Total floor area ft <sup>2</sup>	904ft <sup>2</sup>	904ft <sup>2</sup>
Bedroom 1	11.50m <sup>2</sup>	11.5m <sup>2</sup>
Bedroom 2	9.62m <sup>2</sup>	7.5m <sup>2</sup>
Bedroom 3	7.75m <sup>2</sup>	7.5m <sup>2</sup>
Store Under Stair	1.32m <sup>2</sup>	
Store Bedroom 1 (SB1)	0.15m <sup>2</sup>	
Store Bedroom 2 (SB2)	1.02m <sup>2</sup>	
<b>Built in store total</b>	<b>2.50m<sup>2</sup></b>	<b>2.5m<sup>2</sup></b>

National Space Standards - NSS.277		
2B3P	Actual Area	NSS Requirement
Ground Floor Plan	35.00m <sup>2</sup>	
First Floor Plan	35.00m <sup>2</sup>	
Total Floor Area m <sup>2</sup>	<b>70.00m<sup>2</sup></b>	70.00m <sup>2</sup>
Total Floor Area ft <sup>2</sup>	753ft <sup>2</sup>	753ft <sup>2</sup>
Bedroom 2	9.26m <sup>2</sup>	7.5m <sup>2</sup>
Bedroom 1	11.83m <sup>2</sup>	11.5m <sup>2</sup>
Store Under Stair	1.49m <sup>2</sup>	
Store Bedroom 1	0.67m <sup>2</sup>	
Store Bulkhead	0.15m <sup>2</sup>	
<b>Built in Store Total</b>	<b>2.31m<sup>2</sup></b>	<b>2.0m<sup>2</sup></b>

**Buxton Dekker  
BRICK**

NSS.373\_NSS.277-1.PL-01

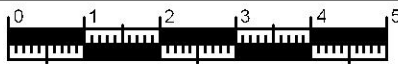
DATE: SEPT 2020 REV:

SCALE: A3

DRAWN: AT 84m<sup>2</sup> & 70m<sup>2</sup>

CHECKED: EH 904ft<sup>2</sup> & 753ft<sup>2</sup>

**BLOOR HOMES**

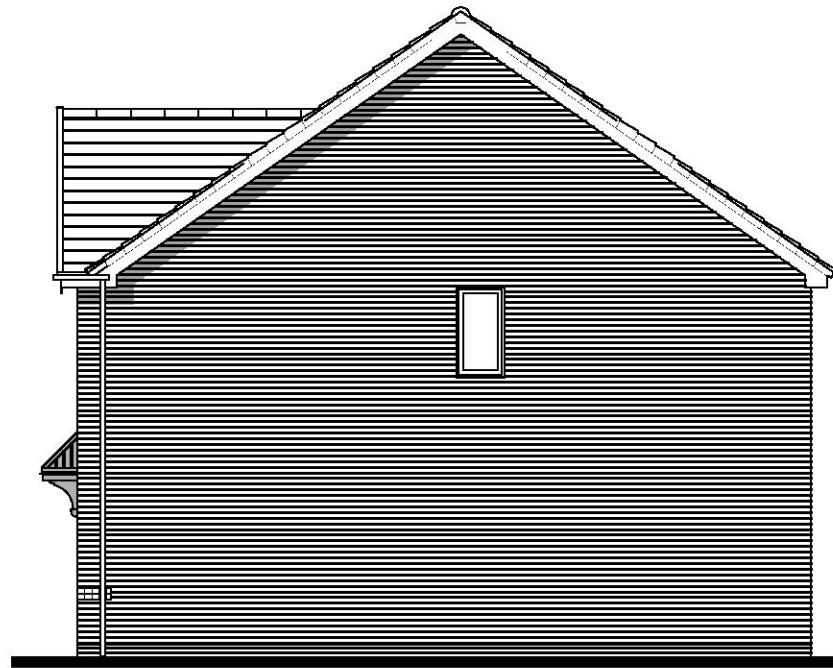


Scale 1:100  
Issue 4



NSS.378 KANE  
FRONT ELEVATION

NSS.378-1 KANE

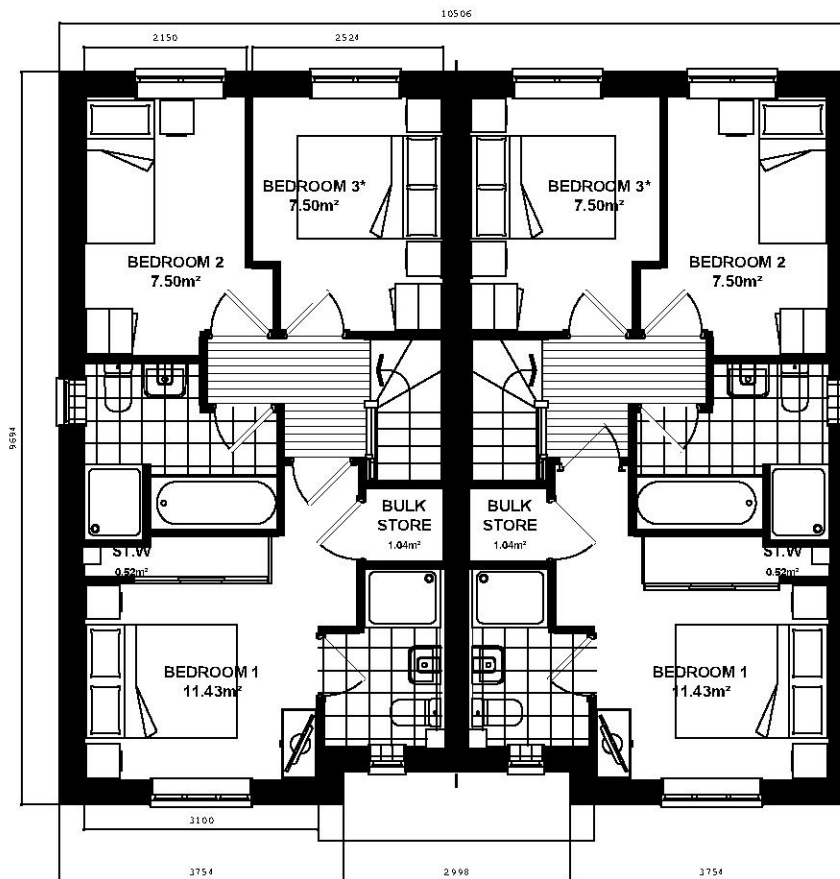
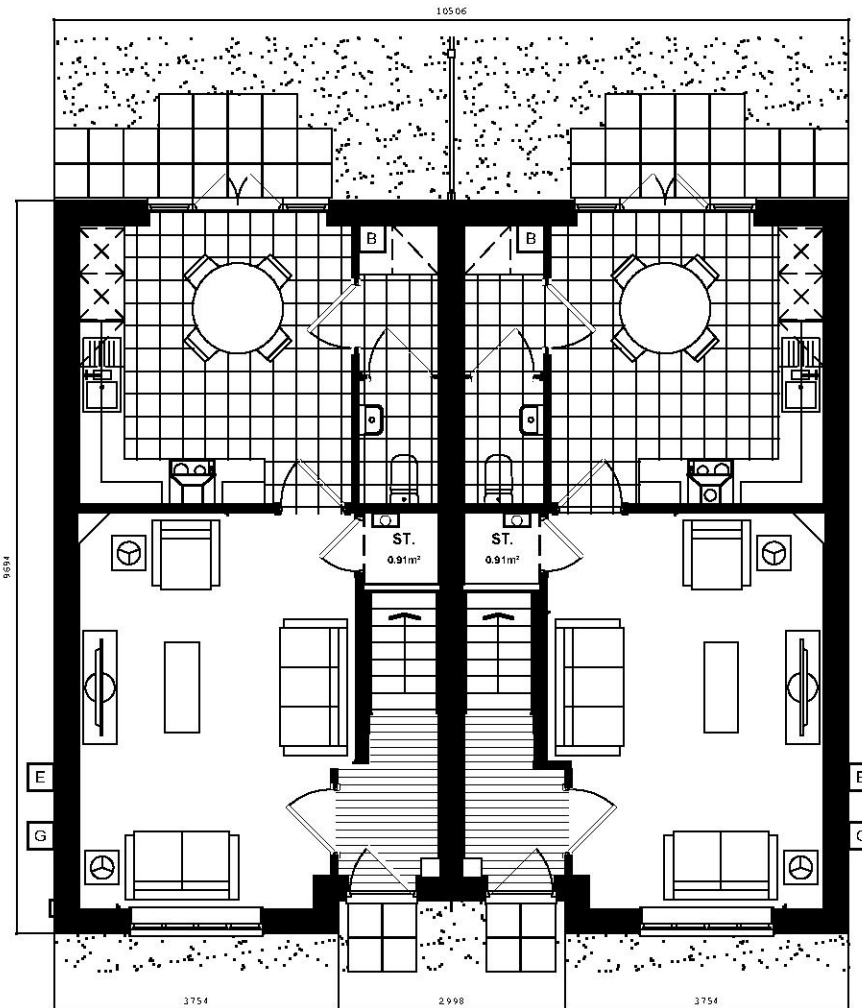


NSS.378-1 KANE  
SIDE ELEVATION



NSS.378-1 KANE  
REAR ELEVATION

NSS.378 KANE



National Space Standards		
3B4P	Actual Area	NSS Requirement
Ground Floor Plan	42.21m <sup>2</sup>	
First Floor Plan	42.21m <sup>2</sup>	
<b>Total Floor Area m<sup>2</sup></b>	<b>84.43m<sup>2</sup></b>	84.00m <sup>2</sup>
<b>Total Floor Area ft<sup>2</sup></b>	<b>909ft<sup>2</sup></b>	904ft <sup>2</sup>
Bedroom 1	11.43m <sup>2</sup>	11.5m <sup>2</sup>
Bedroom 2	7.50m <sup>2</sup>	7.5m <sup>2</sup>
Bedroom 3	7.50m <sup>2</sup>	7.5m <sup>2</sup>
Store Under Stair	0.91m <sup>2</sup>	
Store (Bulk)	1.04m <sup>2</sup>	
Store (Wardrobe)	0.52m <sup>2</sup>	
<b>Built in Store Total</b>	<b>2.47m<sup>2</sup></b>	<b>2.5m<sup>2</sup></b>

PEGASUS DRAWING NUMBER:  
P18-2109-70\_12

**NOTES:**

DRAWING BASED ON LINEWORK  
PROVIDED BY BLOOR HOMES.  
[DRAWING NO:  
NSS.378\_NSS.378-1.PL01]

REFER TO MATERIALS LAYOUT  
FOR INDIVIDUAL PLOT  
MATERIALS INCLUDING DOOR  
COLOURS.[DRAWING NO:  
P18-2109-62-03]

**Kane**  
BRICK  
NSS.378\_378-1.PL-01

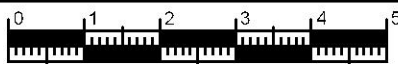
DATE: JUNE 2019 REV:  
SCALE: A3

DRAWN: vo 85.81m<sup>2</sup>  
CHECKED: TP 924ft<sup>2</sup>

**ISSUE 4**

**BLOOR HOMES**

B BOILER LOCATION GF GAS FLOOR BOX LOCATION E ELECTRIC METER LOCATION C CONSUMER UNIT LOCATION



Scale 1:100  
Issue 4



NSS.378 KANE  
FRONT ELEVATION

NSS.378-1 KANE

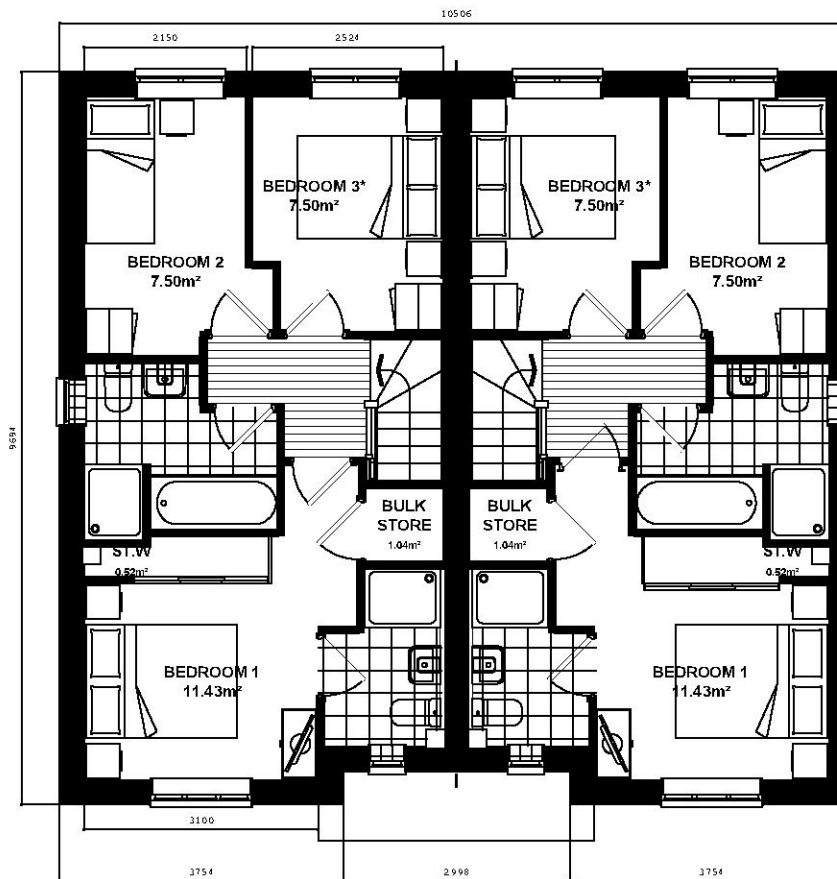
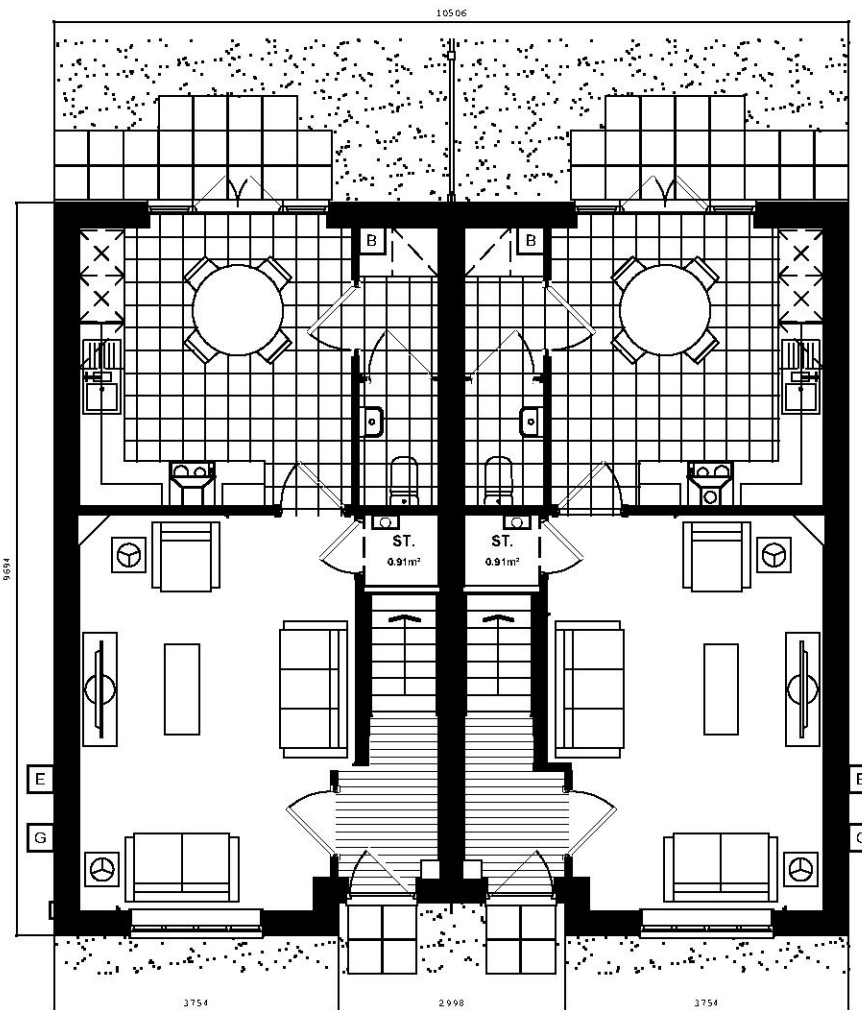


NSS.378-1 KANE  
SIDE ELEVATION



NSS.378-1 KANE  
REAR ELEVATION

NSS.378 KANE



National Space Standards		
3B4P	Actual Area	NSS Requirement
Ground Floor Plan	42.21m <sup>2</sup>	
First Floor Plan	42.21m <sup>2</sup>	
<b>Total Floor Area m<sup>2</sup></b>	<b>84.43m<sup>2</sup></b>	84.00m <sup>2</sup>
<b>Total Floor Area ft<sup>2</sup></b>	<b>909ft<sup>2</sup></b>	904ft <sup>2</sup>
Bedroom 1	11.43m <sup>2</sup>	11.5m <sup>2</sup>
Bedroom 2	7.50m <sup>2</sup>	7.5m <sup>2</sup>
Bedroom 3	7.50m <sup>2</sup>	7.5m <sup>2</sup>
Store Under Stair	0.91m <sup>2</sup>	
Store (Bulk)	1.04m <sup>2</sup>	
Store (Wardrobe)	0.52m <sup>2</sup>	
<b>Built in Store Total</b>	<b>2.47m<sup>2</sup></b>	<b>2.5m<sup>2</sup></b>

PEGASUS DRAWING NUMBER:  
P18-2109-70\_13

**NOTES:**

DRAWING BASED ON LINEWORK  
PROVIDED BY BLOOR HOMES.  
(DRAWING NO:  
NSS.378\_NSS.378-1.PL01)

REFER TO MATERIALS LAYOUT  
FOR INDIVIDUAL PLOT  
MATERIALS INCLUDING DOOR  
COLOURS.(DRAWING NO:  
P18-2109-62-03)

**Kane**  
BRICK  
NSS.378\_378-1.PL-01

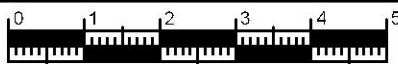
DATE: JUNE 2019 REV:  
SCALE: A3

DRAWN: vo 85.81m<sup>2</sup>  
CHECKED: TP 924ft<sup>2</sup>

**ISSUE 4**

**BLOOR HOMES**

B BOILER LOCATION GF GAS FLOOR BOX LOCATION E ELECTRIC METER LOCATION C CONSUMER UNIT LOCATION

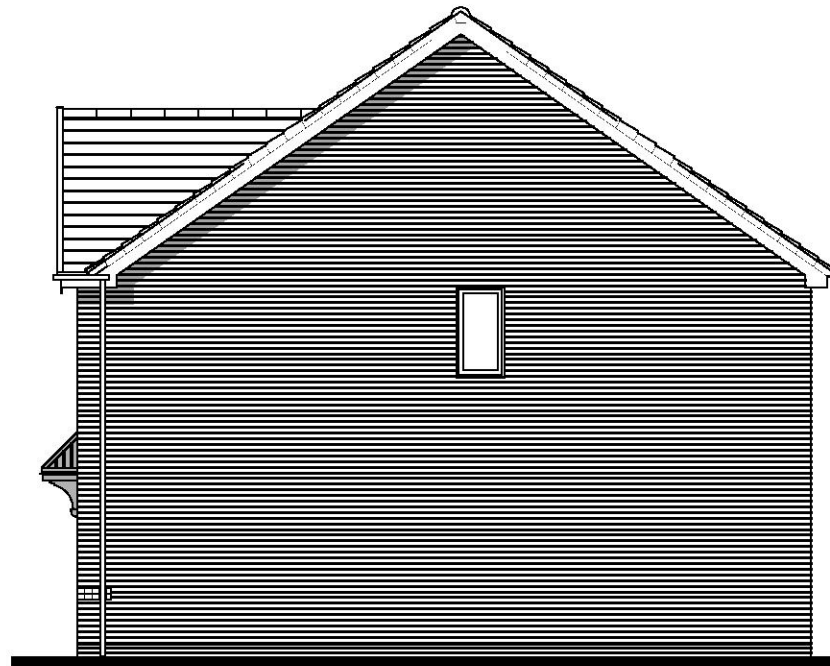


Scale 1:100  
Issue 4



NSS.378 KANE  
FRONT ELEVATION

NSS.378-1 KANE

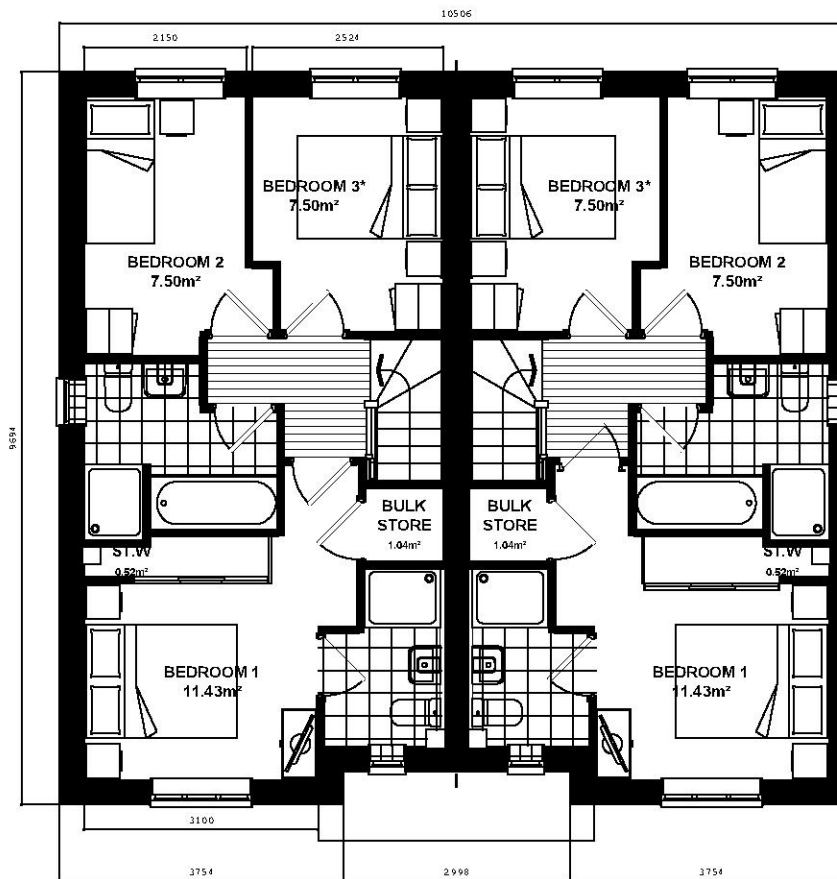
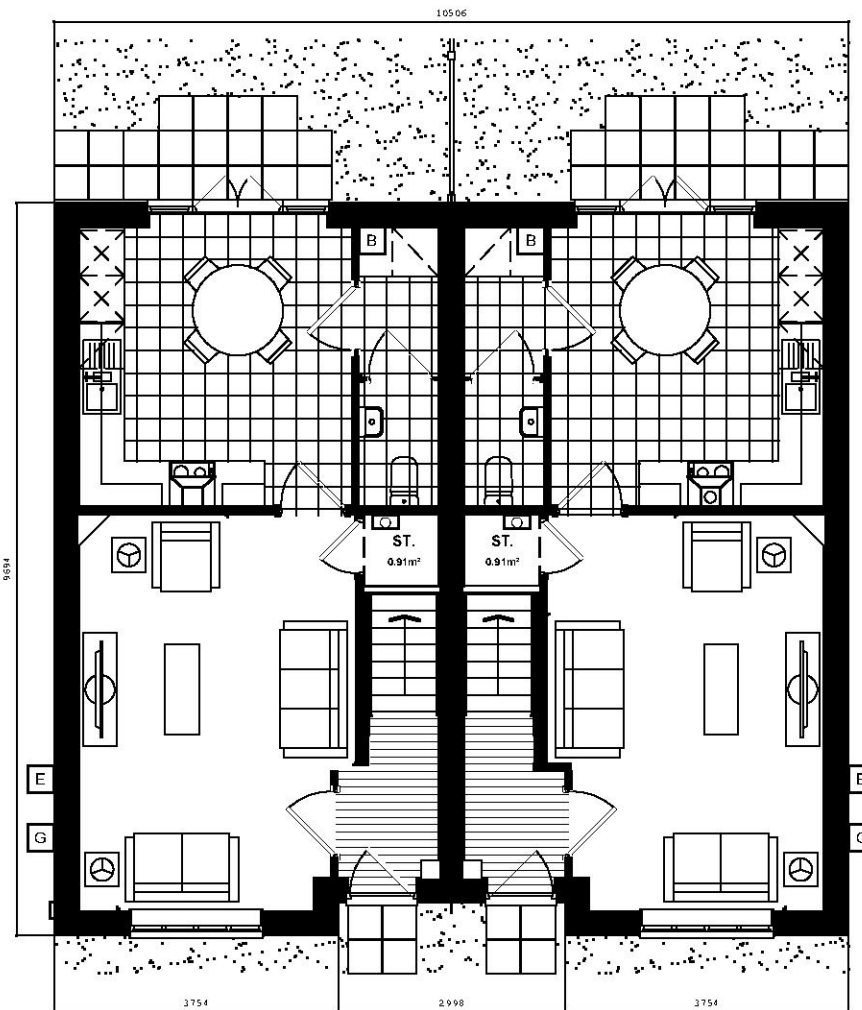


NSS.378-1 KANE  
SIDE ELEVATION



NSS.378-1 KANE  
REAR ELEVATION

NSS.378 KANE



National Space Standards		
3B4P	Actual Area	NSS Requirement
Ground Floor Plan	42.21m <sup>2</sup>	
First Floor Plan	42.21m <sup>2</sup>	
<b>Total Floor Area m<sup>2</sup></b>	<b>84.43m<sup>2</sup></b>	84.00m <sup>2</sup>
<b>Total Floor Area ft<sup>2</sup></b>	<b>909ft<sup>2</sup></b>	904ft <sup>2</sup>
Bedroom 1	11.43m <sup>2</sup>	11.5m <sup>2</sup>
Bedroom 2	7.50m <sup>2</sup>	7.5m <sup>2</sup>
Bedroom 3	7.50m <sup>2</sup>	7.5m <sup>2</sup>
Store Under Stair	0.91m <sup>2</sup>	
Store (Bulk)	1.04m <sup>2</sup>	
Store (Wardrobe)	0.52m <sup>2</sup>	
<b>Built in Store Total</b>	<b>2.47m<sup>2</sup></b>	<b>2.5m<sup>2</sup></b>

PEGASUS DRAWING NUMBER:  
P18-2109-70\_14

**NOTES:**

DRAWING BASED ON LINEWORK  
PROVIDED BY BLOOR HOMES.  
[DRAWING NO:  
NSS.378\_NSS.378-1.PL01]

REFER TO MATERIALS LAYOUT  
FOR INDIVIDUAL PLOT  
MATERIALS INCLUDING DOOR  
COLOURS.[DRAWING NO:  
P18-2109-62-03]

**Kane**  
BRICK  
NSS.378\_378-1.PL-01

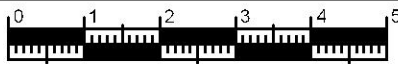
DATE: JUNE 2019 REV:  
SCALE: A3

DRAWN: vo 85.81m<sup>2</sup>  
CHECKED: TP 924ft<sup>2</sup>

**ISSUE 4**

**BLOOR HOMES**

B BOILER LOCATION GF GAS FLOOR BOX LOCATION E ELECTRIC METER LOCATION C CONSUMER UNIT LOCATION



Scale 1:100  
Issue 4



NSS.375  
FRONT ELEVATION



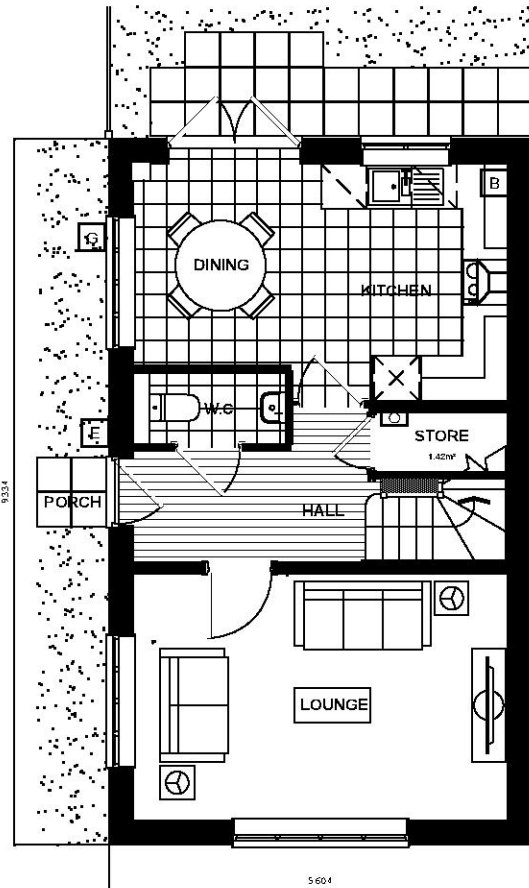
NSS.375  
SIDE ELEVATION



NSS.375  
REAR ELEVATION

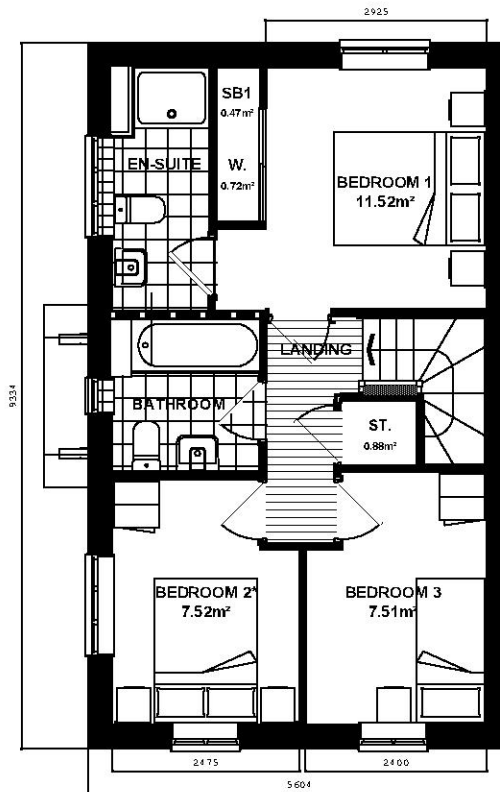


NSS.375  
SIDE ELEVATION



NSS.375  
GROUND FLOOR PLAN

**B** BOILER LOCATION      **E** ELECTRIC METER LOCATION  
**G** GAS METER LOCATION      **C** CONSUMER UNIT LOCATION



NSS.375  
FIRST FLOOR PLAN

\* Denotes floor areas shown to comply with National Described Space Standards (see schedule). Room layout shown as furnished and does not demonstrate compliance.

PEGASUS DRAWING NUMBER:  
P18-210-70\_15

**NOTES:**

DRAWING BASED ON LINEWORK PROVIDED BY BLOOR HOMES. (DRAWING NO: NSS.375.PL-01)

REFER TO MATERIALS LAYOUT FOR INDIVIDUAL PLOT MATERIALS INCLUDING DOOR COLOURS. (DRAWING NO: P18-2109-62-03)

**ISSUE 4**

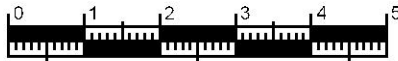
National Space Standards		
3B4P	Actual Area	NSS Requirement
Ground Floor Plan	42.97m <sup>2</sup>	
First Floor Plan	42.97m <sup>2</sup>	
Total floor area m <sup>2</sup>	<b>85.93m<sup>2</sup></b>	84.00m <sup>2</sup>
Total floor area ft <sup>2</sup>	925ft <sup>2</sup>	904ft <sup>2</sup>
Bedroom 1	11.52m <sup>2</sup>	11.5m <sup>2</sup>
Bedroom 2	7.52m <sup>2</sup>	7.5m <sup>2</sup>
Bedroom 3	7.51m <sup>2</sup>	7.5m <sup>2</sup>
Store Under Stair	1.42m <sup>2</sup>	
Store Landing	0.88m <sup>2</sup>	
Store Bedroom 1	0.47m <sup>2</sup>	
<b>Built in store total</b>	<b>2.77m<sup>2</sup></b>	<b>2.5m<sup>2</sup></b>

**Lawrence**  
BRICK  
NSS.375.PL-01

DATE: SEPT 2019      REV:  
SCALE: A3

DRAWN: DRW      87.30m<sup>2</sup>  
CHECKED: GPM      940ft<sup>2</sup>

**BLOOR HOMES**



Scale 1:100  
Issue 4

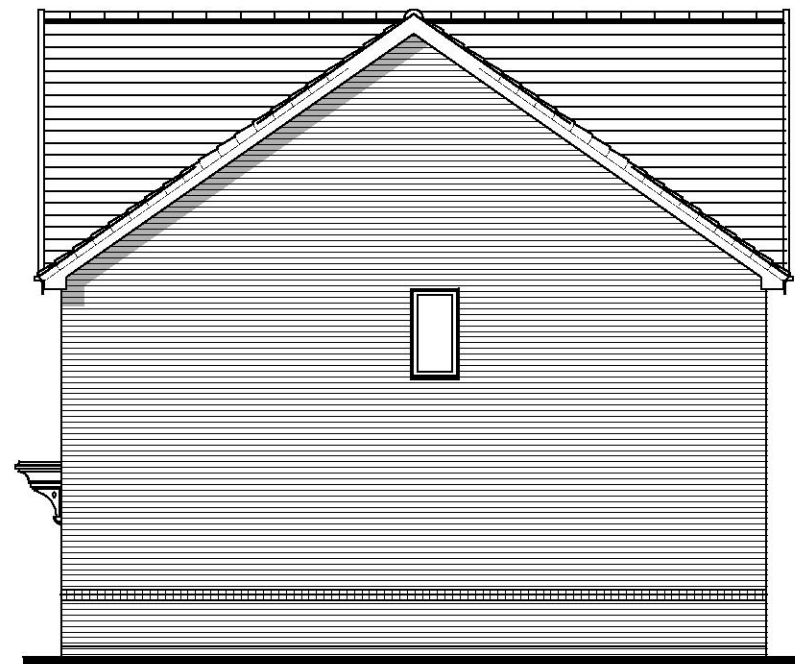


**NSS.376 LAWRENCE  
SIDE ELEVATION**



**NSS.376 LAWRENCE  
FRONT ELEVATION**

**NSS.372-1 BUXTON**



**NSS.372-1 BUXTON  
SIDE ELEVATION**



**NSS.372-1 BUXTON  
REAR ELEVATION**

**NSS.376 LAWRENCE**

PEGASUS DRAWING NUMBER:  
P18-2109-70\_16

**NOTES:**

DRAWING BASED ON LINEWORK  
PROVIDED BY BLOOR HOMES.  
[DRAWING NO: NSS.807.PL-01]

REFER TO MATERIALS LAYOUT  
FOR INDIVIDUAL PLOT  
MATERIALS INCLUDING DOOR  
COLOURS. [DRAWING NO:  
P18-2109-62-03]

**ISSUE 4**

LAWRENCE - National Space Standards		
3B4P	Actual Area	NSS Requirement
Ground Floor Plan	42.97m <sup>2</sup>	
First Floor Plan	42.97m <sup>2</sup>	
Total floor area m <sup>2</sup>	<b>85.93m<sup>2</sup></b>	84.00m <sup>2</sup>
Total floor area ft <sup>2</sup>	925ft <sup>2</sup>	904ft <sup>2</sup>
Bedroom 1	11.52m <sup>2</sup>	11.5m <sup>2</sup>
Bedroom 2	7.52m <sup>2</sup>	7.5m <sup>2</sup>
Bedroom 3	7.51m <sup>2</sup>	7.5m <sup>2</sup>
Store Under Stair	1.42m <sup>2</sup>	
Store Landing	0.88m <sup>2</sup>	
Store Bedroom 1 (SB1)	0.47m <sup>2</sup>	
<b>Built in store total</b>	<b>2.77m<sup>2</sup></b>	<b>2.5m<sup>2</sup></b>

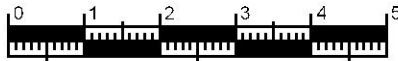
BUXTON - National Space Standards		
3B4P	Actual Area	NSS Requirement
Ground Floor Plan	42.00m <sup>2</sup>	
First Floor Plan	42.00m <sup>2</sup>	
Total floor area m <sup>2</sup>	<b>84.00m<sup>2</sup></b>	84.00m <sup>2</sup>
Total floor area ft <sup>2</sup>	904ft <sup>2</sup>	904ft <sup>2</sup>
Bedroom 1	11.50m <sup>2</sup>	11.5m <sup>2</sup>
Bedroom 2	9.62m <sup>2</sup>	7.5m <sup>2</sup>
Bedroom 3	7.75m <sup>2</sup>	7.5m <sup>2</sup>
Store Under Stair	1.32m <sup>2</sup>	
Store Bedroom 1 (SB1)	0.15m <sup>2</sup>	
Store Bedroom 2 (SB2)	1.02m <sup>2</sup>	
<b>Built in store total</b>	<b>2.50m<sup>2</sup></b>	<b>2.5m<sup>2</sup></b>

**Lawrence Buxton  
BRICK  
NSS.807.PL-01**

DATE: APR 2019 REV:  
SCALE: 1:100 @ A3

DRAWN: GW 87.30 / 85.35m<sup>2</sup>  
CHECKED: GPM 940 / 919 ft<sup>2</sup>

**BLOOR HOMES**



Scale 1:100  
Issue 4

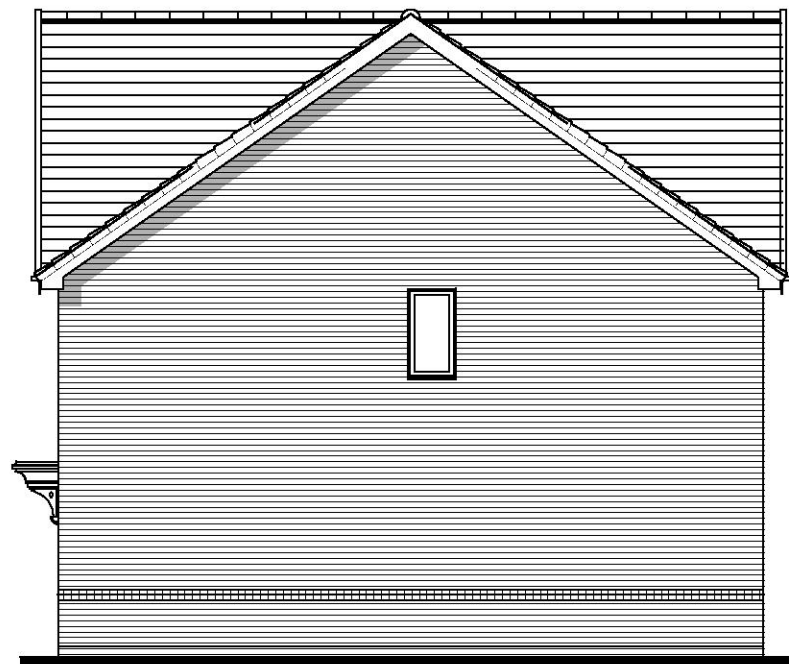


NSS.376 LAWRENCE  
SIDE ELEVATION



NSS.376 LAWRENCE  
FRONT ELEVATION

NSS.372-1 BUXTON



NSS.372-1 BUXTON  
SIDE ELEVATION



NSS.372-1 BUXTON  
REAR ELEVATION

NSS.376 LAWRENCE

PEGASUS DRAWING NUMBER:  
P18-2109-70\_17

**NOTES:**

DRAWING BASED ON LINEWORK  
PROVIDED BY BLOOR HOMES.  
[DRAWING NO: NSS.807.PL-01]

REFER TO MATERIALS LAYOUT  
FOR INDIVIDUAL PLOT  
MATERIALS INCLUDING DOOR  
COLOURS. [DRAWING NO:  
P18-2109-62-03]

**ISSUE 4**

LAWRENCE - National Space Standards		
3B4P	Actual Area	NSS Requirement
Ground Floor Plan	42.97m <sup>2</sup>	
First Floor Plan	42.97m <sup>2</sup>	
Total floor area m <sup>2</sup>	<b>85.93m<sup>2</sup></b>	84.00m <sup>2</sup>
Total floor area ft <sup>2</sup>	925ft <sup>2</sup>	904ft <sup>2</sup>
Bedroom 1	11.52m <sup>2</sup>	11.5m <sup>2</sup>
Bedroom 2	7.52m <sup>2</sup>	7.5m <sup>2</sup>
Bedroom 3	7.51m <sup>2</sup>	7.5m <sup>2</sup>
Store Under Stair	1.42m <sup>2</sup>	
Store Landing	0.88m <sup>2</sup>	
Store Bedroom 1 (SB1)	0.47m <sup>2</sup>	
<b>Built in store total</b>	<b>2.77m<sup>2</sup></b>	<b>2.5m<sup>2</sup></b>

BUXTON - National Space Standards		
3B4P	Actual Area	NSS Requirement
Ground Floor Plan	42.00m <sup>2</sup>	
First Floor Plan	42.00m <sup>2</sup>	
Total floor area m <sup>2</sup>	<b>84.00m<sup>2</sup></b>	84.00m <sup>2</sup>
Total floor area ft <sup>2</sup>	904ft <sup>2</sup>	904ft <sup>2</sup>
Bedroom 1	11.50m <sup>2</sup>	11.5m <sup>2</sup>
Bedroom 2	9.62m <sup>2</sup>	7.5m <sup>2</sup>
Bedroom 3	7.75m <sup>2</sup>	7.5m <sup>2</sup>
Store Under Stair	1.32m <sup>2</sup>	
Store Bedroom 1 (SB1)	0.15m <sup>2</sup>	
Store Bedroom 2 (SB2)	1.02m <sup>2</sup>	
<b>Built in store total</b>	<b>2.50m<sup>2</sup></b>	<b>2.5m<sup>2</sup></b>

**Lawrence Buxton  
BRICK  
NSS.807.PL-01**

DATE: APR 2019 REV:  
SCALE: 1:100 @ A3

DRAWN: GW 87.30 / 85.35m<sup>2</sup>  
CHECKED: GPM 940 / 919 ft<sup>2</sup>

**BLOOR HOMES**



Scale 1:100  
Issue 4

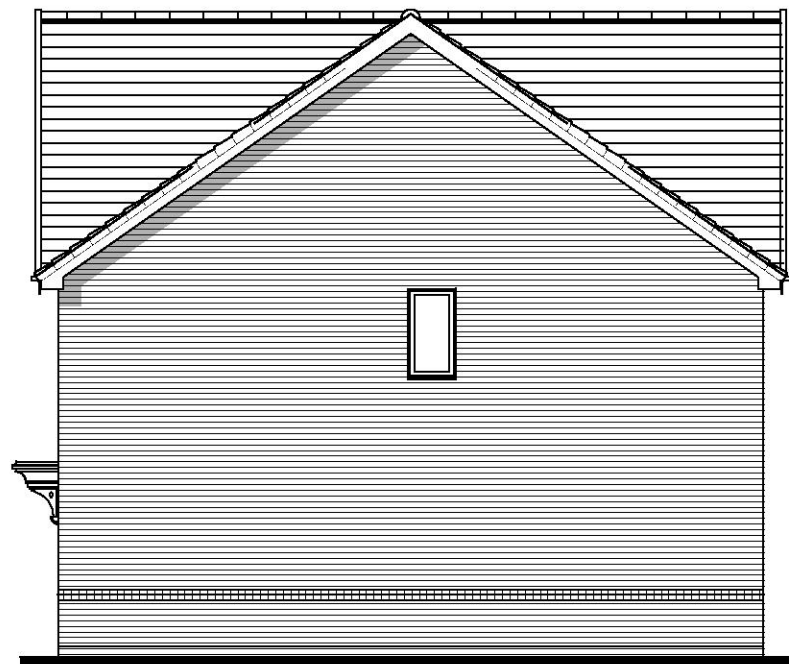


NSS.376 LAWRENCE  
SIDE ELEVATION



NSS.376 LAWRENCE  
FRONT ELEVATION

NSS.372-1 BUXTON



NSS.372-1 BUXTON  
SIDE ELEVATION



NSS.372-1 BUXTON  
REAR ELEVATION

NSS.376 LAWRENCE

PEGASUS DRAWING NUMBER:  
P18-2109-70\_18

**NOTES:**

DRAWING BASED ON LINEWORK  
PROVIDED BY BLOOR HOMES.  
[DRAWING NO: NSS.807.PL-01]

REFER TO MATERIALS LAYOUT  
FOR INDIVIDUAL PLOT  
MATERIALS INCLUDING DOOR  
COLOURS. [DRAWING NO:  
P18-2109-62-03]

**ISSUE 4**

LAWRENCE - National Space Standards		
3B4P	Actual Area	NSS Requirement
Ground Floor Plan	42.97m <sup>2</sup>	
First Floor Plan	42.97m <sup>2</sup>	
Total floor area m <sup>2</sup>	<b>85.93m<sup>2</sup></b>	84.00m <sup>2</sup>
Total floor area ft <sup>2</sup>	925ft <sup>2</sup>	904ft <sup>2</sup>
Bedroom 1	11.52m <sup>2</sup>	11.5m <sup>2</sup>
Bedroom 2	7.52m <sup>2</sup>	7.5m <sup>2</sup>
Bedroom 3	7.51m <sup>2</sup>	7.5m <sup>2</sup>
Store Under Stair	1.42m <sup>2</sup>	
Store Landing	0.88m <sup>2</sup>	
Store Bedroom 1 (SB1)	0.47m <sup>2</sup>	
<b>Built in store total</b>	2.77m <sup>2</sup>	2.5m <sup>2</sup>

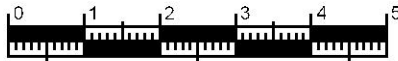
BUXTON - National Space Standards		
3B4P	Actual Area	NSS Requirement
Ground Floor Plan	42.00m <sup>2</sup>	
First Floor Plan	42.00m <sup>2</sup>	
Total floor area m <sup>2</sup>	<b>84.00m<sup>2</sup></b>	84.00m <sup>2</sup>
Total floor area ft <sup>2</sup>	904ft <sup>2</sup>	904ft <sup>2</sup>
Bedroom 1	11.50m <sup>2</sup>	11.5m <sup>2</sup>
Bedroom 2	9.62m <sup>2</sup>	7.5m <sup>2</sup>
Bedroom 3	7.75m <sup>2</sup>	7.5m <sup>2</sup>
Store Under Stair	1.32m <sup>2</sup>	
Store Bedroom 1 (SB1)	0.15m <sup>2</sup>	
Store Bedroom 2 (SB2)	1.02m <sup>2</sup>	
<b>Built in store total</b>	2.50m <sup>2</sup>	2.5m <sup>2</sup>

**Lawrence Buxton  
BRICK  
NSS.807.PL-01**

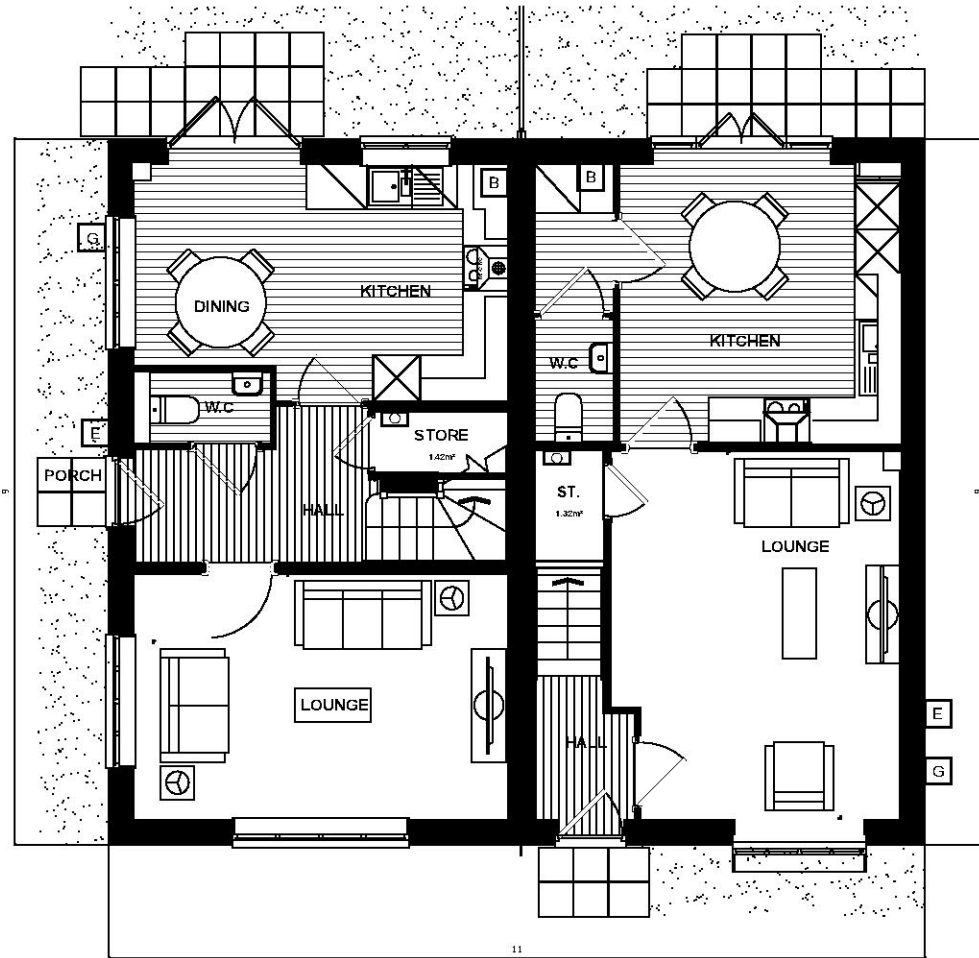
DATE: APR 2019 REV:  
SCALE: 1:100 @ A3

DRAWN: GW 87.30 / 85.35m<sup>2</sup>  
CHECKED: GPM 940 / 919 ft<sup>2</sup>

**BLOOR HOMES**



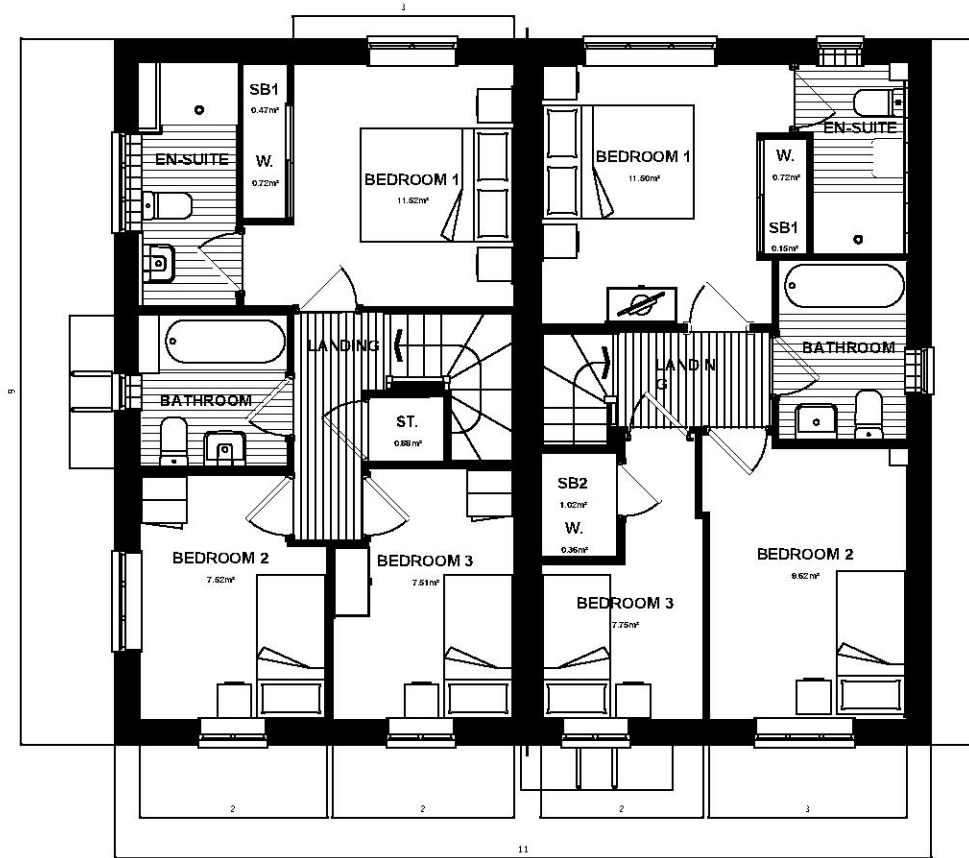
Scale 1:100  
Issue 4



**NSS.376 LAWRENCE  
GROUND FLOOR PLAN**

**NSS.372-1 BUXTON**

**B** BOILER LOCATION    **E** ELECTRIC METER LOCATION    **G** GAS METER LOCATION    **C** CONSUMER UNIT LOCATION



**NSS.376 LAWRENCE  
FIRST FLOOR PLAN**

**NSS.372-1 BUXTON**

PEGASUS DRAWING NUMBER:  
P18-2109\_70-09

**NOTES:**

DRAWING BASED ON LINEWORK PROVIDED BY BLOOR HOMES.  
(DRAWING NO: NSS.807.PL-05)

REFER TO MATERIALS LAYOUT FOR INDIVIDUAL PLOT MATERIALS INCLUDING DOOR COLOURS.(DRAWING NO: P18-2109-62-03)

**ISSUE 4**

LAWRENCE - National Space Standards		
3B4P	Actual Area	NSS Requirement
Ground Floor Plan	42.97m <sup>2</sup>	
First Floor Plan	42.97m <sup>2</sup>	
Total floor area m <sup>2</sup>	<b>85.93m<sup>2</sup></b>	84.00m <sup>2</sup>
Total floor area ft <sup>2</sup>	925ft <sup>2</sup>	904ft <sup>2</sup>
Bedroom 1	11.52m <sup>2</sup>	11.5m <sup>2</sup>
Bedroom 2	7.52m <sup>2</sup>	7.5m <sup>2</sup>
Bedroom 3	7.51m <sup>2</sup>	7.5m <sup>2</sup>
Store Under Stair	1.42m <sup>2</sup>	
Store Landing	0.88m <sup>2</sup>	
Store Bedroom 1 (SB1)	0.47m <sup>2</sup>	
<b>Built in store total</b>	<b>2.77m<sup>2</sup></b>	<b>2.5m<sup>2</sup></b>

BUXTON - National Space Standards		
3B4P	Actual Area	NSS Requirement
Ground Floor Plan	42.00m <sup>2</sup>	
First Floor Plan	42.00m <sup>2</sup>	
Total floor area m <sup>2</sup>	<b>84.00m<sup>2</sup></b>	84.00m <sup>2</sup>
Total floor area ft <sup>2</sup>	904ft <sup>2</sup>	904ft <sup>2</sup>
Bedroom 1	11.50m <sup>2</sup>	11.5m <sup>2</sup>
Bedroom 2	9.62m <sup>2</sup>	7.5m <sup>2</sup>
Bedroom 3	7.75m <sup>2</sup>	7.5m <sup>2</sup>
Store Under Stair	1.32m <sup>2</sup>	
Store Bedroom 1 (SB1)	0.15m <sup>2</sup>	
Store Bedroom 2 (SB2)	1.02m <sup>2</sup>	
<b>Built in store total</b>	<b>2.50m<sup>2</sup></b>	<b>2.5m<sup>2</sup></b>

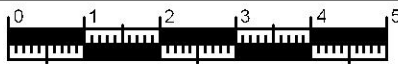
**Lawrence Buxton**

**NSS.807.PL-05**

DATE: APR 2019    REV:  
SCALE: 1:100 @ A3

DRAWN: GW    87.30 / 85.35m<sup>2</sup>  
CHECKED: GPM    940 / 919 ft<sup>2</sup>

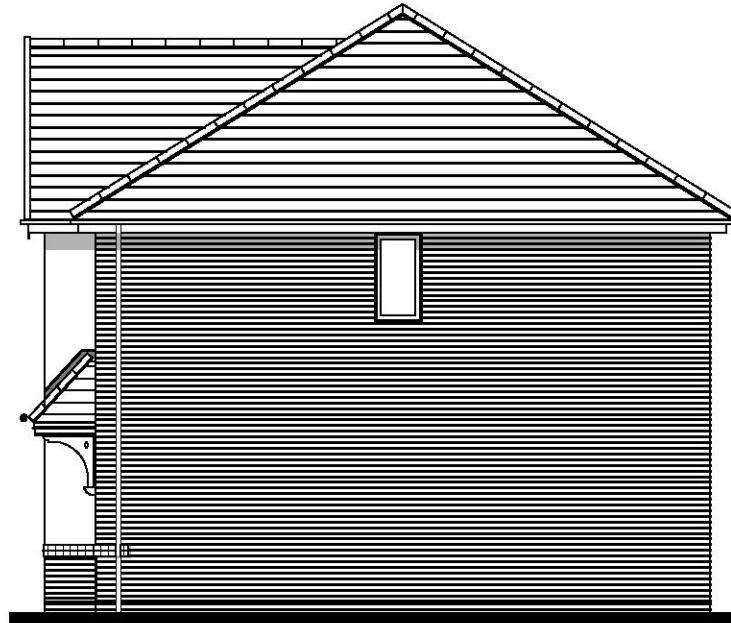
**BLOOR HOMES**



Scale 1:100  
Issue 4



NSS.382  
FRONT ELEVATION



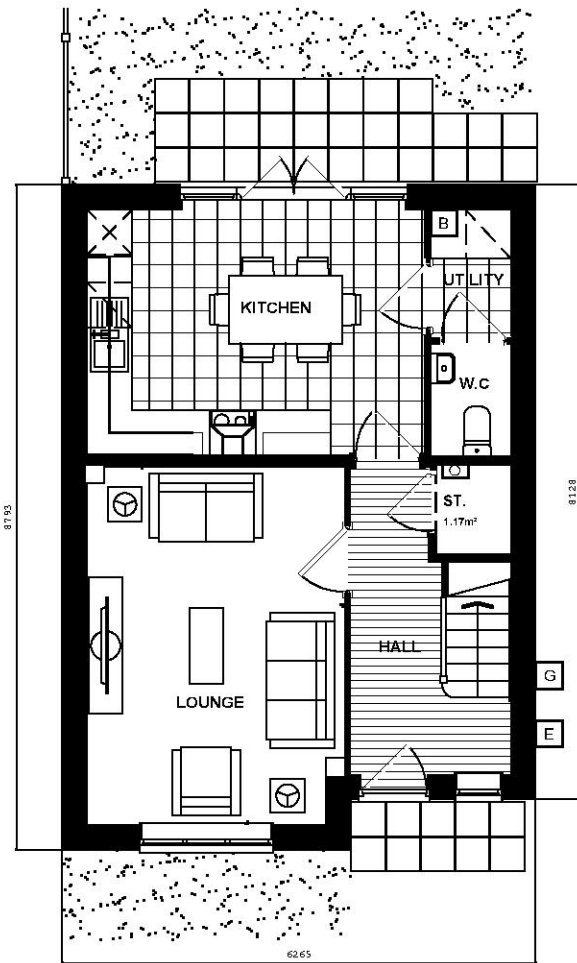
NSS.382  
SIDE ELEVATION



NSS.382  
REAR ELEVATION

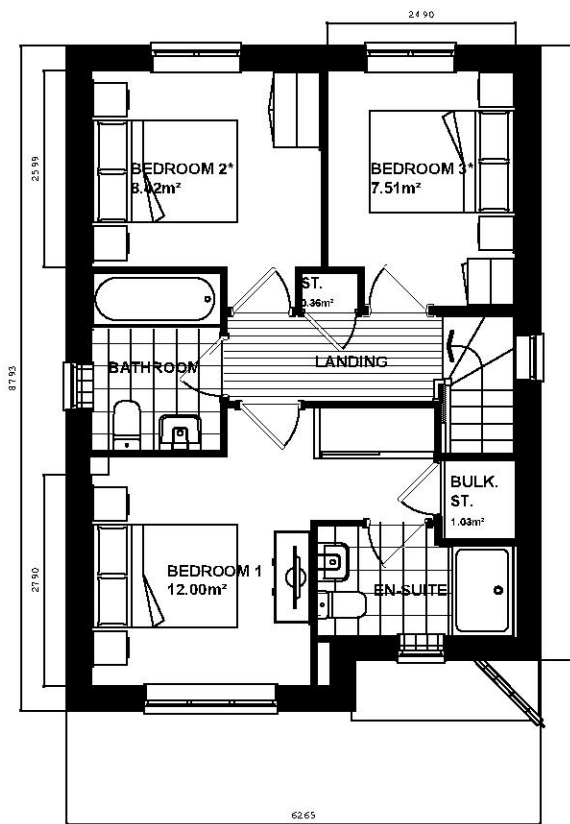


NSS.382  
SIDE ELEVATION



NSS.382  
GROUND FLOOR PLAN

B NO. 100 LOCATION  
E ELECTRIC METER LOCATION  
G GAS METER LOCATION  
C CONSUMER UNIT LOCATION



NSS.382  
FIRST FLOOR PLAN

\* Denotes floor areas shown to comply with National Described Space Standards (see schedule). Room layout shown as furnished and does not demonstrate compliance.

PEGASUS DRAWING NUMBER:  
P18-2109-70\_20

**NOTES:**

DRAWING BASED ON LINEWORK PROVIDED BY BLOOR HOMES. (DRAWING NO: NSS.382.PL-02)

REFER TO MATERIALS LAYOUT FOR INDIVIDUAL PLOT MATERIALS INCLUDING DOOR COLOURS. (DRAWING NO: P18-2109-62-03)

**ISSUE 4**

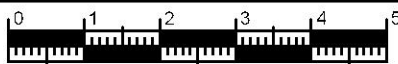
3B4P	Actual Area	NSS Requirement
Ground Floor Plan	44.04m <sup>2</sup>	
First Floor Plan	44.04m <sup>2</sup>	
Total Floor Area m <sup>2</sup>	<b>88.07m<sup>2</sup></b>	84.00m <sup>2</sup>
Total Floor Area ft <sup>2</sup>	948ft <sup>2</sup>	904ft <sup>2</sup>
Bedroom 1	12.00m <sup>2</sup>	11.5m <sup>2</sup>
Bedroom 2	8.42m <sup>2</sup>	7.5m <sup>2</sup>
Bedroom 3	7.51m <sup>2</sup>	7.5m <sup>2</sup>
Store Under Stair	1.17m <sup>2</sup>	
Store Landing	0.36m <sup>2</sup>	
Bulkhead Store	1.03m <sup>2</sup>	
<b>Built in Store Total</b>	<b>2.56m<sup>2</sup></b>	<b>2.5m<sup>2</sup></b>

**Huxley**  
RENDER  
NSS.382.PL-02

DATE: SEPT 2019 REV:  
SCALE: A3

DRAWN: CN 89.45m<sup>2</sup>  
CHECKED: GPM 963ft<sup>2</sup>

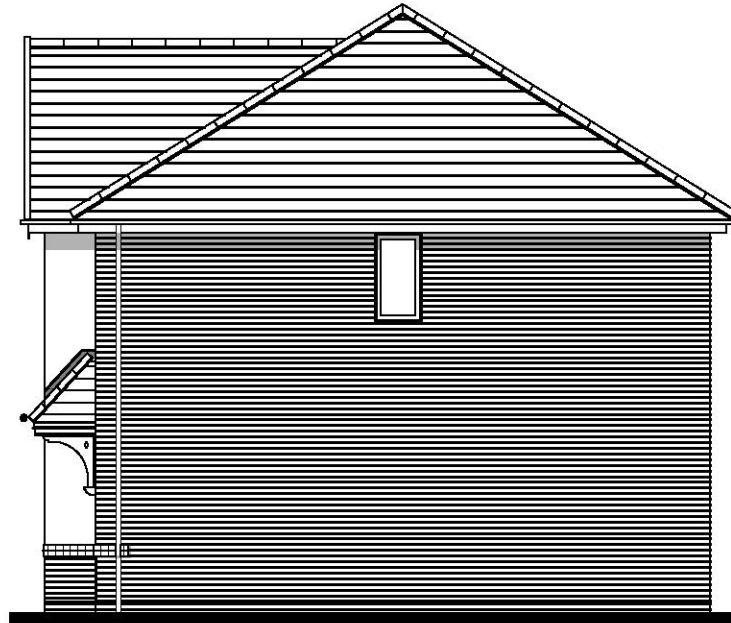
**BLOOR HOMES**



Scale 1:100  
Issue 4



**NSS.382**  
FRONT ELEVATION



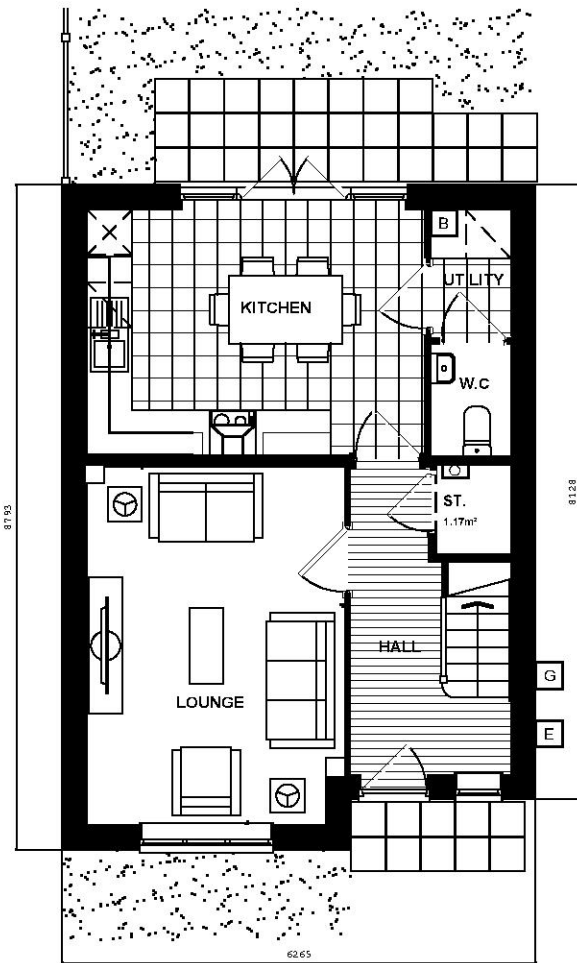
**NSS.382**  
SIDE ELEVATION



**NSS.382**  
REAR ELEVATION

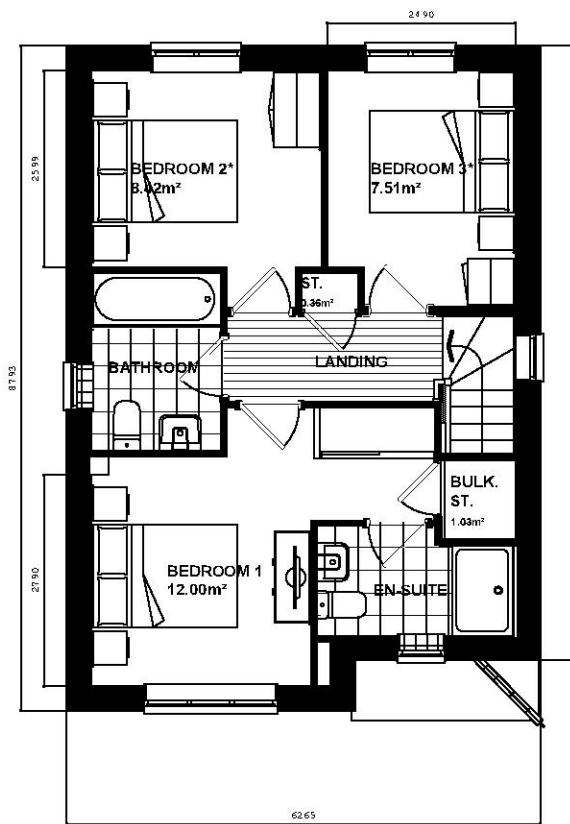


**NSS.382**  
SIDE ELEVATION



**NSS.382**  
GROUND FLOOR PLAN

- B** NO. 10 USER LOCATION
- E** ELECTRIC METER LOCATION
- G** GAS METER LOCATION
- C** CONSUMER UNIT LOCATION



**NSS.382**  
FIRST FLOOR PLAN

\* Denotes floor areas shown to comply with National Described Space Standards (see schedule). Room layout shown as furnished and does not demonstrate compliance.

PEGASUS DRAWING NUMBER:  
P18-2109-70\_21

**NOTES:**

DRAWING BASED ON LINEWORK PROVIDED BY BLOOR HOMES. (DRAWING NO: NSS.382.PL-01)

REFER TO MATERIALS LAYOUT FOR INDIVIDUAL PLOT MATERIALS INCLUDING DOOR COLOURS. (DRAWING NO: P18-2109-62-03)

**ISSUE 4**

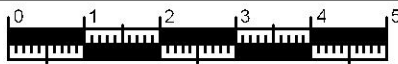
3B4P	Actual Area	NSS Requirement
Ground Floor Plan	44.04m <sup>2</sup>	
First Floor Plan	44.04m <sup>2</sup>	
Total Floor Area m <sup>2</sup>	<b>88.07m<sup>2</sup></b>	84.00m <sup>2</sup>
Total Floor Area ft <sup>2</sup>	948ft <sup>2</sup>	904ft <sup>2</sup>
Bedroom 1	12.00m <sup>2</sup>	11.5m <sup>2</sup>
Bedroom 2	8.42m <sup>2</sup>	7.5m <sup>2</sup>
Bedroom 3	7.51m <sup>2</sup>	7.5m <sup>2</sup>
Store Under Stair	1.17m <sup>2</sup>	
Store Landing	0.36m <sup>2</sup>	
Bulkhead Store	1.03m <sup>2</sup>	
<b>Built in Store Total</b>	<b>2.56m<sup>2</sup></b>	<b>2.5m<sup>2</sup></b>

**Huxley**  
BRICK  
NSS.382.PL-01

DATE: SEPT 2019      REV:  
SCALE: A3

DRAWN: CN      89.45m<sup>2</sup>  
CHECKED: GPM      963ft<sup>2</sup>



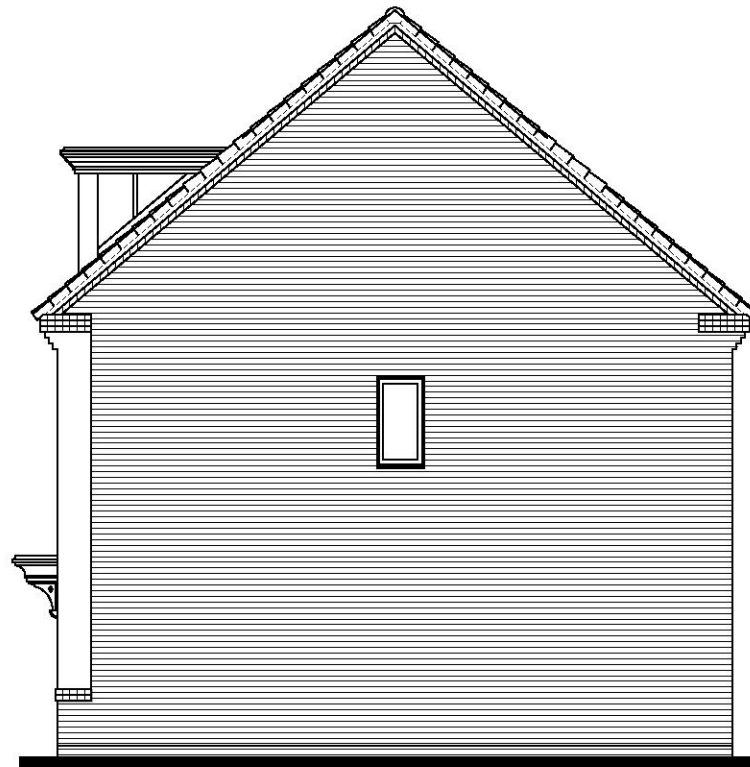


Scale 1:100  
Issue 4



NSS.384  
FRONT ELEVATION

NSS.384-1

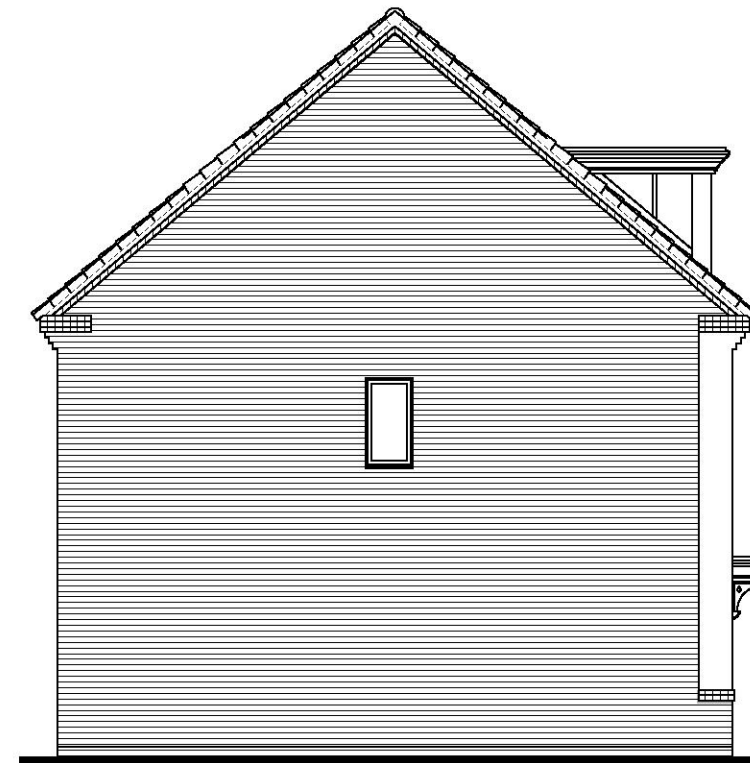


NSS.384-1  
SIDE ELEVATION



NSS.384-1  
REAR ELEVATION

NSS.384



NSS.384  
SIDE ELEVATION

PEGASUS DRAWING NUMBER:  
P18-2109-70\_22

**NOTES:**

DRAWING BASED ON LINEWORK  
PROVIDED BY BLOOR HOMES.

[DRAWING NO:  
NSS.384\_NSS.384-1.PL02]

REFER TO MATERIALS LAYOUT  
FOR INDIVIDUAL PLOT  
MATERIALS INCLUDING DOOR  
COLOURS. [DRAWING NO:  
P18-2109-62-03]

# ISSUE 4

National Space Standards		
NSS.3B4P	Actual Area	NSS Requirement
Ground Floor Plan	36m <sup>2</sup>	
First Floor Plan	35.69m <sup>2</sup>	
Second Floor Plan	25.82m <sup>2</sup>	
Total Floor Area m <sup>2</sup>	<b>97.19m<sup>2</sup></b>	90.00m <sup>2</sup>
Total Floor Area ft <sup>2</sup>	1046ft <sup>2</sup>	969ft <sup>2</sup>
Bedroom 1	16.08m <sup>2</sup>	11.5m <sup>2</sup>
Bedroom 2	11.87m <sup>2</sup>	7.5m <sup>2</sup>
Bedroom 3	7.63m <sup>2</sup>	7.5m <sup>2</sup>
Store	1.11m <sup>2</sup>	
Store Landing	0.78m <sup>2</sup>	
Store Bedroom 1	0.88m <sup>2</sup>	
<b>Built in Store Total</b>	<b>2.77m<sup>2</sup></b>	<b>2.50m<sup>2</sup></b>

## Forbes

RENDER

NSS.384\_384-1.PL-02

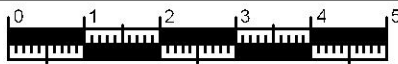
DATE: AUGUST 2019 REV:

SCALE: A3

DRAWN: DR 97.55m<sup>2</sup>

CHECKED: GPM 1050ft<sup>2</sup>

**BLOOR HOMES**

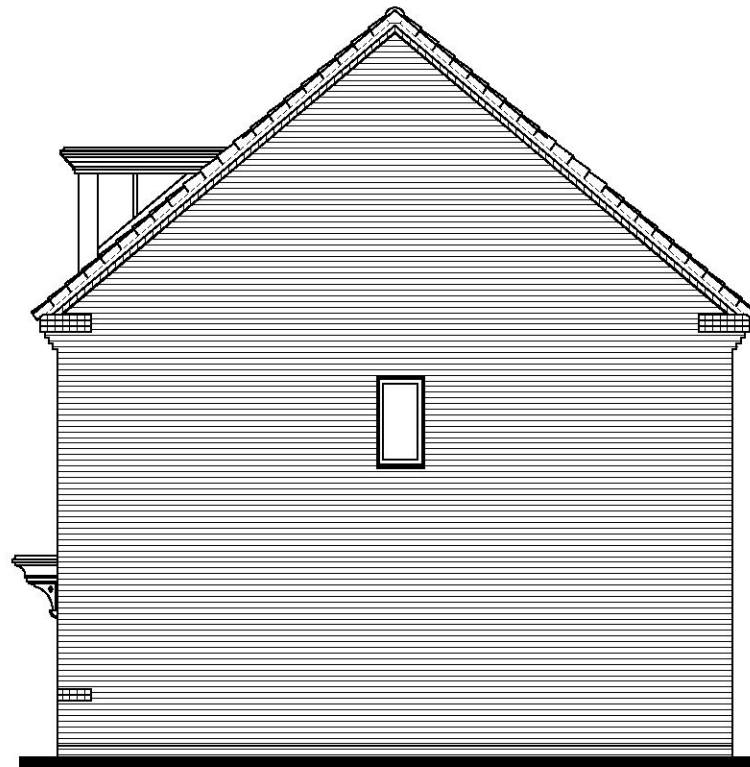


Scale 1:100  
Issue 4



NSS.384  
FRONT ELEVATION

NSS.384-1



NSS.384-1  
SIDE ELEVATION



NSS.384-1  
REAR ELEVATION

NSS.384



NSS.384  
SIDE ELEVATION

PEGASUS DRAWING NUMBER:  
P18-2109-70\_23

**NOTES:**

DRAWING BASED ON LINEWORK  
PROVIDED BY BLOOR HOMES.

[DRAWING NO:  
NSS.384\_NSS.384-1.PL01]

REFER TO MATERIALS LAYOUT  
FOR INDIVIDUAL PLOT  
MATERIALS INCLUDING DOOR  
COLOURS. [DRAWING NO:  
P18-2109-62-03]

# ISSUE 4

National Space Standards		
NSS.3B4P	Actual Area	NSS Requirement
Ground Floor Plan	36m <sup>2</sup>	
First Floor Plan	35.69m <sup>2</sup>	
Second Floor Plan	25.82m <sup>2</sup>	
Total Floor Area m <sup>2</sup>	<b>97.19m<sup>2</sup></b>	90.00m <sup>2</sup>
Total Floor Area ft <sup>2</sup>	1046ft <sup>2</sup>	969ft <sup>2</sup>
Bedroom 1	16.08m <sup>2</sup>	11.5m <sup>2</sup>
Bedroom 2	11.87m <sup>2</sup>	7.5m <sup>2</sup>
Bedroom 3	7.63m <sup>2</sup>	7.5m <sup>2</sup>
Store	1.11m <sup>2</sup>	
Store Landing	0.78m <sup>2</sup>	
Store Bedroom 1	0.88m <sup>2</sup>	
<b>Built in Store Total</b>	<b>2.77m<sup>2</sup></b>	<b>2.50m<sup>2</sup></b>

## Forbes

BRICK

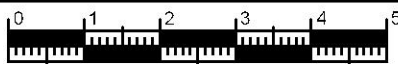
NSS.384\_384-1.PL-01

DATE: AUGUST 2019 REV:

SCALE: A3

DRAWN: DR 97.55m<sup>2</sup>  
CHECKED: GPM 1050ft<sup>2</sup>



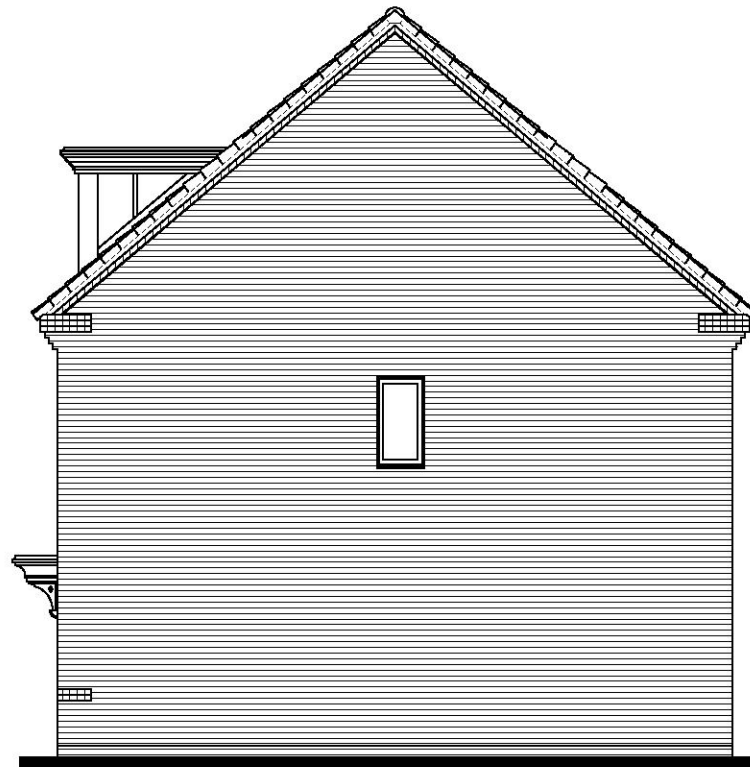


Scale 1:100  
Issue 4



NSS.384  
FRONT ELEVATION

NSS.384-1



NSS.384-1  
SIDE ELEVATION



NSS.384-1  
REAR ELEVATION

NSS.384



NSS.384  
SIDE ELEVATION

PEGASUS DRAWING NUMBER:  
P18-2109-70\_24

**NOTES:**

DRAWING BASED ON LINEWORK  
PROVIDED BY BLOOR HOMES.

[DRAWING NO:  
NSS.384\_NSS.384-1.PL01]

REFER TO MATERIALS LAYOUT  
FOR INDIVIDUAL PLOT  
MATERIALS INCLUDING DOOR  
COLOURS. [DRAWING NO:  
P18-2109-62-03]

# ISSUE 4

National Space Standards		
NSS.3B4P	Actual Area	NSS Requirement
Ground Floor Plan	36m <sup>2</sup>	
First Floor Plan	35.69m <sup>2</sup>	
Second Floor Plan	25.82m <sup>2</sup>	
Total Floor Area m <sup>2</sup>	<b>97.19m<sup>2</sup></b>	90.00m <sup>2</sup>
Total Floor Area ft <sup>2</sup>	1046ft <sup>2</sup>	969ft <sup>2</sup>
Bedroom 1	16.08m <sup>2</sup>	11.5m <sup>2</sup>
Bedroom 2	11.87m <sup>2</sup>	7.5m <sup>2</sup>
Bedroom 3	7.63m <sup>2</sup>	7.5m <sup>2</sup>
Store	1.11m <sup>2</sup>	
Store Landing	0.78m <sup>2</sup>	
Store Bedroom 1	0.88m <sup>2</sup>	
<b>Built in Store Total</b>	<b>2.77m<sup>2</sup></b>	<b>2.50m<sup>2</sup></b>

## Forbes

BRICK

NSS.384\_384-1.PL-01

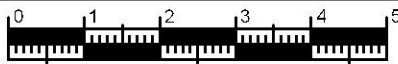
DATE: AUGUST 2019 REV:

SCALE: A3

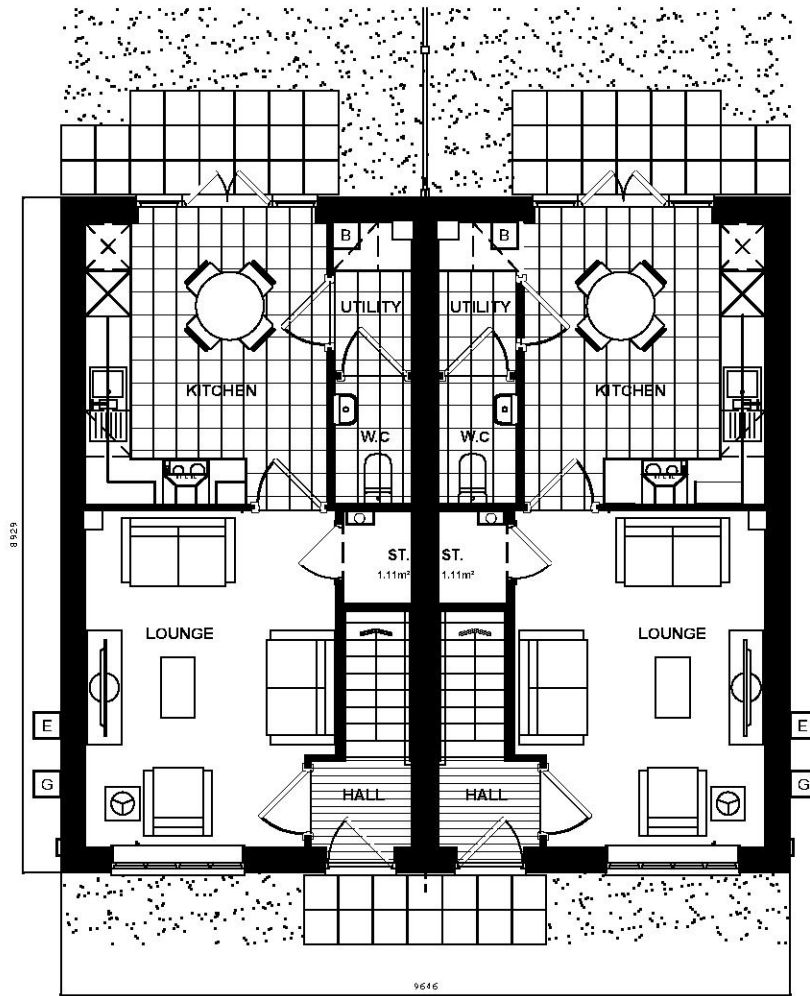
DRAWN: DR 97.55m<sup>2</sup>

CHECKED: GPM 1050ft<sup>2</sup>

**BLOOR HOMES**

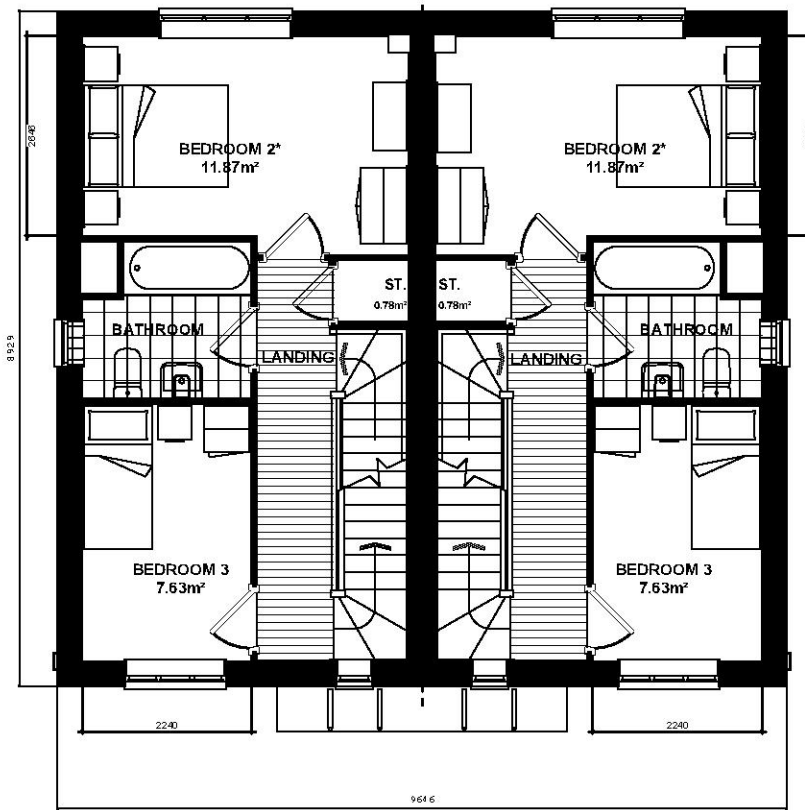


Scale 1:100  
Issue 4



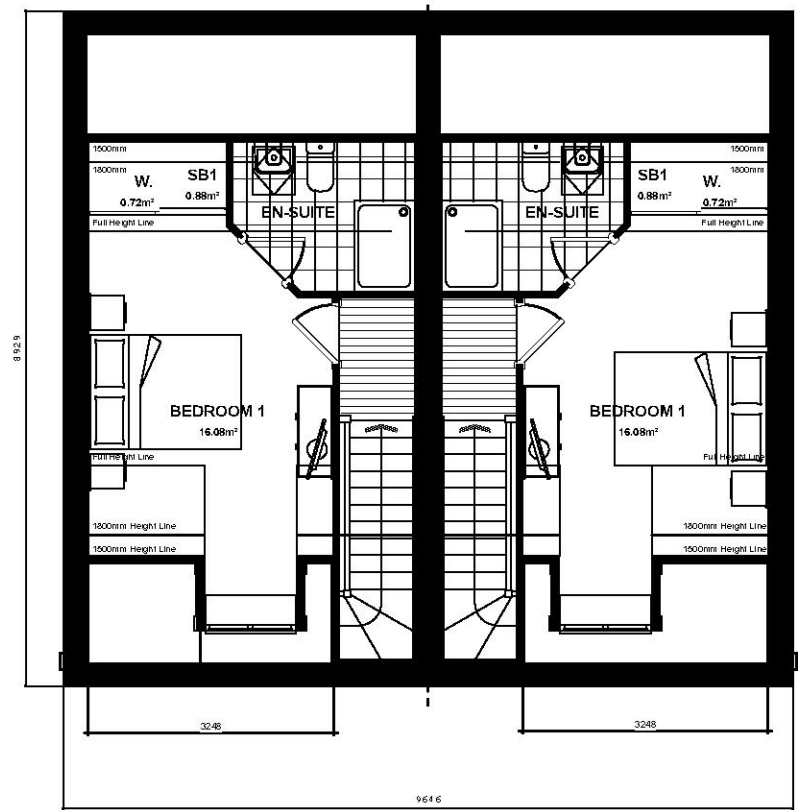
**NSS.384  
GROUND FLOOR PLAN**

**B** BOILER LOCATION    **GF** GAS FLOOR BOX LOCATION    **E** ELECTRIC METER LOCATION    **C** COINTEGRUM UNIT LOCATION



**NSS.384  
FIRST FLOOR PLAN**

\* Denotes floor areas shown to comply with National Described Space Standards (see schedule). Room layout shown as furnished and does not demonstrate compliance.



**NSS.384  
SECOND FLOOR PLAN**

National Space Standards		
NSS.384P	Actual Area	NSS Requirement
Ground Floor Plan	36m <sup>2</sup>	
First Floor Plan	35.69m <sup>2</sup>	
Second Floor Plan	25.82m <sup>2</sup>	
Total Floor Area m <sup>2</sup>	<b>97.19m<sup>2</sup></b>	90.00m <sup>2</sup>
Total Floor Area ft <sup>2</sup>	1046ft <sup>2</sup>	969ft <sup>2</sup>
Bedroom 1	16.08m <sup>2</sup>	11.5m <sup>2</sup>
Bedroom 2	11.87m <sup>2</sup>	7.5m <sup>2</sup>
Bedroom 3	7.63m <sup>2</sup>	7.5m <sup>2</sup>
Store	1.11m <sup>2</sup>	
Store Landing	0.78m <sup>2</sup>	
Store Bedroom 1	0.88m <sup>2</sup>	
<b>Built in Store Total</b>	<b>2.77m<sup>2</sup></b>	2.50m <sup>2</sup>

PEGASUS DRAWING NUMBER:  
P18-2109-70\_25

**NOTES:**

DRAWING BASED ON LINEWORK PROVIDED BY BLOOR HOMES. (DRAWING NO: NSS.384\_NSS.384-1.PL05)

REFER TO MATERIALS LAYOUT FOR INDIVIDUAL PLOT MATERIALS INCLUDING DOOR COLOURS. (DRAWING NO: P18-2109-62-03)

**Forbes**

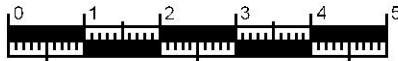
**NSS.384\_384-1.PL-05**

**DATE: AUGUST 2019 REV:**  
**SCALE: A3**

DRAWN: DR 97.55m<sup>2</sup>  
CHECKED: GPM 1050ft<sup>2</sup>

**ISSUE 4**

**BLOOR HOMES**

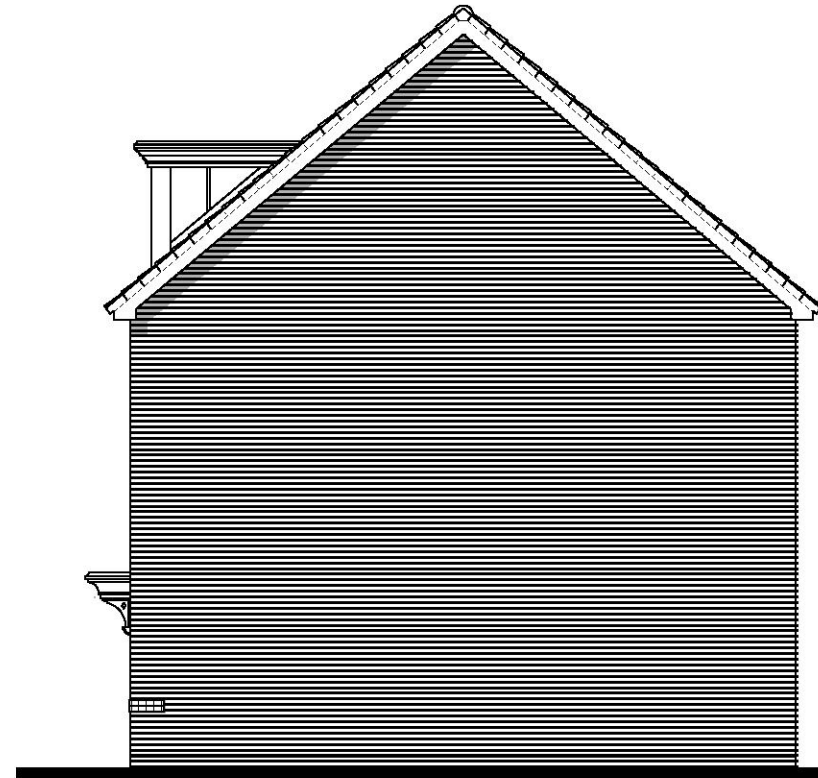


Scale 1:100  
Issue 4



NSS.383  
FRONT ELEVATION

NSS.383-1

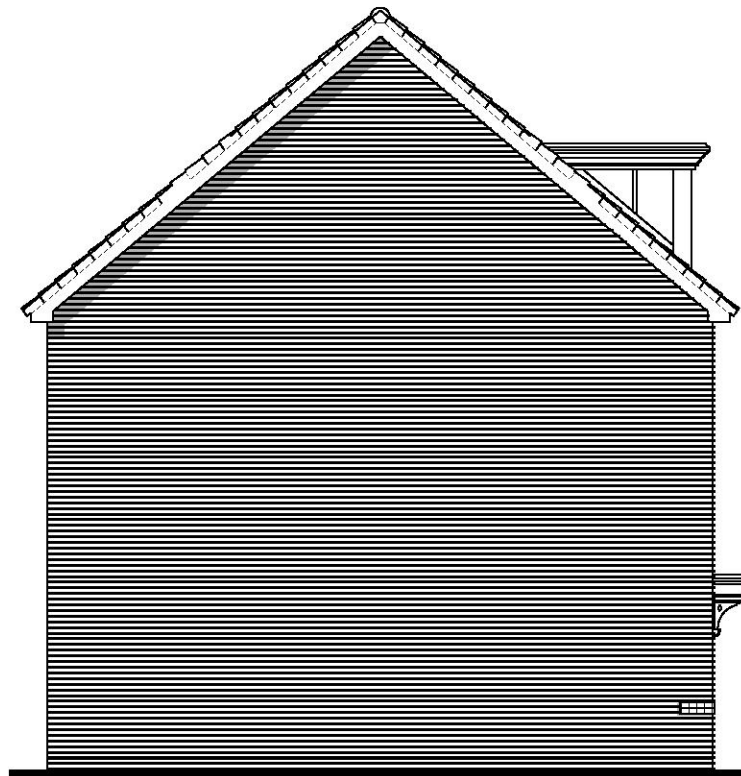


NSS.383-1  
SIDE ELEVATION



NSS.383-1  
REAR ELEVATION

NSS.383



NSS.383  
SIDE ELEVATION

PEGASUS DRAWING NUMBER:  
P18-2109-70-26

**NOTES:**

DRAWING BASED ON LINEWORK  
PROVIDED BY BLOOR HOMES.  
[DRAWING NO: NSS.383.PL-01]

REFER TO MATERIALS LAYOUT  
FOR INDIVIDUAL PLOT  
MATERIALS INCLUDING DOOR  
COLOURS. [DRAWING NO:  
P18-2109-62-03]

**ISSUE 4**

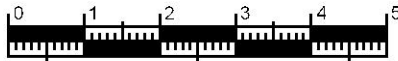
National Space Standards		
NSS.3B4P	Actual Area	NSS Requirement
Ground Floor Plan	38.71m <sup>2</sup>	
First Floor Plan	38.71m <sup>2</sup>	
Second Floor Plan	28.77m <sup>2</sup>	
Total Floor Area m <sup>2</sup>	<b>106.19m<sup>2</sup></b>	90.00m <sup>2</sup>
Total Floor Area ft <sup>2</sup>	1143ft <sup>2</sup>	969ft <sup>2</sup>
Bedroom 1	19.97m <sup>2</sup>	11.5m <sup>2</sup>
Bedroom 2	11.35m <sup>2</sup>	7.5m <sup>2</sup>
Bedroom 3	9.30m <sup>2</sup>	7.5m <sup>2</sup>
Store	0.90m <sup>2</sup>	
Store Landing	0.62m <sup>2</sup>	
Store Bedroom 1	1.78m <sup>2</sup>	
<b>Built in Store Total</b>	<b>3.30m<sup>2</sup></b>	<b>2.50m<sup>2</sup></b>

**Maynard**  
BRICK  
NSS.383.PL-01

DATE: SEPT 2019    REV:  
SCALE: A3

DRAWN: JE    107.79m<sup>2</sup>  
CHECKED: GPM    1160ft<sup>2</sup>



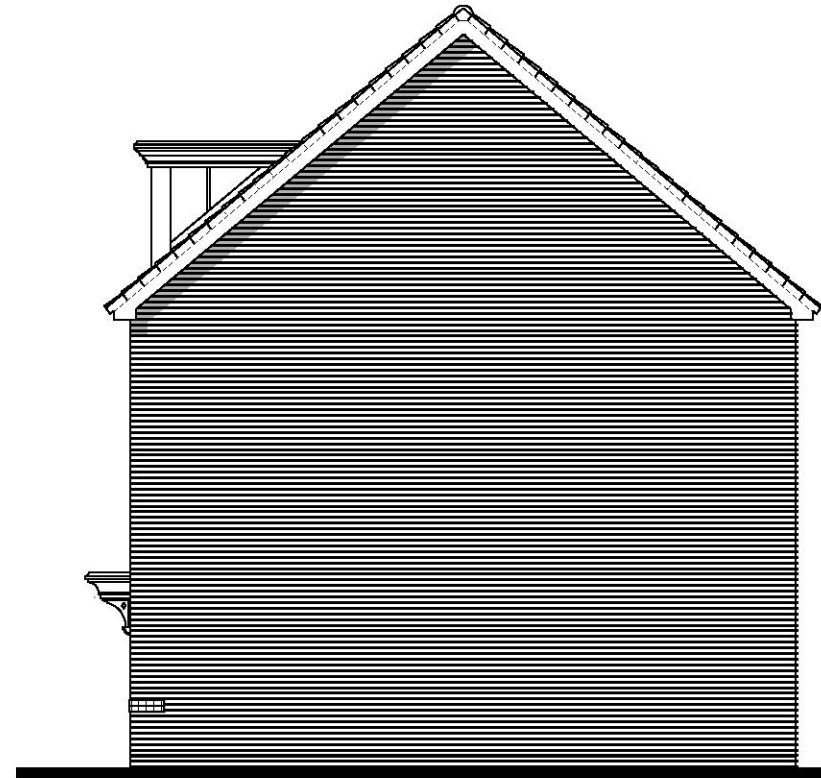


Scale 1:100  
Issue 4



NSS.383  
FRONT ELEVATION

NSS.383-1

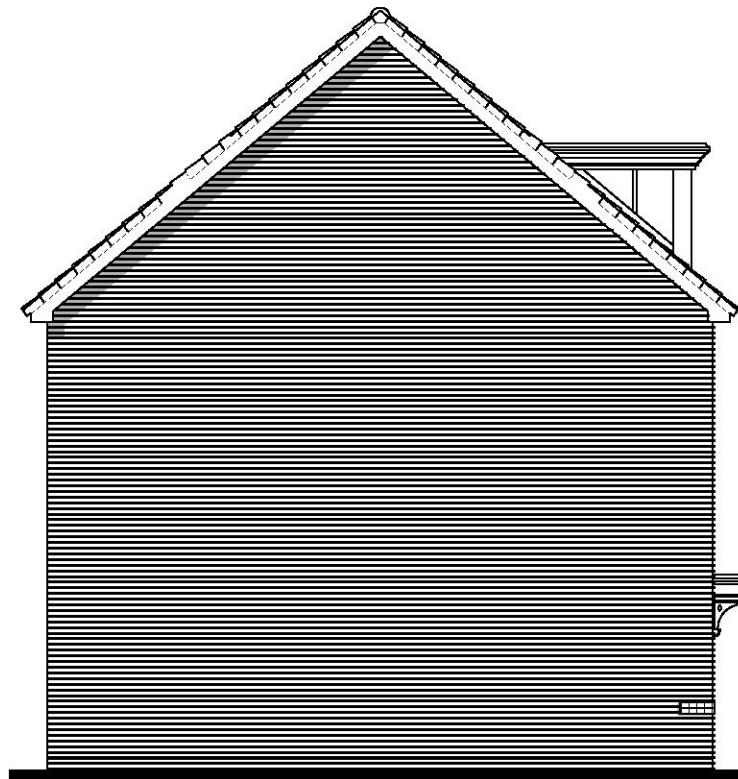


NSS.383-1  
SIDE ELEVATION



NSS.383-1  
REAR ELEVATION

NSS.383



NSS.383  
SIDE ELEVATION

PEGASUS DRAWING NUMBER:  
P18-2109-70\_27

**NOTES:**

DRAWING BASED ON LINEWORK  
PROVIDED BY BLOOR HOMES.  
[DRAWING NO: NSS.383.PL-01]

REFER TO MATERIALS LAYOUT  
FOR INDIVIDUAL PLOT  
MATERIALS INCLUDING DOOR  
COLOURS. [DRAWING NO:  
P18-2109-62-03]

**ISSUE 4**

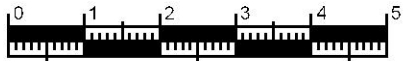
National Space Standards		
NSS.3B4P	Actual Area	NSS Requirement
Ground Floor Plan	38.71m <sup>2</sup>	
First Floor Plan	38.71m <sup>2</sup>	
Second Floor Plan	28.77m <sup>2</sup>	
Total Floor Area m <sup>2</sup>	<b>106.19m<sup>2</sup></b>	90.00m <sup>2</sup>
Total Floor Area ft <sup>2</sup>	1143ft <sup>2</sup>	969ft <sup>2</sup>
Bedroom 1	19.97m <sup>2</sup>	11.5m <sup>2</sup>
Bedroom 2	11.35m <sup>2</sup>	7.5m <sup>2</sup>
Bedroom 3	9.30m <sup>2</sup>	7.5m <sup>2</sup>
Store	0.90m <sup>2</sup>	
Store Landing	0.62m <sup>2</sup>	
Store Bedroom 1	1.78m <sup>2</sup>	
<b>Built in Store Total</b>	<b>3.30m<sup>2</sup></b>	<b>2.50m<sup>2</sup></b>

**Maynard**  
BRICK  
NSS.383.PL-01

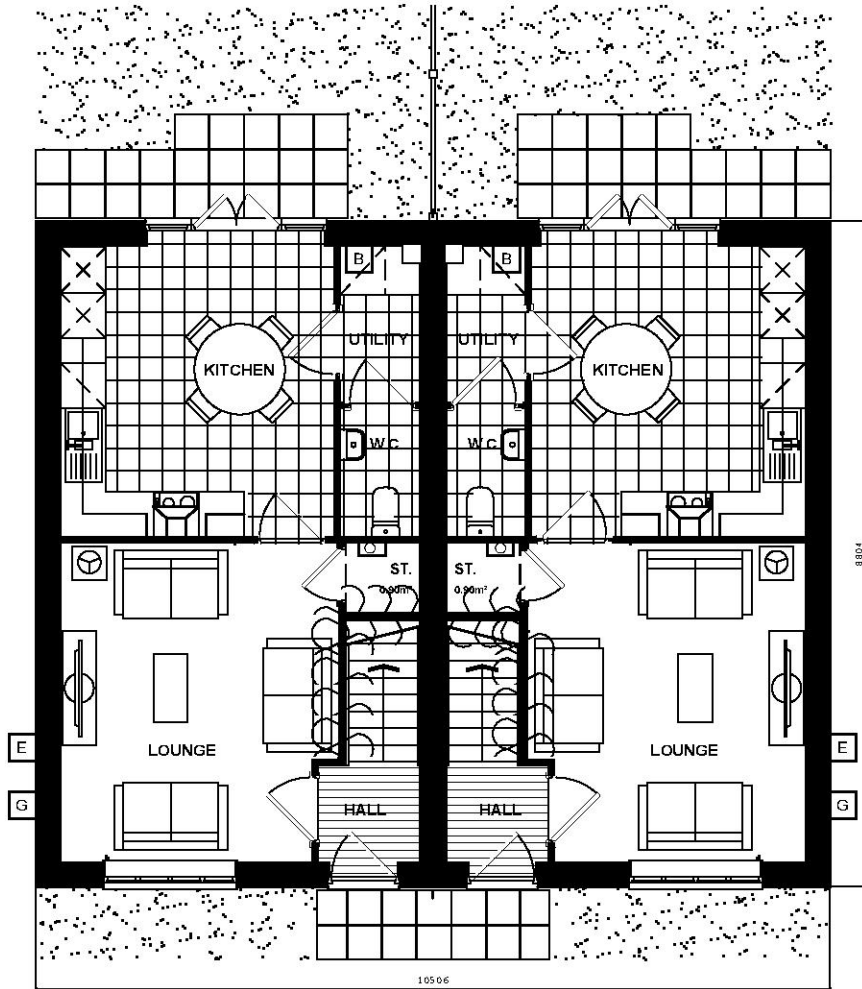
DATE: SEPT 2019    REV:  
SCALE: A3

DRAWN: JE    107.79m<sup>2</sup>  
CHECKED: GPM    1160ft<sup>2</sup>



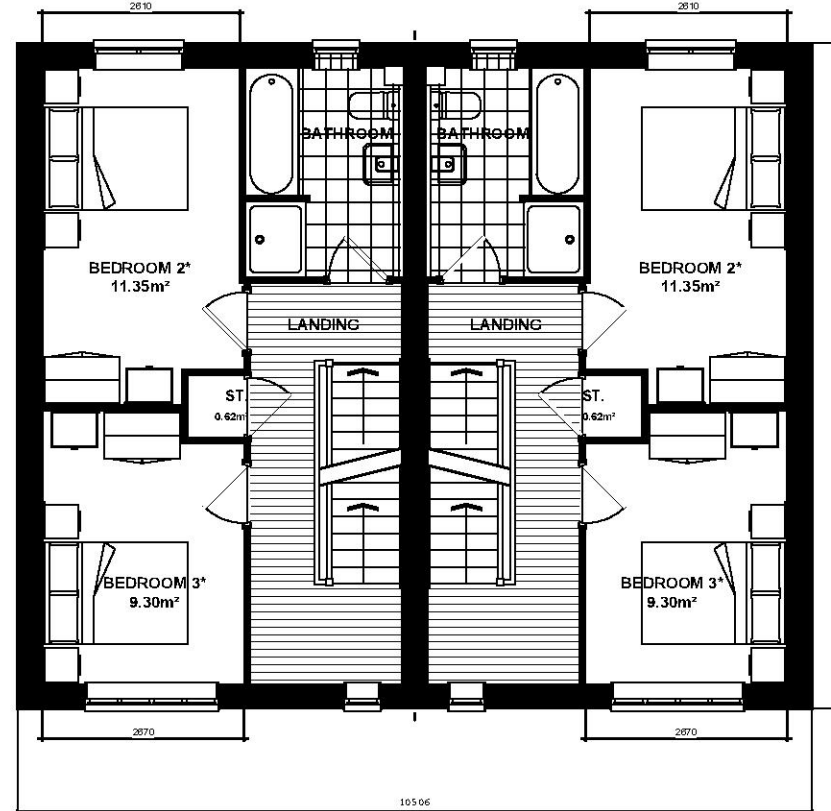


Scale 1:100  
Issue 4



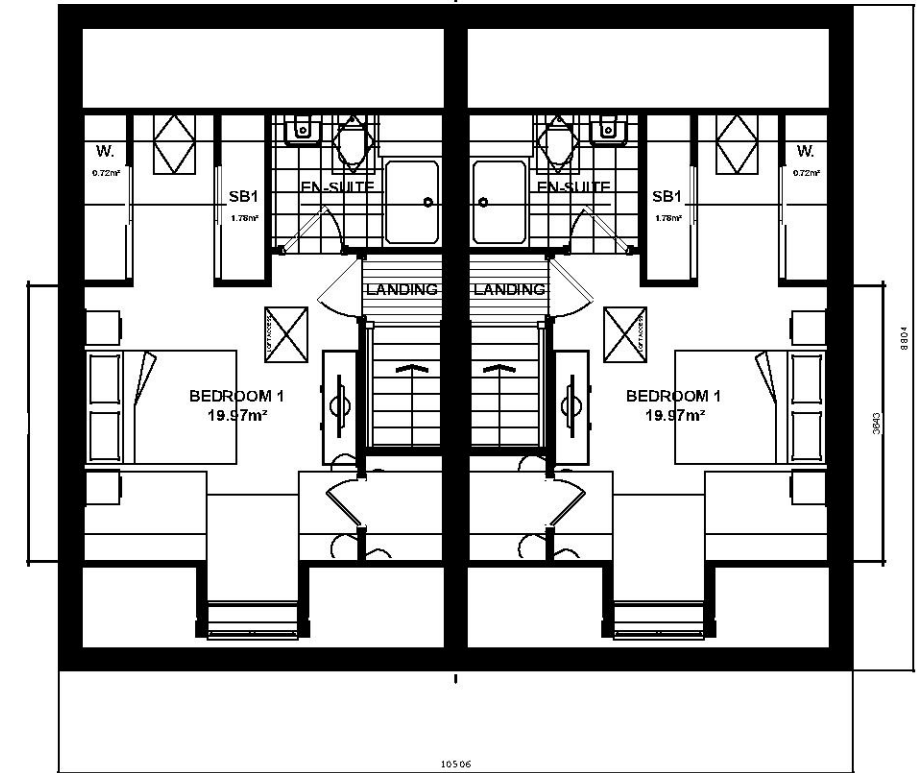
NSS.383  
GROUND FLOOR PLAN  
NSS.383-1

B BOILER LOCATION G GAS METER LOCATION E ELECTRIC METER LOCATION C CONSUMER UNIT LOCATION



NSS.383  
FIRST FLOOR PLAN  
NSS.383-1

\* Denotes floor areas shown to comply with National Described Space Standards (see schedule). Room layout shown as furnished and does not demonstrate compliance.



NSS.383  
SECOND FLOOR PLAN  
NSS.383-1

National Space Standards		
NSS.384P	Actual Area	NSS Requirement
Ground Floor Plan	38.71m <sup>2</sup>	
First Floor Plan	38.71m <sup>2</sup>	
Second Floor Plan	28.77m <sup>2</sup>	
Total Floor Area m <sup>2</sup>	<b>106.19m<sup>2</sup></b>	90.00m <sup>2</sup>
Total Floor Area ft <sup>2</sup>	1143ft <sup>2</sup>	969ft <sup>2</sup>
Bedroom 1	19.97m <sup>2</sup>	11.5m <sup>2</sup>
Bedroom 2	11.35m <sup>2</sup>	7.5m <sup>2</sup>
Bedroom 3	9.30m <sup>2</sup>	7.5m <sup>2</sup>
Store	0.90m <sup>2</sup>	
Store Landing	0.62m <sup>2</sup>	
Store Bedroom 1	1.78m <sup>2</sup>	
<b>Built in Store Total</b>	<b>3.30m<sup>2</sup></b>	<b>2.50m<sup>2</sup></b>

PEGASUS DRAWING NUMBER:  
P18-2109-70\_28

**NOTES:**

DRAWING BASED ON LINEWORK PROVIDED BY BLOOR HOMES. (DRAWING NO: NSS.383.PL-05)

REFER TO MATERIALS LAYOUT FOR INDIVIDUAL PLOT MATERIALS INCLUDING DOOR COLOURS. (DRAWING NO: P18-2109-62-03)

**Maynard**

**NSS.383.PL-05**

DATE: SEPT 2019 REV:  
SCALE: A3

DRAWN: JE 107.79m<sup>2</sup>  
CHECKED: GPM 1160ft<sup>2</sup>

**ISSUE 4**

**BLOOR HOMES**