

# Beadles Jaguar Land Rover- Southend

3/4 Design & Access Statement

29 April 2016

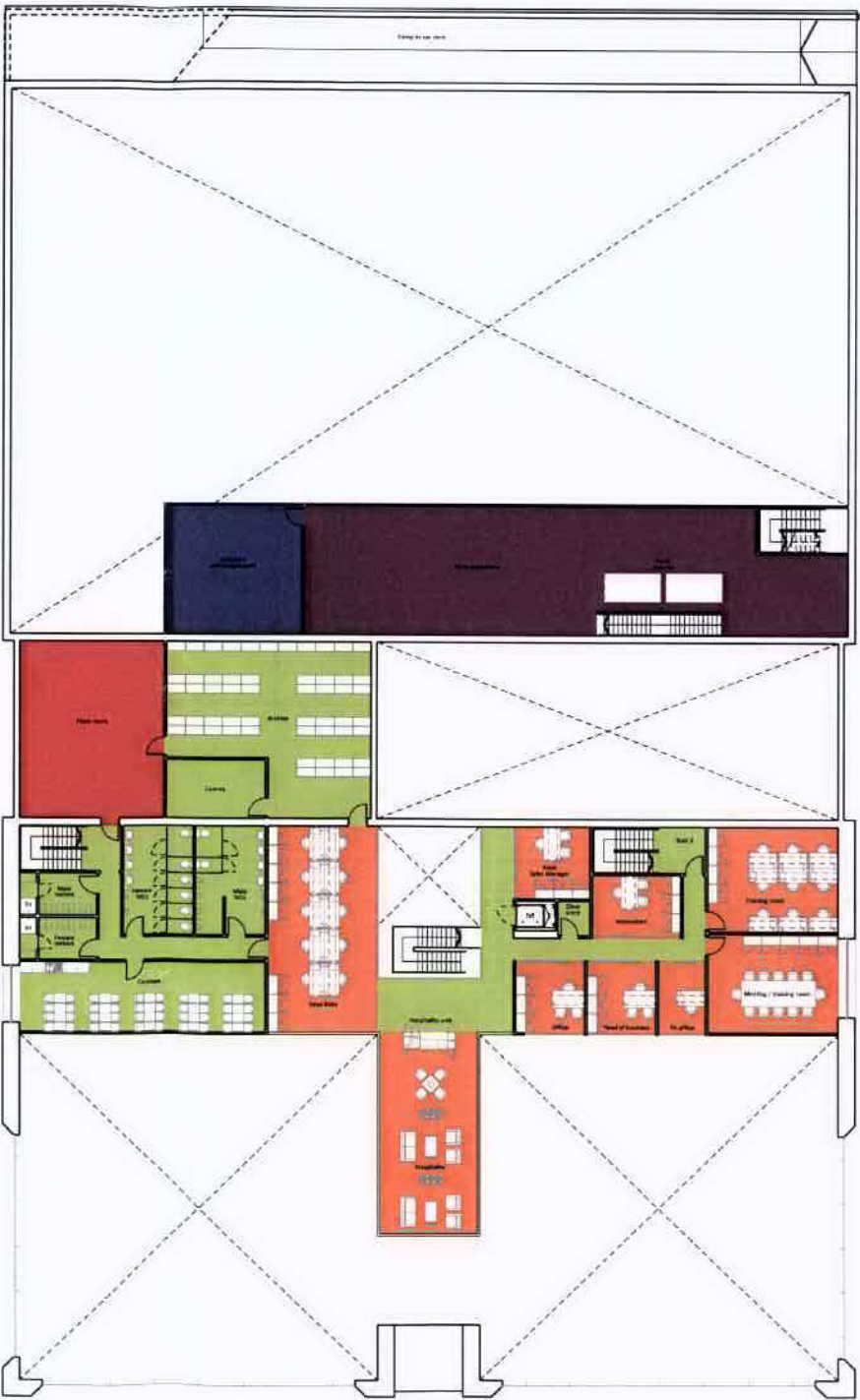


First floor GIA schedule

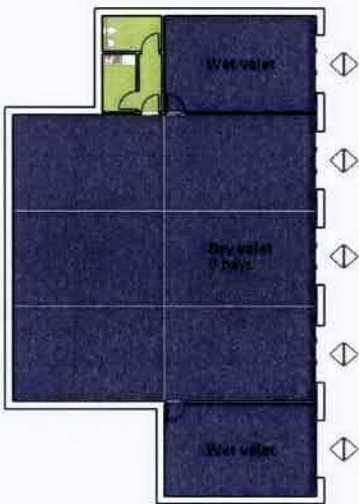
	Showroom & reception	-
	Sales area & office	247.6m <sup>2</sup>
	Workshop	50.3m <sup>2</sup>
	Parts	190.7m <sup>2</sup>
	Handover	-
	Ancillary	294.6m <sup>2</sup>
	Plant Room	72.7m <sup>2</sup>
	Sub-total:	855.9m <sup>2</sup>

GEA Schedule

Ground Floor	3103m <sup>2</sup>
First Floor	972m <sup>2</sup>
Total GEA	4086.4m <sup>2</sup>



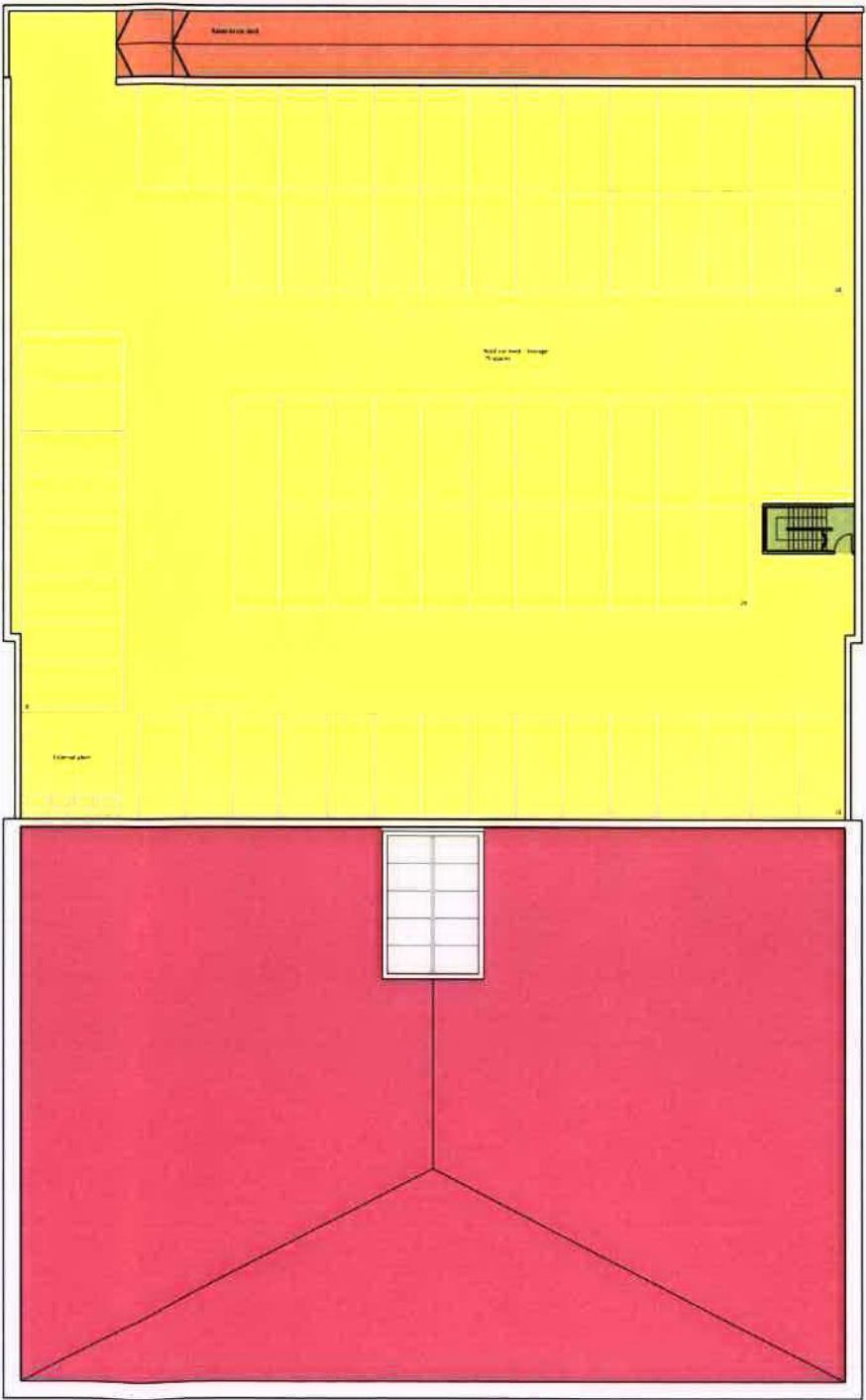
First floor plan area



Valet floor plan

Rooftop GIA schedule

	Rooftop parking	1737m <sup>2</sup>
	Roof covering	1253m <sup>2</sup>
	Ramp	139m <sup>2</sup>
	Ancillary	26m <sup>2</sup>
	Valet	319m <sup>2</sup>
Sub-total:		3474m <sup>2</sup>



Roof area

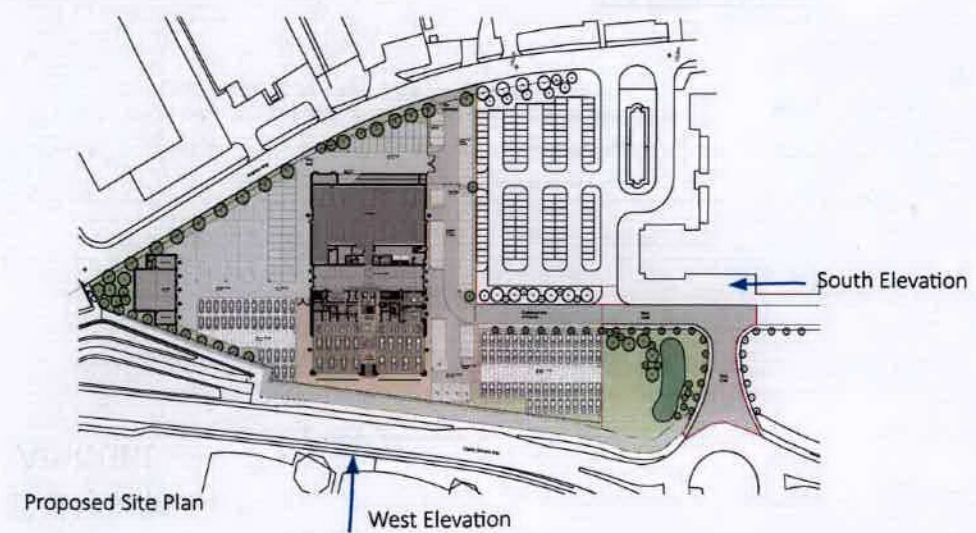




Proposed West elevation - Context

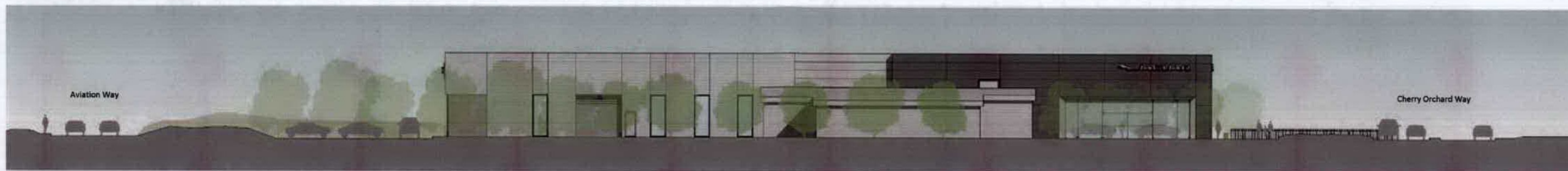


Proposed South elevation - Context

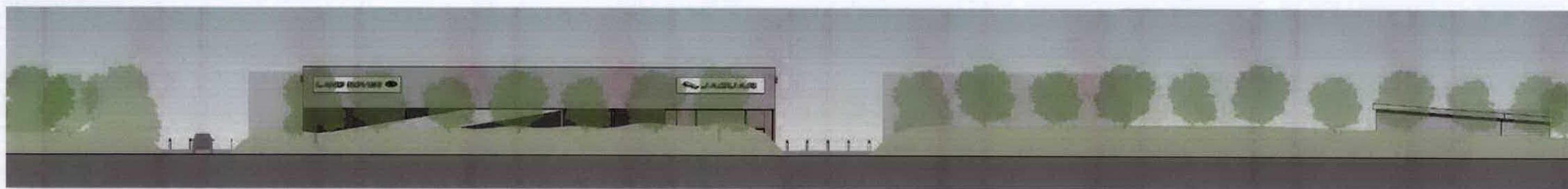




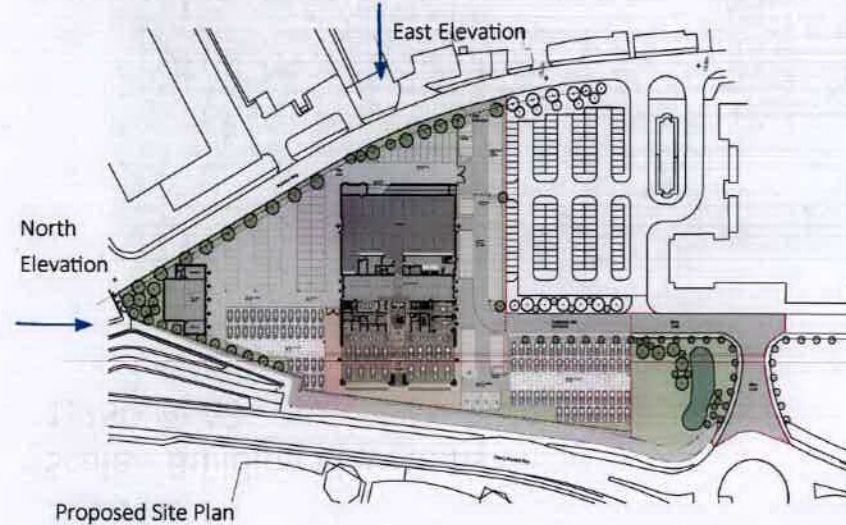
3. Design  
Scale - Context Elevations  
1:400 @ A3



Proposed North elevation- Context



Proposed East elevation- Context







Proposed West elevation

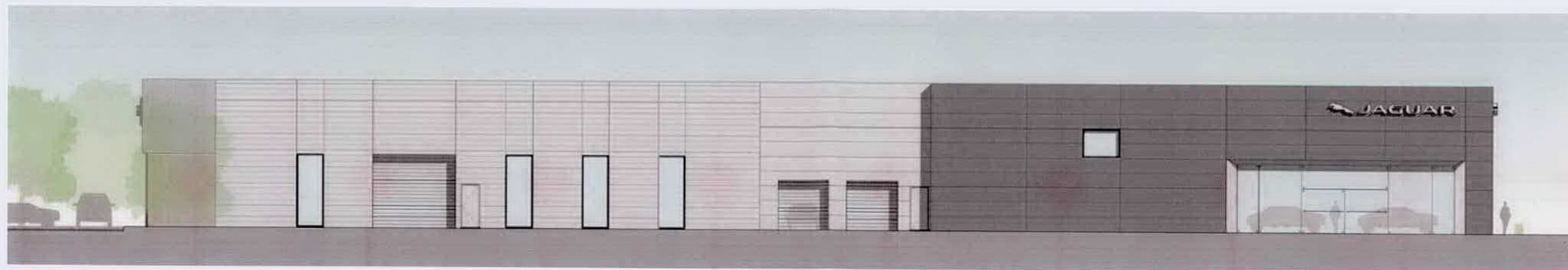


Proposed South elevation

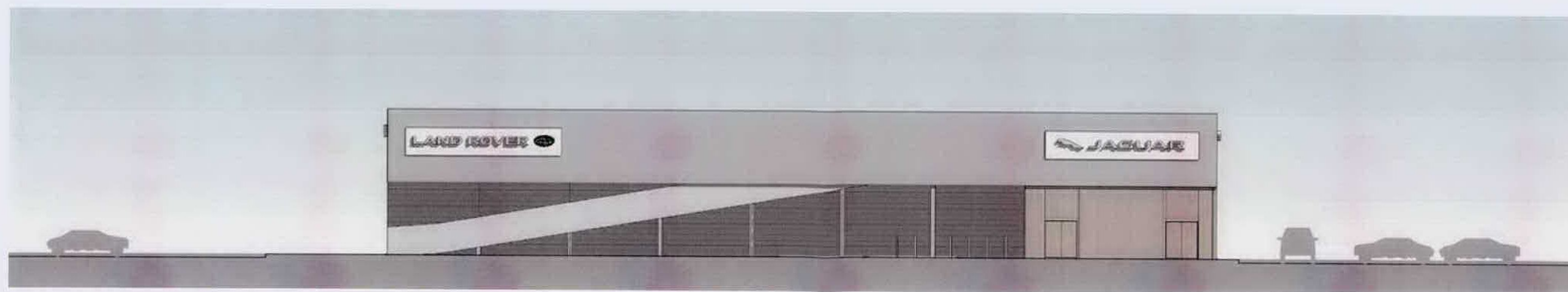
### 3. Design

Scale - Building Elevations

1:250 @ A3



Proposed North elevation- Context



Proposed East elevation- Context