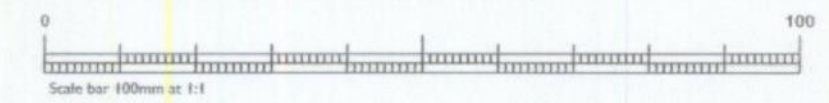


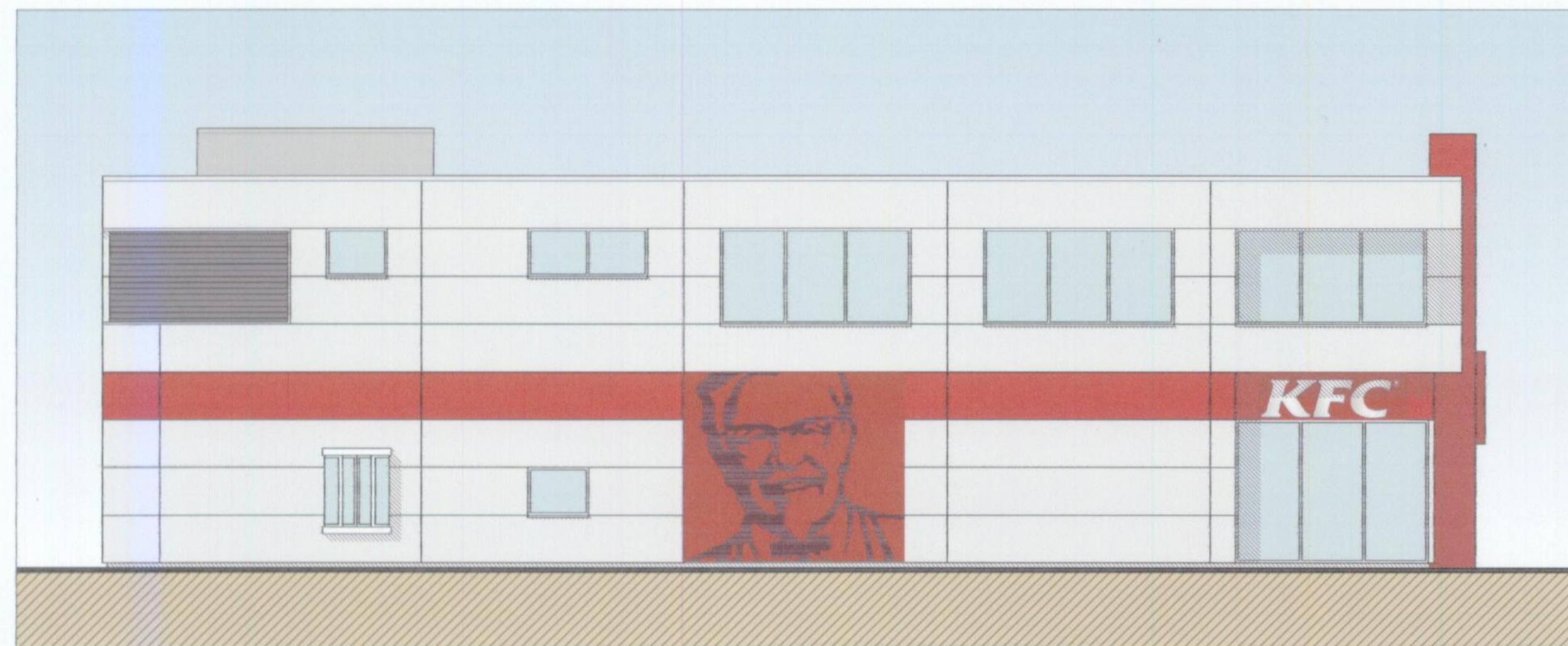
This drawing to be read in accordance with the specification/Bills of Materials and related drawings.

No Dimensions to be scaled from this drawing. All stated dimensions to be verified on site and the Architect notified of any discrepancies.



MATERIALS SCHEDULE

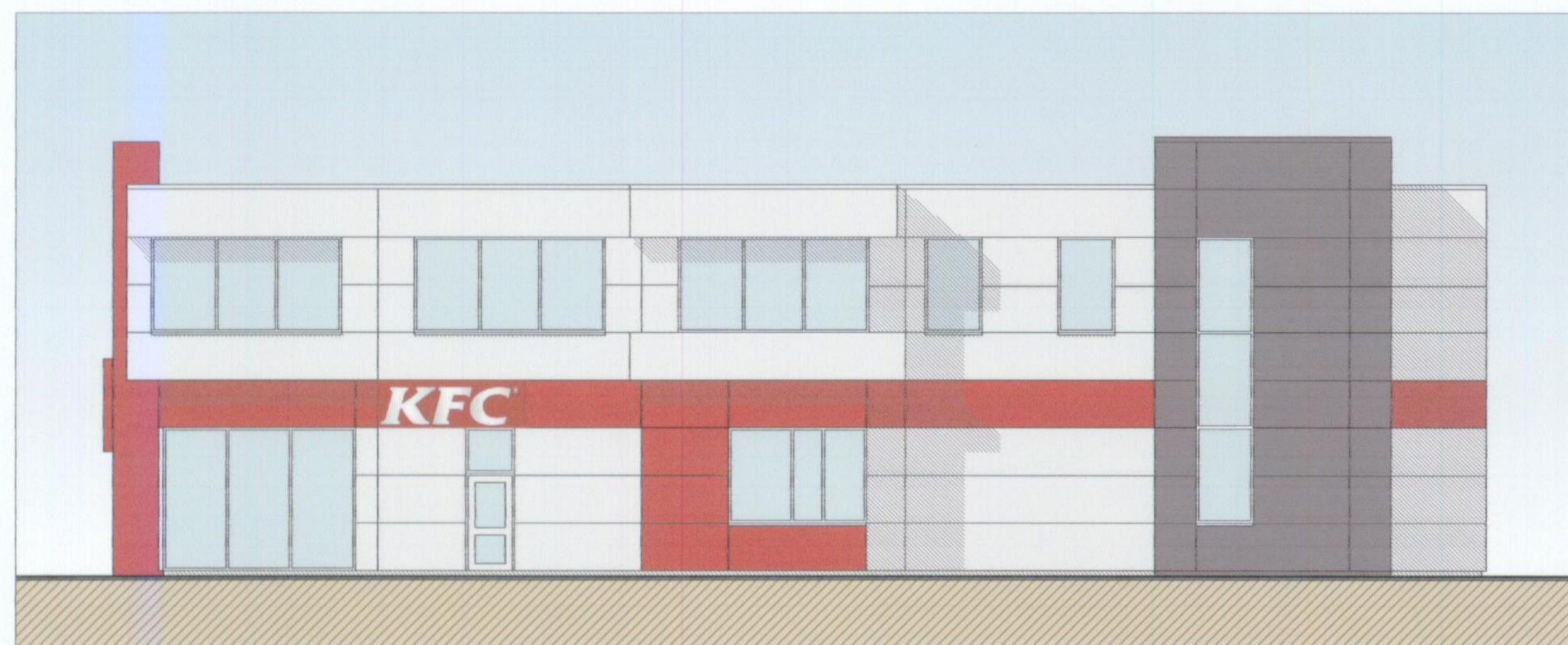
- WALLS:** LIGHT GREY COMPOSITE METAL CLADDING WITH RED CLADDING HIGHLIGHTS AND DARK GREY CLADDING TO LIFTSHAFT
- ROOF:** TROCAL OR SIMILAR LIGHT GREY SINGLE PLY MEMBRANE
- WINDOWS:** LIGHT GREY POWDER-COATED ALUMINIUM FRAMES
- DOORS:** GLAZED ENTRANCE DOORS WITH BRONZE ANODISED ALUMINIUM FRAMES
- BOUNDARY:** TIMBER POST AND RAIL FENCE AT LOW LEVEL
- VEHICLE ACCESS AND HARD-STANDING:** ASPHALT FOR ACCESS ROAD AND PARKING, CONCRETE FOR SERVICE AREA AND PRINTED CONCRETE FOR DRIVE-THRU
- LIGHTING:** EXTERNAL LIGHTING DETAILS TO BE CONFIRMED



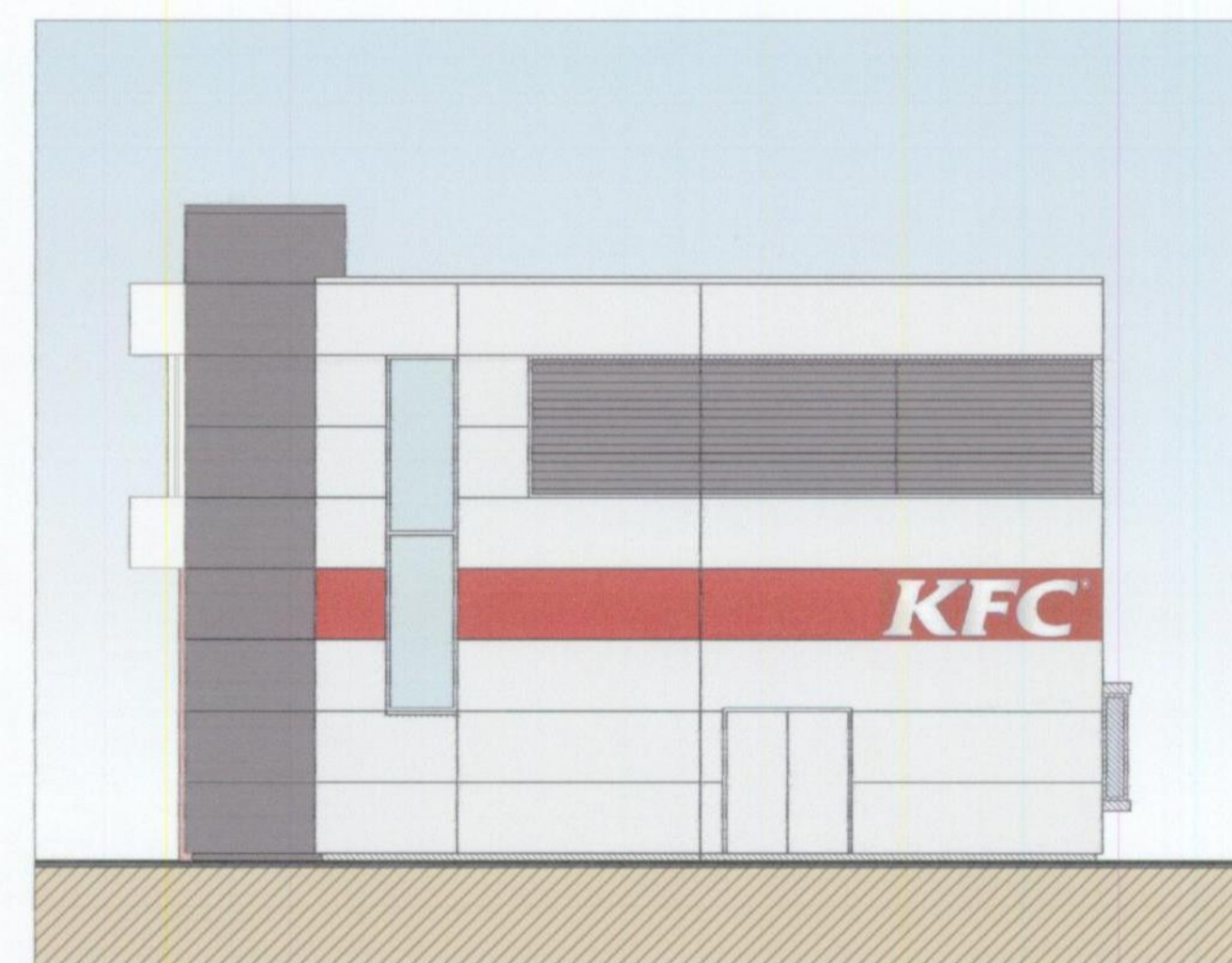
EAST ELEVATION



NORTH ELEVATION



WEST ELEVATION



SOUTH ELEVATION

| REV | DATE | NOTE | DMH |
|-----|----------|---------------------|-----|
| B | 29.02.12 | FLOOR PLANS REMOVED | DMH |
| A | 10.02.12 | MINOR AMENDMENTS | DMH |

Project

ROCHFORD BUSINESS PARK
CHERRY ORCHARD WAY
ROCHFORD

Title
PROPOSED KFC DRIVE-THRU RESTAURANT AND OFFICES. ELEVATIONS

Scale: 1:100 @A1 Date: FEB 12
 Drawn: DMH Checked:

Drawing Number: **6455/ P03** Revision: **B**

Saunders Partnership Architects
 Studio Four
 27 Broadwater Road
 Welwyn Garden City
 Hertfordshire, AL7 3AX

T 01707 385000
 F 0870 6222135
 www.saunderspartnership.co.uk
 offices at Welwyn Garden City | Bristol | Manchester

