



Our Ref: MO/713/NE

8<sup>th</sup> September 2006

Mr M. Stranks  
Rochford District Council  
Council Offices  
Rochford  
Essex SS4 1BW

Dear Mr Stranks,

***DEVELOPMENT AT ROCHE CLOSE, ROCHFORD***

I write in respect of the above and in particular condition 3 of the approval. I have today submitted Monocouche Render samples for your approval.

Please note the proposed colours as indicated on the elevation drawings for both blocks A and C are as follows:

1. White
2. Azure Blue
3. Sage Green
4. Rose Amber
5. Parchment

I trust the samples meet with your approval, however, I would welcome your formal approval at your earliest convenience.

In addition to the above, I can also confirm that we have sourced a supplier for the ventilation louver grilles on Block A and the colours proposed are as follows:

1. Where a Westley Red is used, RAL colour 8004
2. Where a Lavenham Cream is used, RAL colour 1002.

I trust you also find these acceptable.

Yours sincerely

**Matt Oates**  
**Technical Manager**

cc Mr. A. Butcher - Bidwells

Barratt Eastern Counties  
6-8 Richmond Road • Chelmsford • Essex CM2 6UA  
Tel: (01245) 232200 • Fax: (01245) 232277 • Sales Hotline (01245) 232222  
Oakleaf Property Line: (01245) 232223 • DX: 89718 Chelmsford 2



**weber**  
building solutions

# One coat renders

## Introduction

### ▲ weber one coat renders

Traditionally, render has meant the application of a variety of different cement and sand mixes, usually over a period of time, which are usually followed by two coats of masonry paint. A lack of investment by the industry in training has meant that in recent years many of the principles involved in the mixing and application process have either been ignored or misunderstood, frequently leading to disappointing results.

**weber** one coat renders remove many of the potential causes of failure and transform the use and application of render for the designer. One coat renders are factory produced from quality raw materials to formulate correctly proportioned mixes. These make application easier, increase adhesion and



provide durability along with the benefits of low maintenance and increased design opportunities.

All **weber** one coat renders are through coloured, cementitious materials designed to be applied in accordance with BS5262, the Code of practice for External renderings.

Material can often be applied and finished in the same day (or at worst the next day), leading to much reduced programme times, offering cost savings in reduced scaffold times, offering cost savings in scaffold hire and consequently quick release of areas near to the building for ground works and landscaping.

These through coloured renders provide a range of finishes and are considered low maintenance products which do not require painting. Depending upon local atmospheric conditions, future maintenance is usually limited to periodic

cleaning with detergent and low-pressure washing.

**weber** Monocouche renders are available in an ever expanding range of colours and enable facades with distinctive 'Ashlar' features to be constructed. Designers are, in effect, presented with a blank canvas upon which modern or period designs, that accurately replicate distinctive stonework, can easily be reproduced without recourse to any involved and expensive 'specials'. Such details add tremendously to kerbside attraction.

Innovative developments from **weber** have resulted in one coat render options suitable for use with External Wall Insulation Systems. The new generation system **weber.therm XP** is based around one coat, through colour, machine applied materials that offer the same reliability and time saving features previously only available for direct applied renders.

**weber** has a policy of working with recommended applicators for the application of these products.

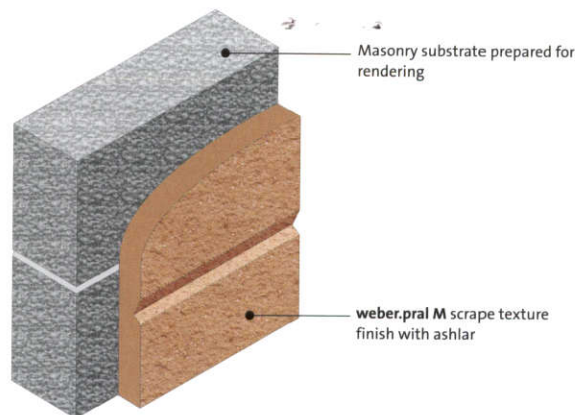




# Monocouche renders

## ▲ weber.pral M

**weber.pral M** is designed to take full advantage of the short application programmes enabled by modern one coat renders and machine application. Subject to weather conditions the material may be applied and scrape finished in the same day. Scrape finishes with through colour provide low maintenance options for designers wishing to provide variety in the projects in which they are involved. Ashlar features may be incorporated. A spray roughcast finish is also available when the product is applied by render spray machine.



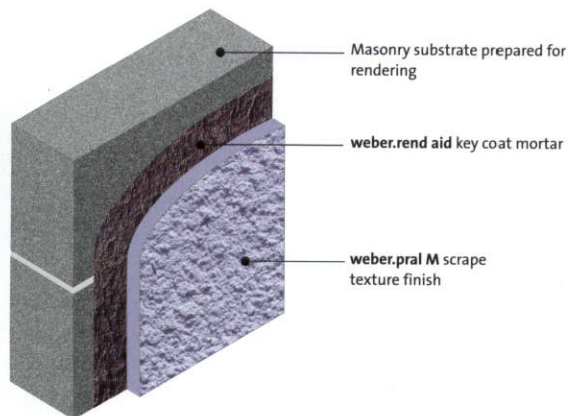
## ▲ weber.pral MF

**weber.pral MF** is a through coloured Monocouche render that has all the features of **weber.pral M** but with a finer scraped finish on completion.

## ▲ weber.pral H

**weber.pral H** is a hand applied Monocouche render suitable for application on buildings where smaller areas of substrate are required to be covered. It is normally scrape finished in a texture similar to the weathered stone finish of **weber.pral M**. **weber.pral H** is available in four colours that compliment and contrast with natural building materials, making it an extremely sympathetic product to use regardless of the environment or location of the building.

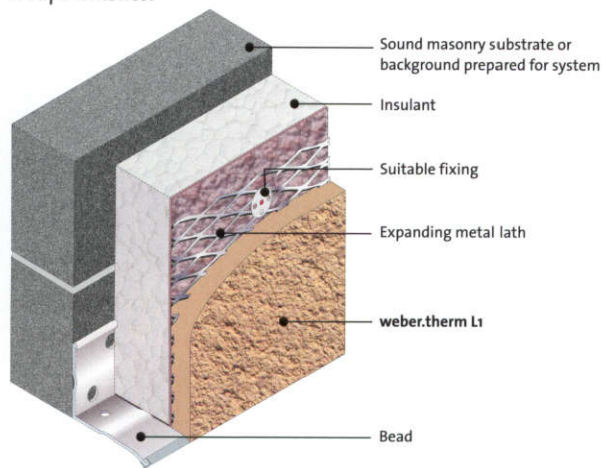
**weber.pral H** is designed for application to suitably prepared medium dense concrete blockwork or brick.



# weber.therm XP External Wall Insulation Systems

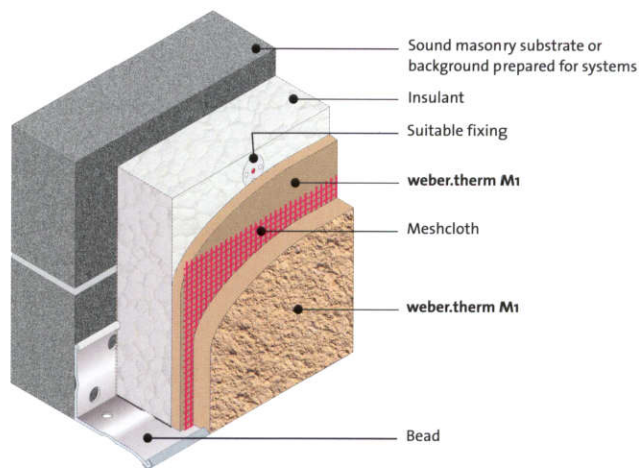
## ▲ weber.therm L1

**weber.therm L1** is a hand or machine applied, through coloured render designed to be used as part of the **weber.therm XP** system when specified with a metal lath carrier. This variant of the system is particularly suited to high rise applications and for areas where high impact resistance is required. Scraped, spray roughcast and dry-dash finishes are available. Light 'Ashlar' features may be incorporated in scrape finishes.



**Note:** While every effort is made to ensure colour consistency, the samples in this presenter are made under controlled laboratory conditions. Material applied on site can differ from the presenter due to the effect of suction in the substrate, scraping time and weather conditions. Where colour is critical we would recommend that a site sample is applied by the chosen applicator for the project and approved before commencement of the contract.

Due to differences in formulation and raw materials used, colour matching between the different products this presenter illustrates may not be absolute.



## ▲ weber.therm M1

**weber.therm M1** is a hand or machine applied, through coloured render designed to be used as part of the **weber.therm XP** system when specified with a mesh cloth. Scraped, spray roughcast and dry-dash finishes are available. Light 'Ashlar' features may be incorporated in scrape finishes.

## Technical Services

**weber** offer a full range of support services from specification writing, sample provision, on-site services and dedicated technical advice lines, etc. For initial technical and sales support call direct on 01525 722110.



**weber**  
building solutions